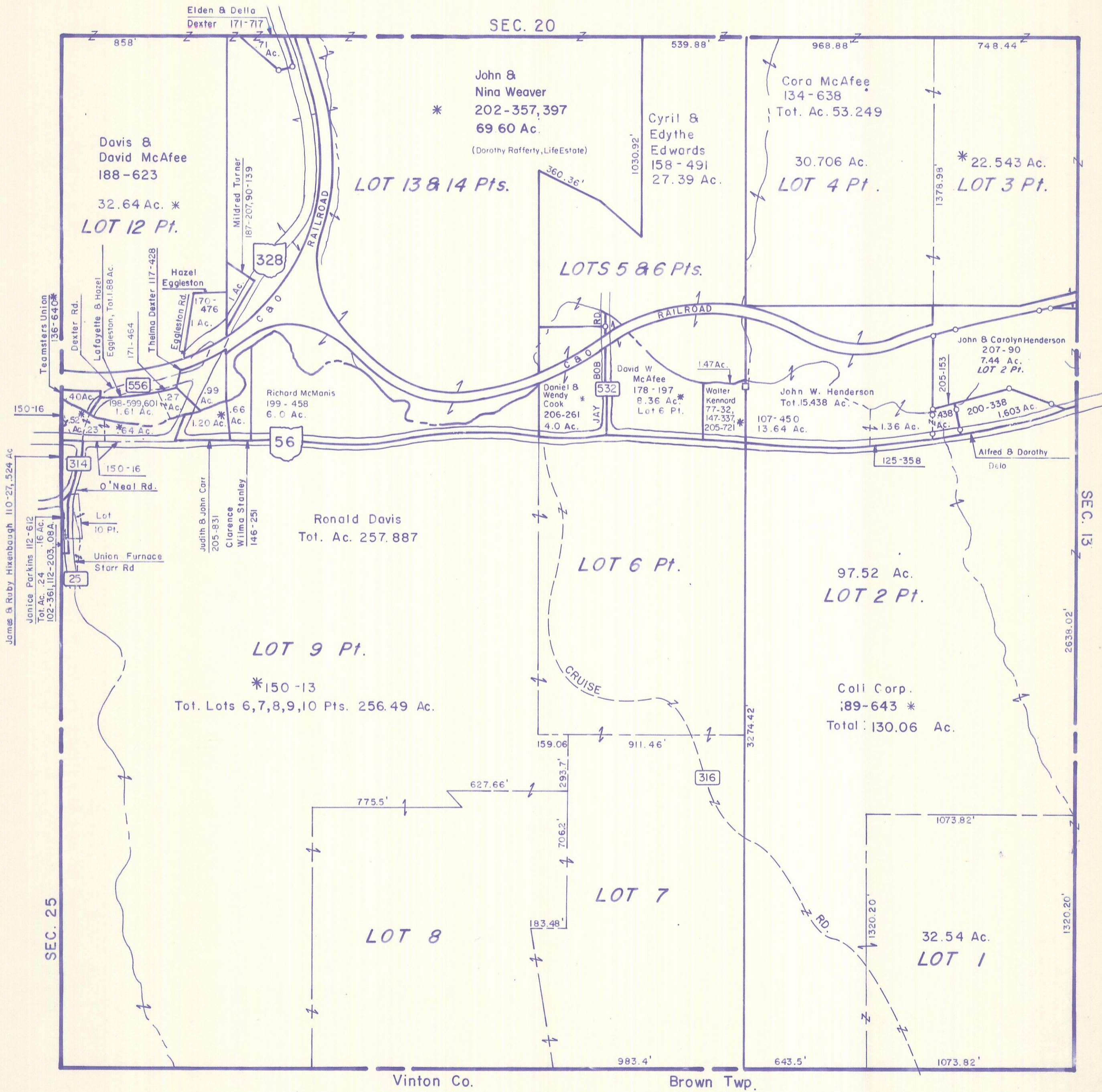


HOCKING COUNTY

Sec.19 T12 R16

STARR TWP.

Scale 1" = 400'



SEC. 20

John & Nina Weaver
* 202-357,397
69.60 Ac.
(Dorothy Rafferty, Life Estate)

Davis & David McAfee
188-623
32.64 Ac. *
LOT 12 Pt.

Cyril & Edythe Edwards
158-491
27.39 Ac.

Cora McAfee
134-638
Tot. Ac. 53.249
30.706 Ac.
LOT 4 Pt.

* 22.543 Ac.
LOT 3 Pt.

LOTS 5 & 6 Pts.

Ronald Davis
Tot. Ac. 257.887

LOT 9 Pt.

* 150-13
Tot. Lots 6,7,8,9,10 Pts. 256.49 Ac.

LOT 6 Pt.

97.52 Ac.
LOT 2 Pt.

Coli Corp.
89-643 *
Total: 130.06 Ac.

LOT 7

LOT 8

32.54 Ac.
LOT 1

Vinton Co.

Brown Twp.

SEC. 19