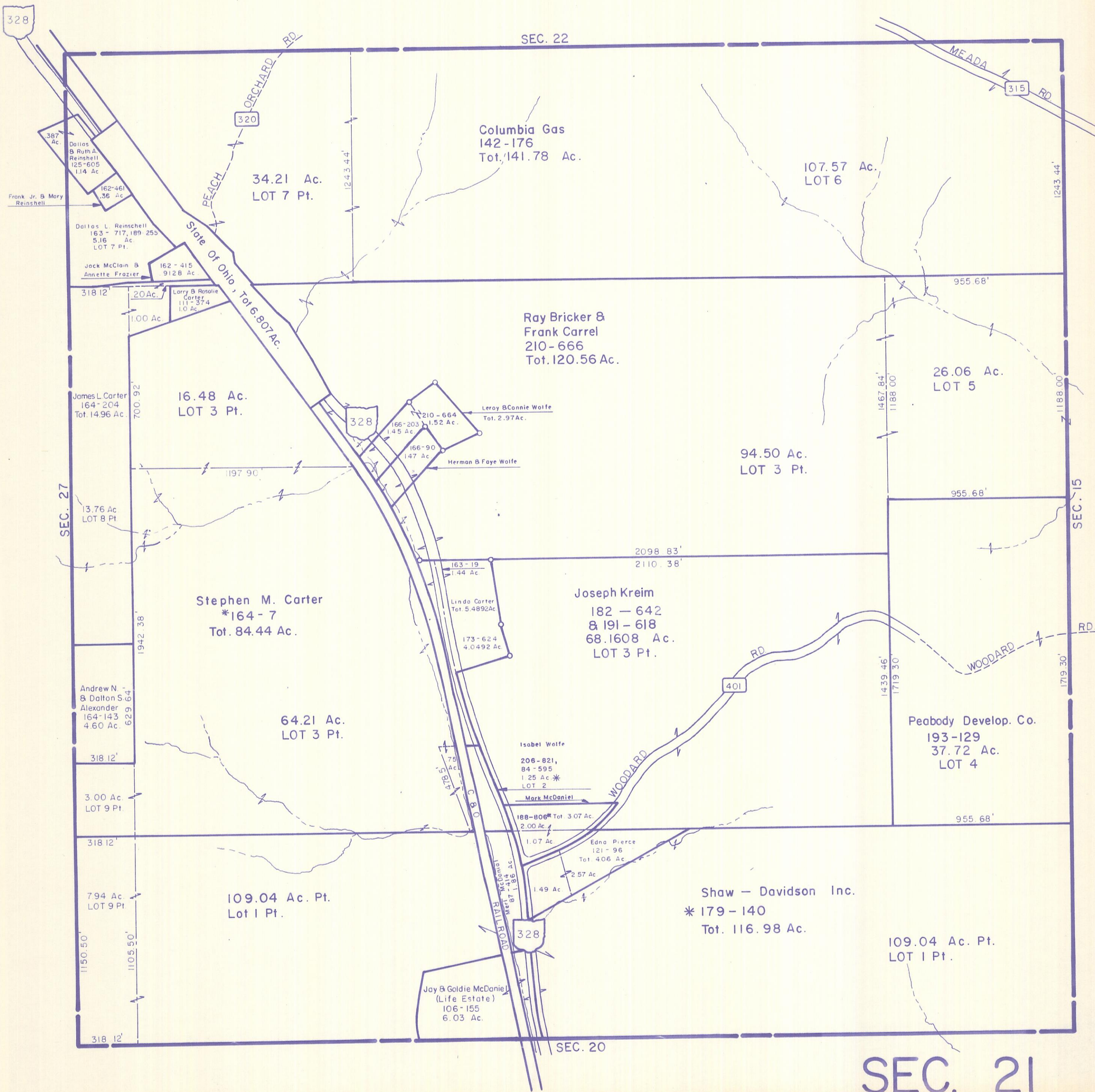


HOCKING COUNTY

STARR TWP.

SEC. 21 T12 R16

Scale 1" = 400'



328

SEC. 22

MEADA RD
315

Columbia Gas
142-176
Tot. 141.78 Ac.

107.57 Ac.
LOT 6

34.21 Ac.
LOT 7 Pt.

387 Ac.
Dallas & Ruth A. Reinschell
125-605
1.14 Ac.
Frank Jr. & Mary Reinschell

Dallas L. Reinschell
163-717, 189-255
5.16 Ac.
LOT 7 Pt.

Jack McClain & Annette Frazier
162-415
9128 Ac.

Larry & Rosalie Carter
111-374
1.0 Ac.

Ray Bricker & Frank Carrel
210-666
Tot. 120.56 Ac.

26.06 Ac.
LOT 5

16.48 Ac.
LOT 3 Pt.

Leroy & Connie Wolfe
210-664
Tot. 2.97 Ac.

94.50 Ac.
LOT 3 Pt.

Herman & Faye Wolfe
166-90
147 Ac.

James L. Carter
164-204
Tot. 14.96 Ac.

13.76 Ac.
LOT 8 Pt.

Stephen M. Carter
*164-7
Tot. 84.44 Ac.

Joseph Kreim
182-642
& 191-618
68.1608 Ac.
LOT 3 Pt.

Linda Carter
Tot. 5.4892 Ac.
173-624
4.0492 Ac.

Andrew N. & Dalton S. Alexander
164-143
4.60 Ac.

64.21 Ac.
LOT 3 Pt.

Peabody Develop. Co.
193-129
37.72 Ac.
LOT 4

Isabel Wolfe
206-821,
84-595
1.25 Ac. *
LOT 2

Mark McDaniel
188-806
Tot. 3.07 Ac.
2.00 Ac.

3.00 Ac.
LOT 9 Pt.

Edna Pierce
121-96
Tot. 4.06 Ac.

7.94 Ac.
LOT 9 Pt.

109.04 Ac. Pt.
Lot 1 Pt.

Shaw - Davidson Inc.
*179-140
Tot. 116.98 Ac.

109.04 Ac. Pt.
LOT 1 Pt.

Jay & Goldie McDaniel
(Life Estate)
106-155
6.03 Ac.

SEC. 20

SEC. 21