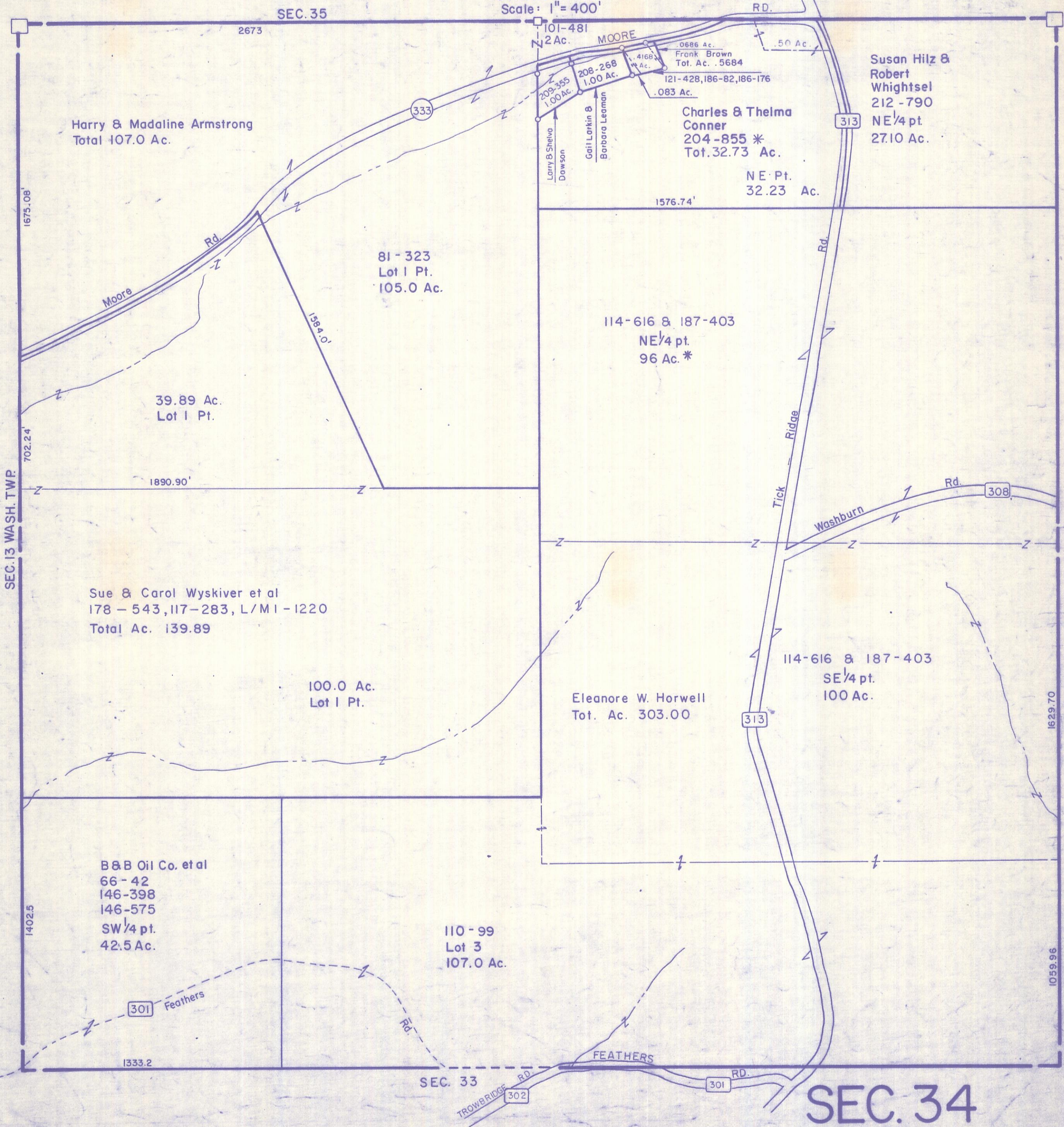


HOCKING COUNTY

Sec. 34 T 12 R 16

STARR TWP.

Scale: 1" = 400'



Harry & Madaline Armstrong
Total 107.0 Ac.

39.89 Ac.
Lot 1 Pt.

Sue & Carol Wyskiver et al
178 - 543, 117-283, L/M1-1220
Total Ac. 139.89

100.0 Ac.
Lot 1 Pt.

B&B Oil Co. et al
66-42
146-398
146-575
SW 1/4 pt.
42.5 Ac.

110-99
Lot 3
107.0 Ac.

Eleanore W. Horwell
Tot. Ac. 303.00

114-616 & 187-403
SE 1/4 pt.
100 Ac.

81-323
Lot 1 Pt.
105.0 Ac.

114-616 & 187-403
NE 1/4 pt.
96 Ac. *

Charles & Thelma
Conner
204-855 *
Tot. 32.73 Ac.

NE Pt.
32.23 Ac.

Susan Hilz &
Robert
Whightsel
212-790
NE 1/4 pt.
27.10 Ac.

Frank Brown
Tot. Ac. .5684

MOORE

101-481
2 Ac.

Larry B. Shelva
Dawson

Gail Larkin &
Barbara Leaman

209-355
1.00 Ac.

208-268
1.00 Ac.

.4168
Ac.

.0686 Ac.

121-428, 186-82, 186-176
.083 Ac.

RD.

333

313

308

313

301

302

301

SEC. 34

SEC. 13 WASH. TWP.

SEC. 28

SEC. 33

1675.08'

702.24'

1402.5'

1333.2

2673

1890.90'

1584.0'

1576.74'

1629.70

1059.96