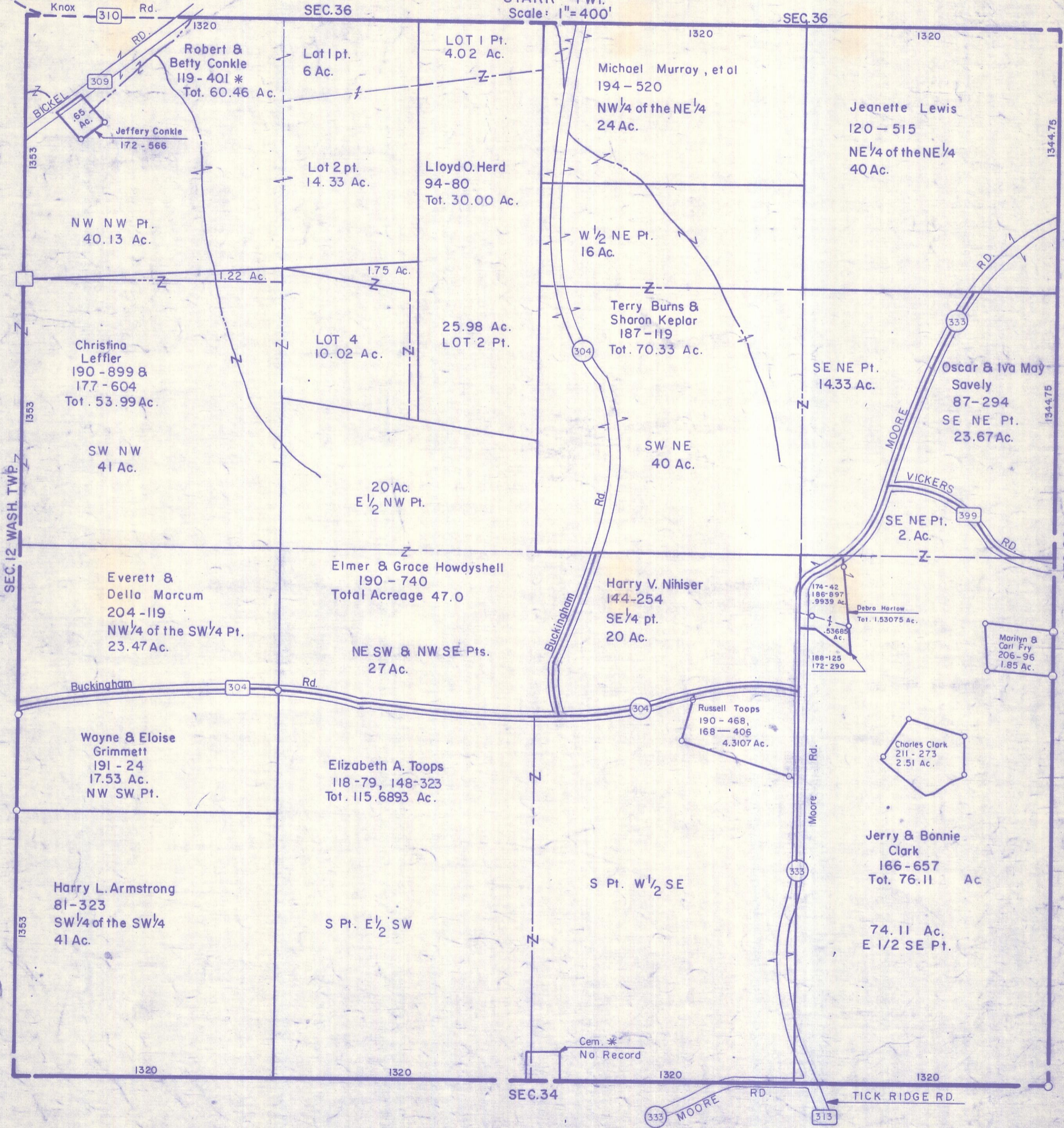


HOCKING COUNTY

Sec. 35 T 12 R 16

STARR TWP

Scale: 1" = 400'



Knox Rd. 310

1353

SEC. 36

SEC. 36

1353

SEC. 12 WASH. TWP.

1353

1353

Robert & Betty Conkle  
119-401 \*  
Tot. 60.46 Ac.

Lot 1 pt.  
6 Ac.

LOT 1 Pt.  
4.02 Ac.

Michael Murray, et al  
194-520  
NW 1/4 of the NE 1/4  
24 Ac.

Jeanette Lewis  
120-515  
NE 1/4 of the NE 1/4  
40 Ac.

NW NW Pt.  
40.13 Ac.

Lot 2 pt.  
14.33 Ac.

Lloyd O. Herd  
94-80  
Tot. 30.00 Ac.

W 1/2 NE Pt.  
16 Ac.

Terry Burns & Sharon Keplar  
187-119  
Tot. 70.33 Ac.

SE NE Pt.  
14.33 Ac.

Oscar & Iva May Savely  
87-294  
SE NE Pt.  
23.67 Ac.

Christina Leffler  
190-899 & 177-604  
Tot. 53.99 Ac.

LOT 4  
10.02 Ac.

25.98 Ac.  
LOT 2 Pt.

SW NE  
40 Ac.

SW NW  
41 Ac.

20 Ac.  
E 1/2 NW Pt.

Everett & Della Marcum  
204-119  
NW 1/4 of the SW 1/4 Pt.  
23.47 Ac.

Elmer & Grace Howdyshell  
190-740  
Total Acreage 47.0

Harry V. Nihiser  
144-254  
SE 1/4 pt.  
20 Ac.

NE SW & NW SE Pts.  
27 Ac.

Debra Harlow  
174-42, 186-897, .9939 Ac.  
Tot. 1.53075 ac.

Marilyn & Carl Fry  
206-96  
1.85 Ac.

Buckingham Rd. 304

Wayne & Eloise Grimmitt  
191-24  
17.53 Ac.  
NW SW Pt.

Elizabeth A. Toops  
118-79, 148-323  
Tot. 115.6893 Ac.

Russell Toops  
190-468, 168-406  
4.3107 Ac.

Charles Clark  
211-273  
2.51 Ac.

Harry L. Armstrong  
81-323  
SW 1/4 of the SW 1/4  
41 Ac.

S Pt. E 1/2 SW

S Pt. W 1/2 SE

Jerry & Bonnie Clark  
166-657  
Tot. 76.11 Ac.

74.11 Ac.  
E 1/2 SE Pt.

Cem. \*  
No Record

SEC. 34

TICK RIDGE RD.

SEC. 35