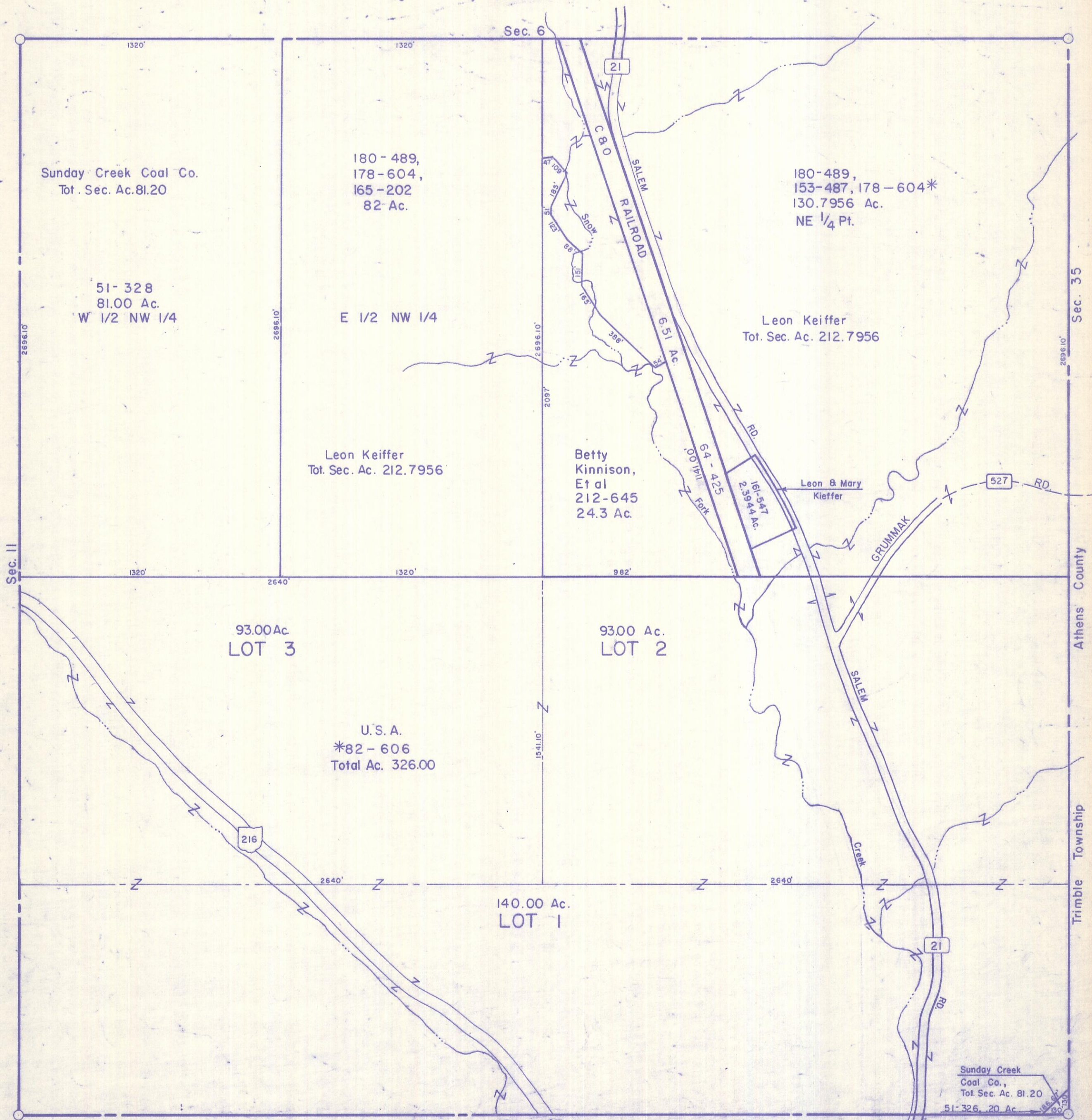


HOCKING COUNTY

Sec. 5. T13 R15

WARD TWP.  
Scale 1" = 400'



Sunday Creek Coal Co.  
Tot. Sec. Ac. 81.20

180-489,  
178-604,  
165-202  
82 Ac.

180-489,  
153-487, 178-604\*  
130.7956 Ac.  
NE 1/4 Pt.

51-328  
81.00 Ac.  
W 1/2 NW 1/4

E 1/2 NW 1/4

Leon Keiffer  
Tot. Sec. Ac. 212.7956

Leon Keiffer  
Tot. Sec. Ac. 212.7956

Betty  
Kinnison,  
Et al  
212-645  
24.3 Ac.

Leon & Mary  
Kieffer

93.00 Ac.  
LOT 3

93.00 Ac.  
LOT 2

U.S.A.  
\*82-606  
Total Ac. 326.00

140.00 Ac.  
LOT 1

Sunday Creek  
Coal Co.,  
Tot. Sec. Ac. 81.20

51-326, 20 Ac.

Sec. 5