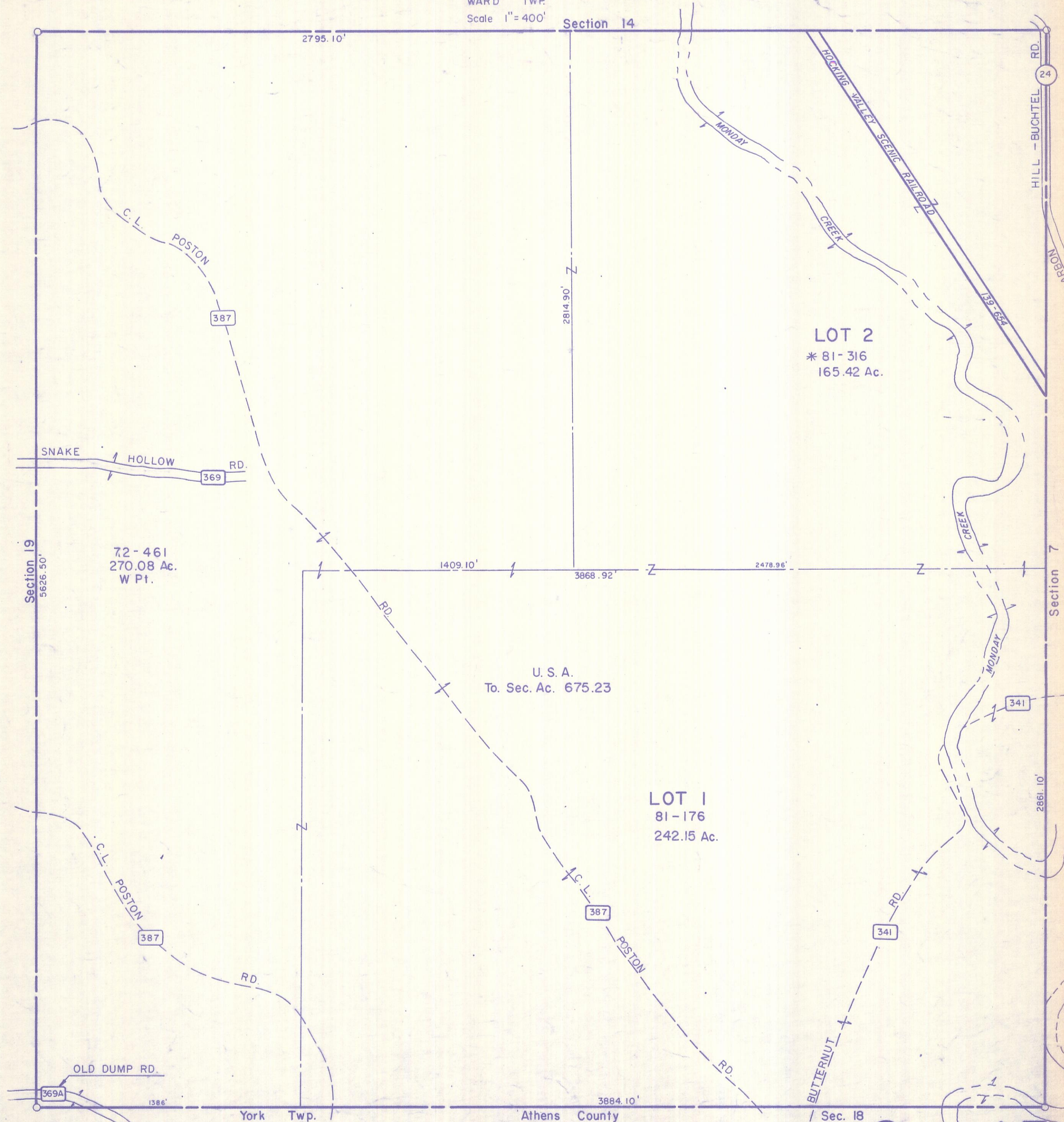


HOCKING COUNTY

Sec. 13 T13 R15

WARD TWP.

Scale 1" = 400'



LOT 2
* 81-316
165.42 Ac.

72-461
270.08 Ac.
W Pt.

U.S.A.
To Sec. Ac. 675.23

LOT 1
81-176
242.15 Ac.

Sec. 13