

HOCKING COUNTY

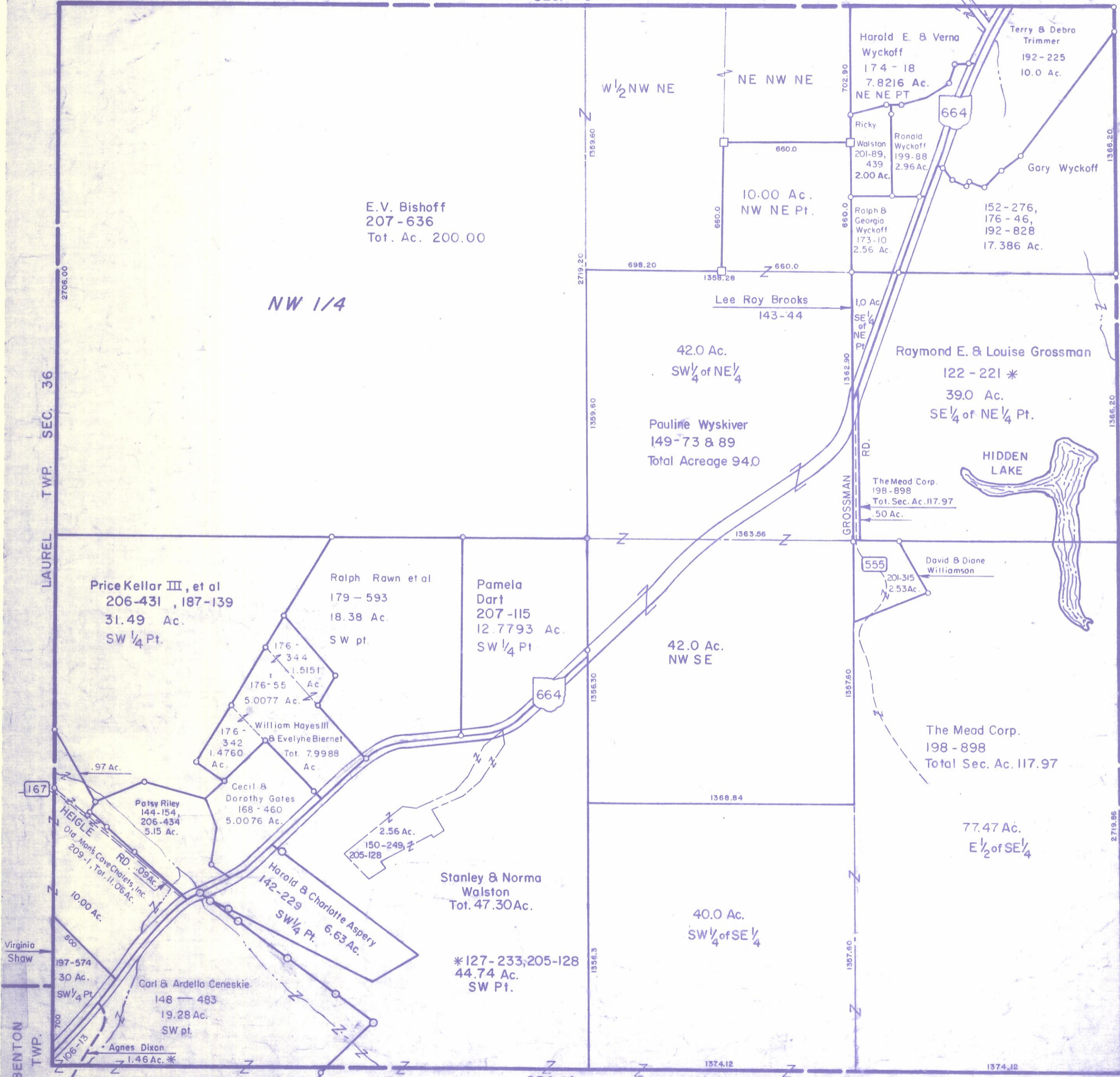
Sec. 7 T13 R17

WASHINGTON TWP.

Scale 1"=400'

SEC. 6

BLACKJACK ROAD



E.V. Bischoff
207-636
Tot. Ac. 200.00

NW 1/4

42.0 Ac.
SW 1/4 of NE 1/4

Pauline Wyskiver
149-73 & 89
Total Acreage 94.0

Raymond E. & Louise Grossman
122-221 *
39.0 Ac.
SE 1/4 of NE 1/4 Pt.

HIDDEN LAKE

The Mead Corp.
198-898
Tot. Sec. Ac. 117.97
50 Ac.

David & Diane Williamson
201-315
2.53 Ac.

The Mead Corp.
198-898
Total Sec. Ac. 117.97

77.47 Ac.
E 1/2 of SE 1/4

Price Kellar III, et al
206-431, 187-139
31.49 Ac.
SW 1/4 Pt.

Ralph Rawn et al
179-593
18.38 Ac.
SW pt.

Pamela Dart
207-115
12.7793 Ac.
SW 1/4 Pt.

42.0 Ac.
NW SE

Stanley & Norma Walston
Tot. 47.30 Ac.

*127-233, 205-128
44.74 Ac.
SW Pt.

William Hayes III
& Evelyne Biernet
Tot. 7.9988 Ac.

Cecil & Dorothy Gates
168-460
5.0076 Ac.

Patsy Riley
144-154, 206-434
5.15 Ac.

Carl & Ardella Ceneskie
148-483
19.28 Ac.
SW pt.

Agnes Dixon
106-13
1.46 Ac. *

SEC. 7