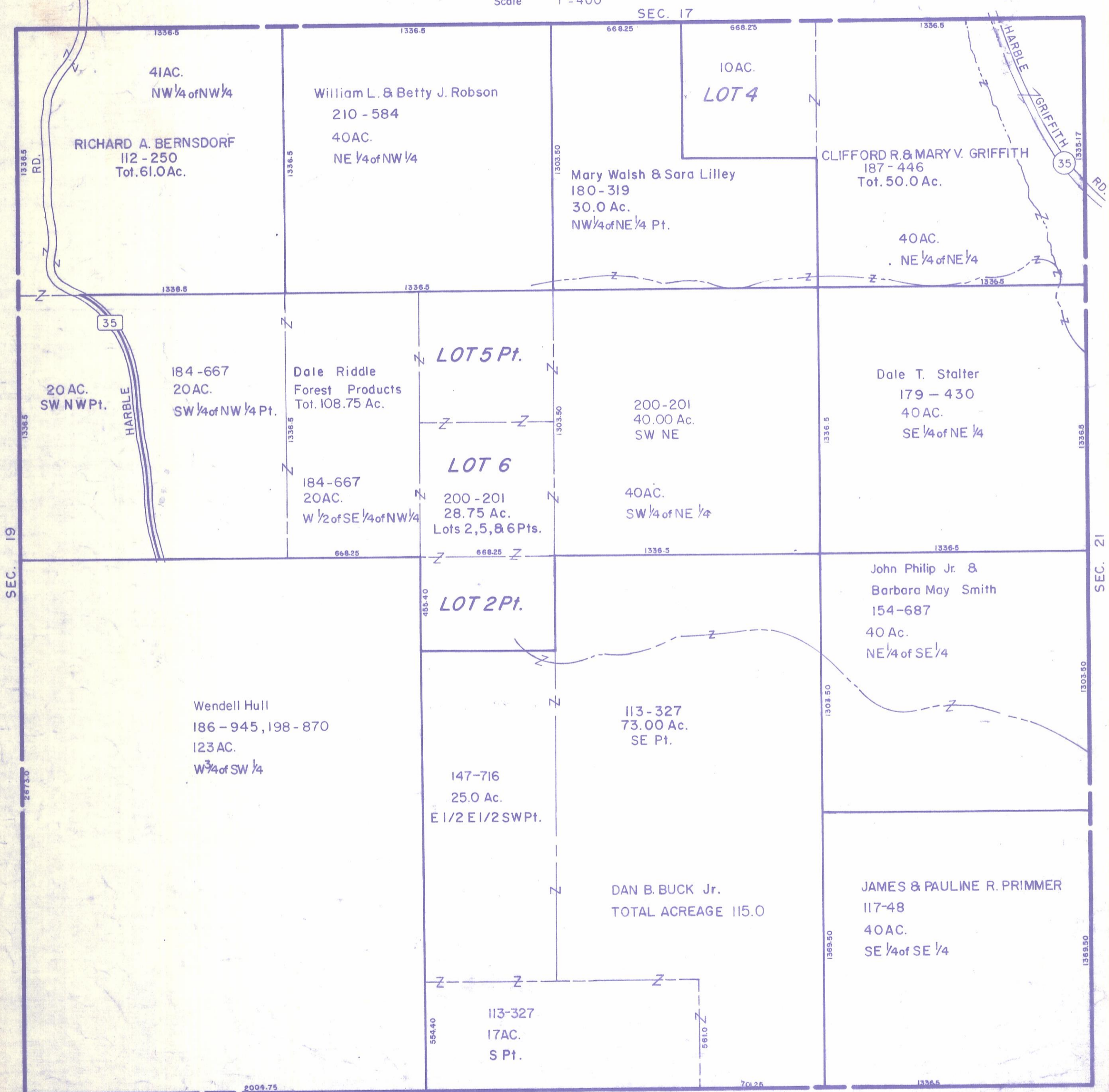


HOCKING COUNTY

SEC. 20 T13 R17

WASHINGTON TWP.

Scale 1" = 400'



41AC.  
NW 1/4 of NW 1/4

RICHARD A. BERNSDORF  
112 - 250  
Tot. 61.0 Ac.

William L. & Betty J. Robson  
210 - 584  
40AC.  
NE 1/4 of NW 1/4

10AC.  
**LOT 4**

Mary Walsh & Sara Lilley  
180 - 319  
30.0 Ac.  
NW 1/4 of NE 1/4 Pt.

CLIFFORD R. & MARY V. GRIFFITH  
187 - 446  
Tot. 50.0 Ac.

40AC.  
NE 1/4 of NE 1/4

20 AC.  
SW NW Pt.

184 - 667  
20AC.  
SW 1/4 of NW 1/4 Pt.

Dale Riddle  
Forest Products  
Tot. 108.75 Ac.

**LOT 5 Pt.**

200 - 201  
40.00 Ac.  
SW NE

Dale T. Stalter  
179 - 430  
40AC.  
SE 1/4 of NE 1/4

**LOT 6**

184 - 667  
20AC.  
W 1/2 of SE 1/4 of NW 1/4

200 - 201  
28.75 Ac.  
Lots 2, 5, & 6 Pts.

40AC.  
SW 1/4 of NE 1/4

**LOT 2 Pt.**

John Philip Jr. &  
Barbara May Smith  
154 - 687  
40 Ac.  
NE 1/4 of SE 1/4

Wendell Hull  
186 - 945, 198 - 870  
123 AC.  
W 3/4 of SW 1/4

113 - 327  
73.00 Ac.  
SE Pt.

147 - 716  
25.0 Ac.  
E 1/2 E 1/2 SW Pt.

DAN B. BUCK Jr.  
TOTAL ACREAGE 115.0

JAMES & PAULINE R. PRIMMER  
117 - 48  
40AC.  
SE 1/4 of SE 1/4

113 - 327  
17AC.  
S Pt.

SEC. 20