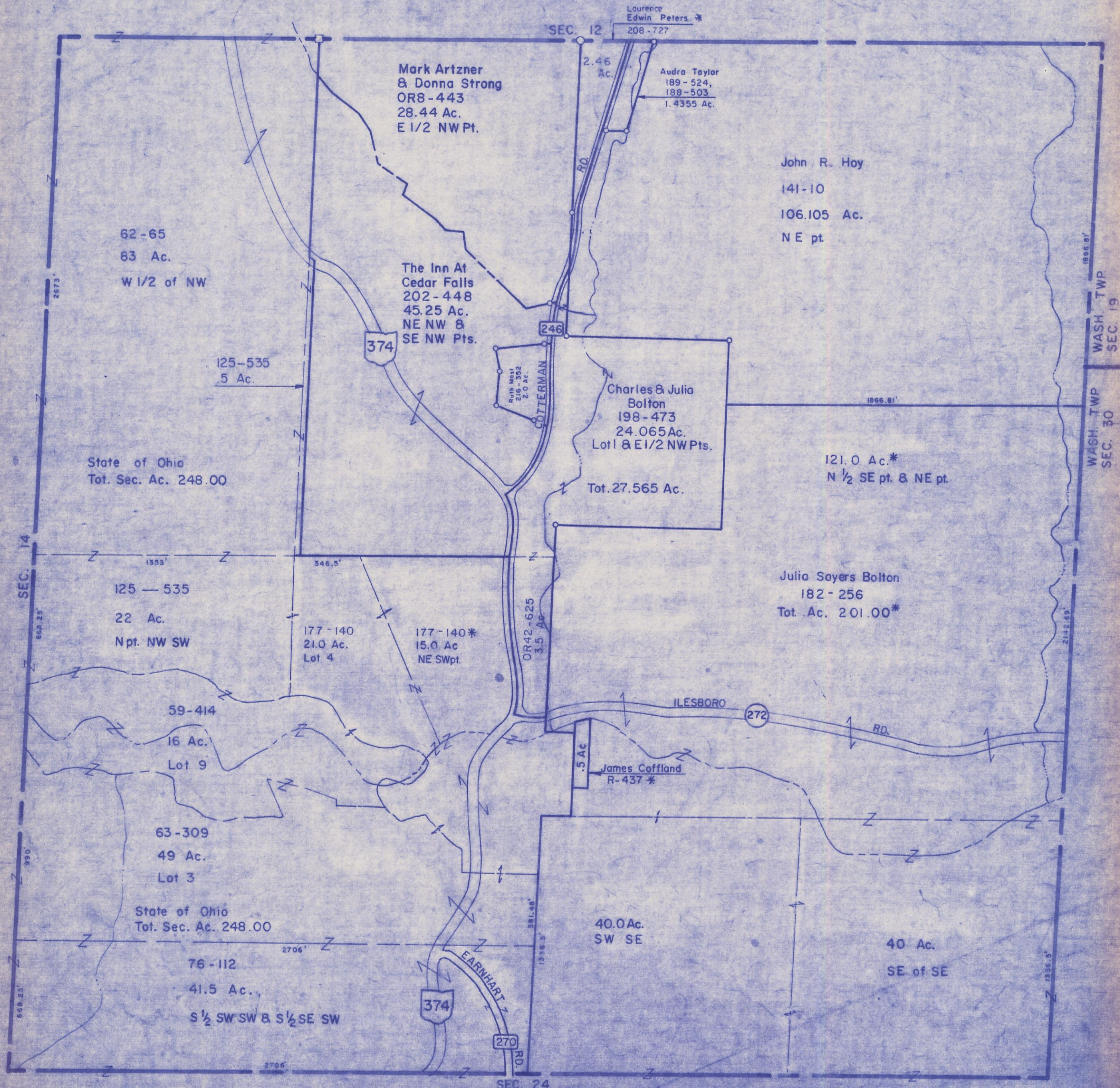


HOCKING COUNTY

Sec. 13 T11 R18

BENTON TWP

Scale: 1"=400'



62-65
83 Ac.
W 1/2 of NW

State of Ohio
Tot. Sec. Ac. 248.00

125-535
22 Ac.
Npt. NW SW

59-414
16 Ac.
Lot 9

63-309
49 Ac.
Lot 3

State of Ohio
Tot. Sec. Ac. 248.00

76-112
41.5 Ac.,
S 1/2 SW SW & S 1/2 SE SW

Mark Artzner
& Donna Strong
OR8-443
28.44 Ac.
E 1/2 NW Pt.

The Inn At
Cedar Falls
202-448
45.25 Ac.
NE NW &
SE NW Pts.

Ruth Moss
216-352
2.0 Ac.

177-140*
15.0 Ac
NE SWpt.

177-140
21.0 Ac.
Lot 4

SEC. 12
Laurence
Edwin Peters *
208-727

2.46
Ac.

Audra Taylor
189-524,
188-503
1.4355 Ac.

John R. Hoy
141-10
106.105 Ac.
NE pt.

Charles & Julia
Bolton
198-473
24.065 Ac.
Lot 1 & E 1/2 NW Pts.

Tot. 27.565 Ac.

121.0 Ac.*
N 1/2 SE pt. & NE pt.

Julia Sayers Bolton
182-256
Tot. Ac. 201.00*

.5 Ac
James Coffland
R-437 *

40.0 Ac.
SW SE

40 Ac.
SE of SE

SEC. 13