

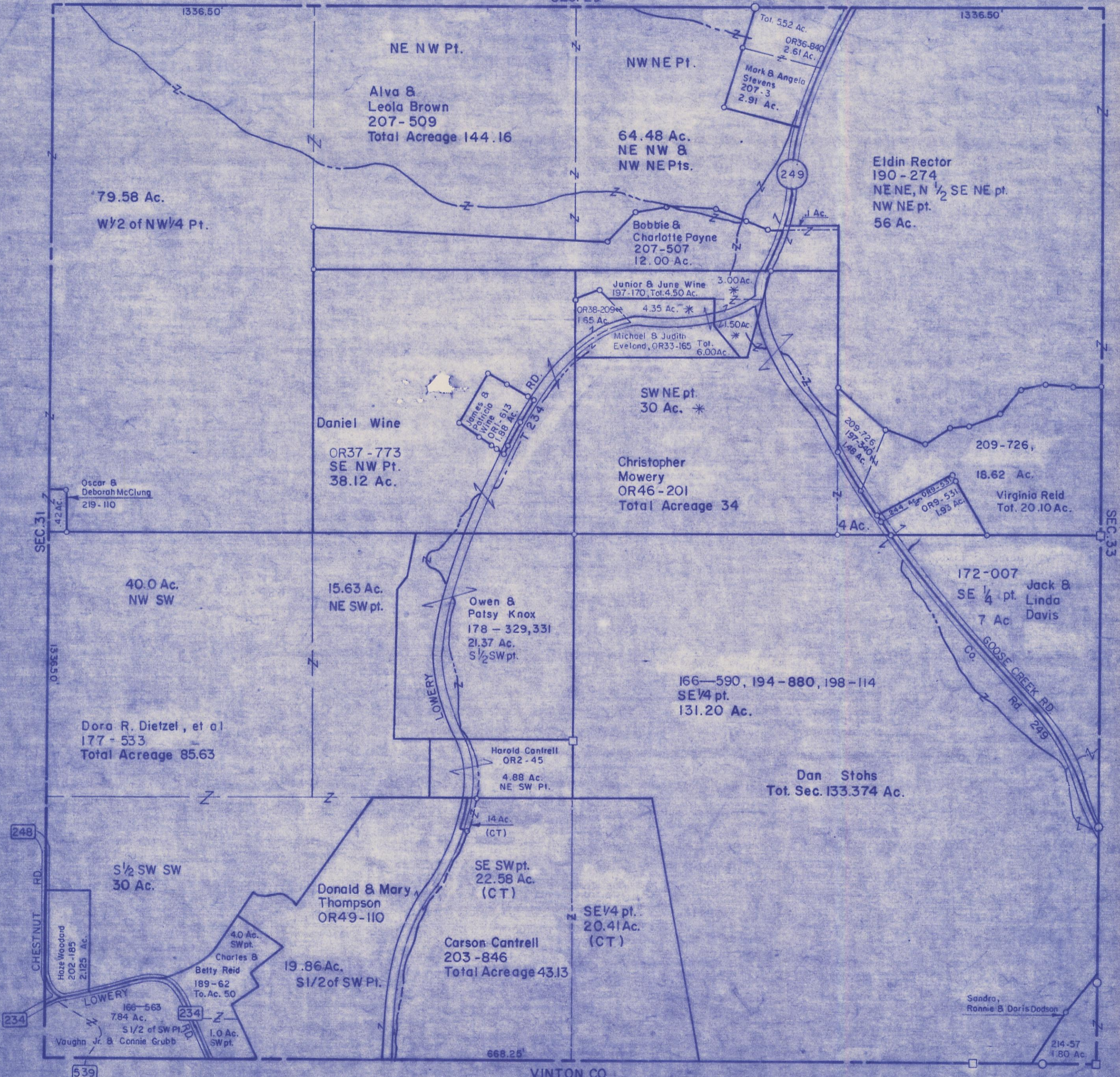
HOCKING COUNTY

Sec.32 T11 R18

BENTON TWP.

Scale: 1"=400'

SEC. 29



1336.50' 1336.50'

NE NW Pt.

NW NE Pt.

Alva & Leola Brown
207-509
Total Acreage 144.16

64.48 Ac.
NE NW & NW NE Pts.

Mark & Angela Stevens
207-3
2.91 Ac.

Eldin Rector
190-274
NE NE, N 1/2 SE NE pt.
NW NE pt.
56 Ac.

79.58 Ac.
W 1/2 of NW 1/4 Pt.

Bobbie & Charlotte Payne
207-507
12.00 Ac.

Junior & June Wine
197-170, Tot. 4.50 Ac.
3.00 Ac.

Michael & Judith Eveland, OR33-165
Tot. 6.00 Ac.

4.35 Ac. *

2.15 Ac. *

1.65 Ac.

SW NE pt.
30 Ac. *

Christopher Mowery
OR46-201
Total Acreage 34

James & Patricia Wine
OR1-813
1.88 Ac.

209-726,
197-340
1.48 Ac.

209-726,
18.62 Ac.

Virginia Reid
Tot. 20.10 Ac.

Oscar & Deborah McClung
219-110
.42 Ac.

40.0 Ac.
NW SW

15.63 Ac.
NE SW pt.

Owen & Patsy Knox
178-329, 331
21.37 Ac.
S 1/2 SW pt.

172-007
SE 1/4 pt.
7 Ac.

Jack & Linda Davis

166-590, 194-880, 198-114
SE 1/4 pt.
131.20 Ac.

Dora R. Dietzel, et al
177-533
Total Acreage 85.63

Harold Cantrell
OR2-45
4.88 Ac.
NE SW Pt.

14 Ac.
(CT)

SE SW pt.
22.58 Ac.
(CT)

Dan Stohs
Tot. Sec. 133.374 Ac.

1/2 SW SW
30 Ac.

Donald & Mary Thompson
OR49-110

Carson Cantrell
203-846
Total Acreage 43.13

SE 1/4 pt.
20.41 Ac.
(CT)

Haze Woodard
202-185
2.125 Ac.

4.0 Ac.
SW pt.

Charles B. Betty Reid
189-62
To. Ac. 50

19.86 Ac.
S 1/2 of SW Pt.

166-563
7.84 Ac.
S 1/2 of SW Pt.

1.0 Ac.
SW pt.

Vaughn Jr. & Connie Grubb

214-57
1.80 Ac.

Sandra, Ronnie & Doris Dodson

668.25'

VINTON CO.

SEC. 32