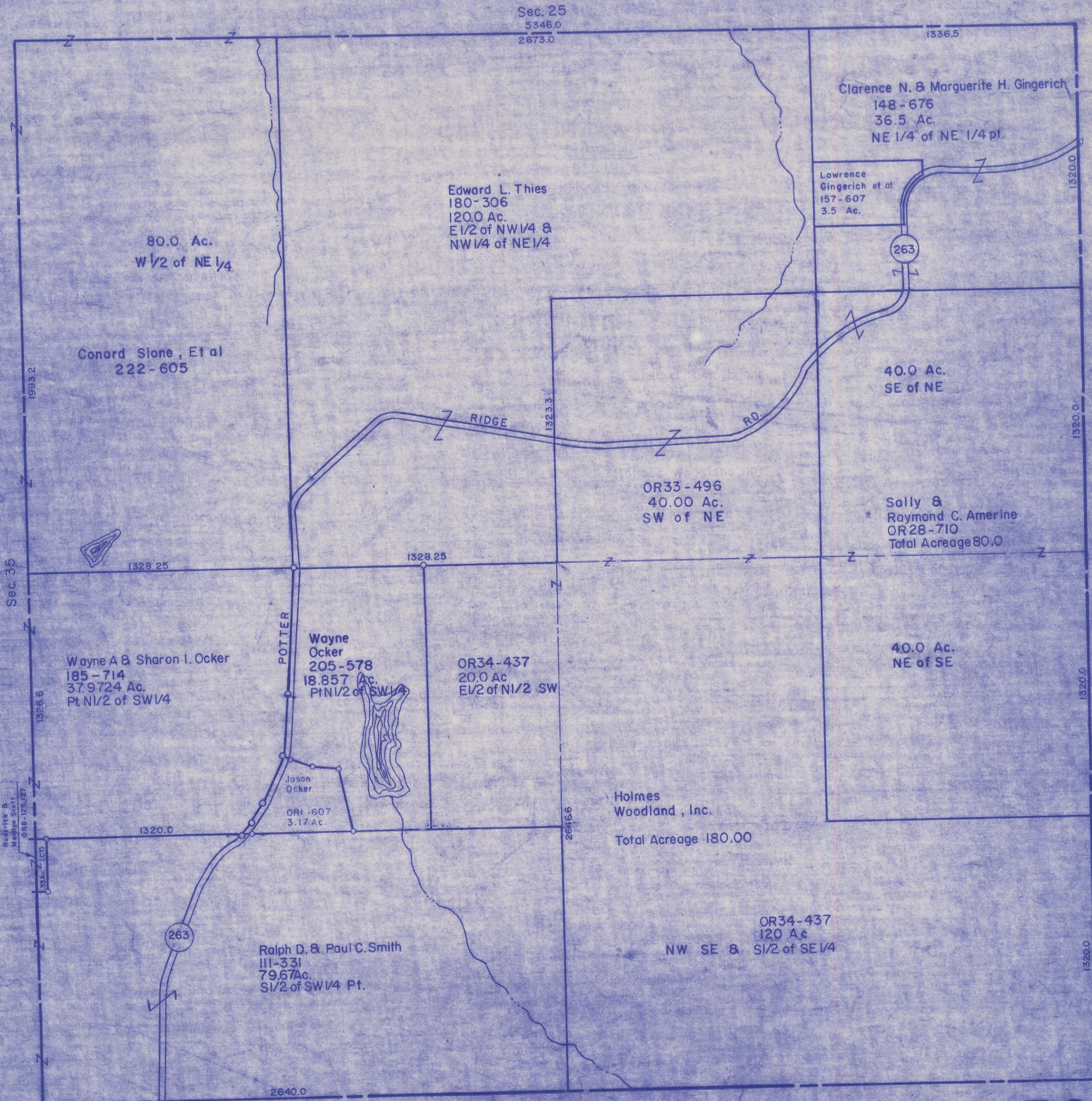


HOCKING COUNTY

Sec. 36 T11 R18

BENTON TWP.

Scale = 1" = 400'



Sec. 25  
5346.0  
2673.0

Clarence N. & Marguerite H. Gingerich  
148-676  
36.5 Ac.  
NE 1/4 of NE 1/4 pt.

Lawrence  
Gingerich et al.  
157-607  
3.5 Ac.

Edward L. Thies  
180-306  
120.0 Ac.  
E 1/2 of NW 1/4 &  
NW 1/4 of NE 1/4

80.0 Ac.  
W 1/2 of NE 1/4

Conard Slone, Et al  
222-605

40.0 Ac.  
SE of NE

OR33-496  
40.00 Ac.  
SW of NE

Sally &  
Raymond C. Amerine  
OR28-710  
Total Acreage 80.0

40.0 Ac.  
NE of SE

Wayne A & Sharon I. Ocker  
185-714  
37.9724 Ac.  
Pt. NE 1/2 of SW 1/4

Wayne  
Ocker  
205-578  
18.857 Ac.  
Pt. NE 1/2 of SW 1/4

OR34-437  
20.0 Ac  
E 1/2 of NE 1/2 SW

Jason  
Ocker  
OR1-607  
3.17 Ac.

Holmes  
Woodland, Inc.  
Total Acreage 180.00

Ralph D. & Paul C. Smith  
111-331  
79.67 Ac.  
S 1/2 of SW 1/4 Pt.

OR34-437  
120 Ac  
NW SE & S 1/2 of SE 1/4

Sec. 35  
1993.2  
1328.25  
1326.6

Roderick B.  
Marilyn Scott  
OR8-125,127  
39A-C-1CT

1320.0  
2640.0

1323.3  
1328.25  
2646.6

1336.5  
1320.0  
1320.0  
1320.0  
1320.0

Vinton County

Vinton County

Sec. 36