

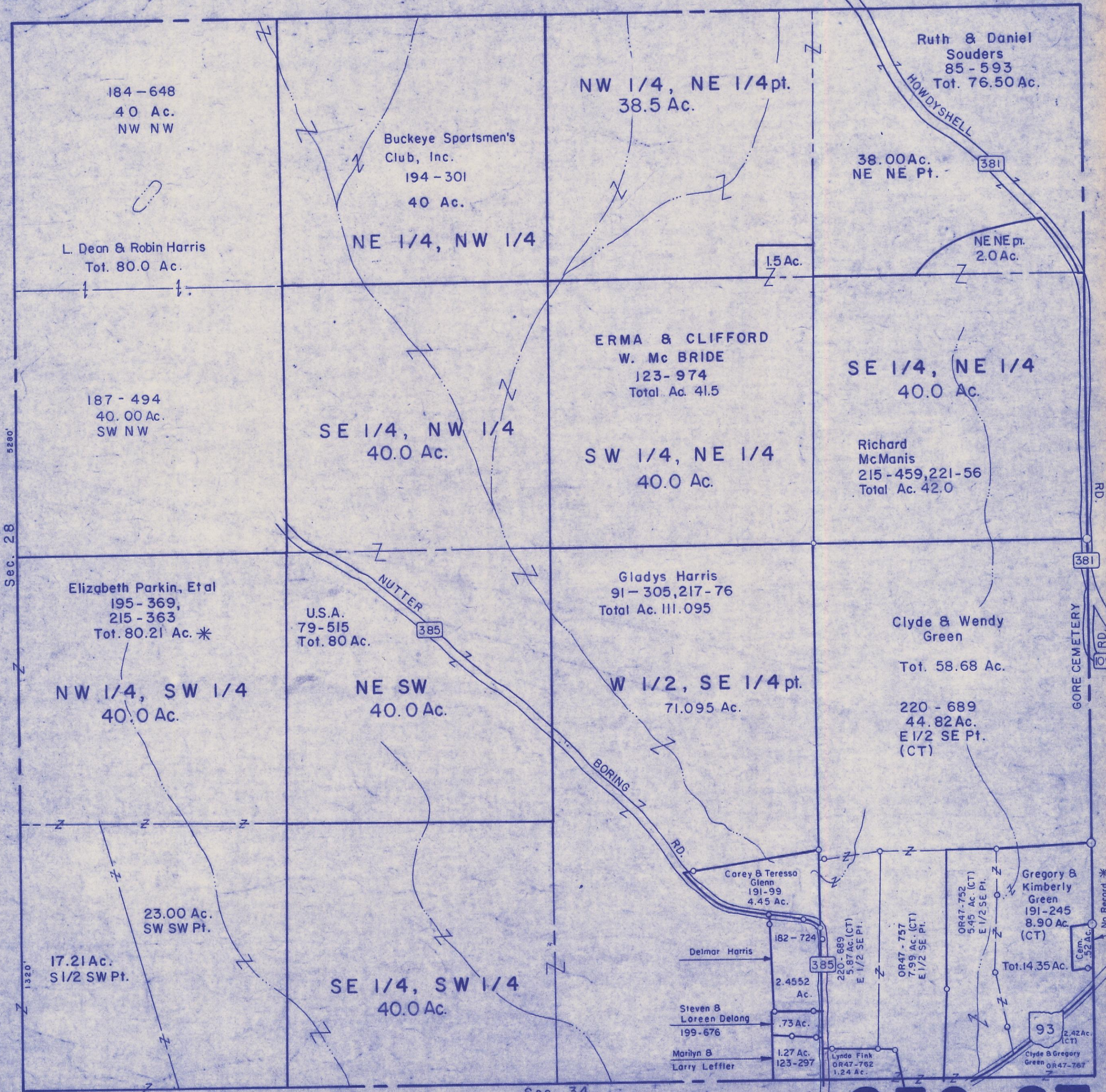
HOCKING COUNTY

Sec. 27 T14N R16W

FALLS GORE TWP.

Scale 1"=400'

Perry County



184-648
40 Ac.
NW NW

L. Dean & Robin Harris
Tot. 80.0 Ac.

187-494
40.00 Ac.
SW NW

Elizabeth Parkin, Et al
195-369,
215-363
Tot. 80.21 Ac. *

NW 1/4, SW 1/4
40.0 Ac.

23.00 Ac.
SW SW Pt.

17.21 Ac.
S 1/2 SW Pt.

NE 1/4, NW 1/4

SE 1/4, NW 1/4
40.0 Ac.

U.S.A.
79-515
Tot. 80 Ac.

NE SW
40.0 Ac.

SE 1/4, SW 1/4
40.0 Ac.

NW 1/4, NE 1/4 pt.
38.5 Ac.

Buckeye Sportsmen's
Club, Inc.
194-301
40 Ac.

ERMA & CLIFFORD
W. Mc BRIDE
123-974
Total Ac. 41.5

SW 1/4, NE 1/4
40.0 Ac.

Gladys Harris
91-305, 217-76
Total Ac. 111.095

W 1/2, SE 1/4 pt.
71.095 Ac.

Carey & Teressa
Glenn
191-99
4.45 Ac.

Delmar Harris
182-724
2.4552
Ac.

Steven &
Loreen Delong
199-676
.73 Ac.

Marilyn &
Larry Leffler
1.27 Ac.
123-297

38.00 Ac.
NE NE Pt.

Ruth & Daniel
Souders
85-593
Tot. 76.50 Ac.

NE NE pt.
2.0 Ac.

SE 1/4, NE 1/4
40.0 Ac.

Richard
McManis
215-459, 221-56
Total Ac. 42.0

Clyde & Wendy
Green

Tot. 58.68 Ac.

220-689
44.82 Ac.
E 1/2 SE Pt.
(CT)

Gregory &
Kimberly
Green
191-245
8.90 Ac.
(CT)

Tot. 14.35 Ac.

93
2.42 Ac.
(CT)

Clyde & Gregory
Green
OR47-767

SEC. 27

5290'

Sec. 28

1320'

Sec. 34