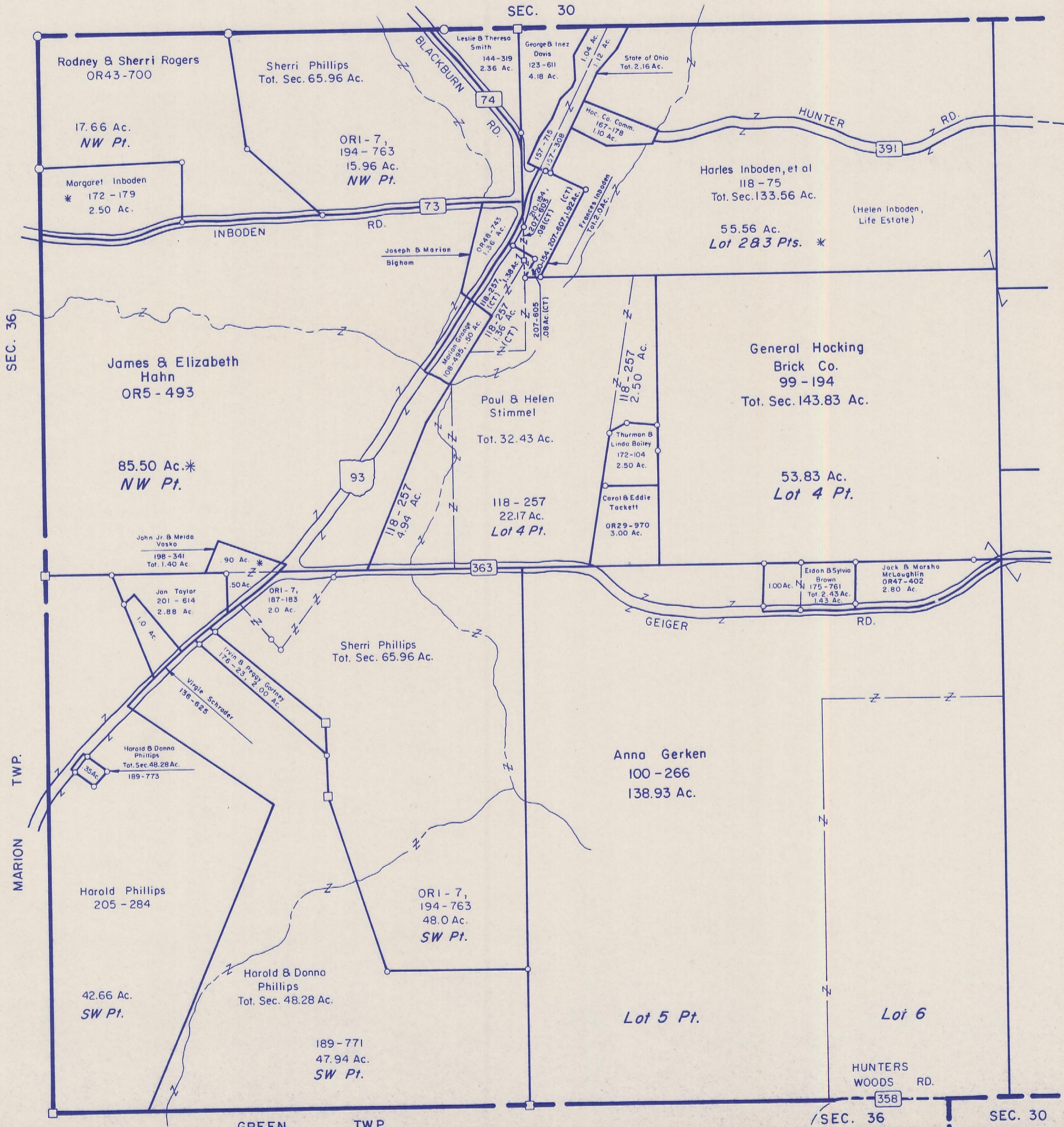


HOCKING COUNTY

FALLS GORE TWP.

W Pt. SEC. 31 T14 R16

Scale 1" = 400'



Rodney & Sherri Rogers
OR43-700

Sherri Phillips
Tot. Sec. 65.96 Ac.

17.66 Ac.
NW Pt.

Margaret Inboden
* 172-179
2.50 Ac.

ORI-7,
194-763
15.96 Ac.
NW Pt.

Leslie B Theresa
Smith
144-319
2.36 Ac.

George B Inez
Davis
123-611
4.18 Ac.

State of Ohio
Tot. 2.16 Ac.

Hoc. Co. Comm.
167-178
1.10 Ac.

Harles Inboden, et al
118-75
Tot. Sec. 133.56 Ac.

(Helen Inboden,
Life Estate)

55.56 Ac.
Lot 2 & 3 Pts. *

SEC. 36

James & Elizabeth
Hahn
OR5-493

85.50 Ac.*
NW Pt.

Joseph B Marian
Bigham

Or 43-743
1.36 Ac.

Marion George
108-498, .50 Ac.

118-257
1.36 Ac.

118-257
1.36 Ac.

118-257
1.36 Ac.

118-257
1.36 Ac.

118-257
1.36 Ac.

118-257
1.36 Ac.

118-257
1.36 Ac.

118-257
1.36 Ac.

118-257
1.36 Ac.

118-257
1.36 Ac.

118-257
1.36 Ac.

118-257
1.36 Ac.

118-257
1.36 Ac.

118-257
1.36 Ac.

118-257
1.36 Ac.

118-257
1.36 Ac.

118-257
1.36 Ac.

118-257
1.36 Ac.

118-257
1.36 Ac.

118-257
1.36 Ac.

118-257
1.36 Ac.

118-257
1.36 Ac.

General Hocking
Brick Co.
99-194
Tot. Sec. 143.83 Ac.

53.83 Ac.
Lot 4 Pt.

John Jr. & Melba
Vosko
198-341
Tot. 1.40 Ac.

Jan Taylor
201-614
2.88 Ac.

ORI-7,
187-183
2.0 Ac.

Irvin & Peggy Gorney
176-257, 2.00 Ac.

Virgie Schrader
136-625

Harold & Donna
Phillips
Tot. Sec. 48.28 Ac.
189-773

MARION
TWP.

Harold Phillips
205-284

42.66 Ac.
SW Pt.

Harold & Donna
Phillips
Tot. Sec. 48.28 Ac.

189-771
47.94 Ac.
SW Pt.

ORI-7,
194-763
48.0 Ac.
SW Pt.

Anna Gerken
100-266
138.93 Ac.

Lot 5 Pt.

Eldon & Sylvia
Brown
175-761
Tot. 2.43 Ac.
1.43 Ac.

Jack & Marsha
McLaughlin
OR47-402
2.80 Ac.

MARION
TWP.

MARION
TWP.

MARION
TWP.

MARION
TWP.

MARION
TWP.

MARION
TWP.

MARION
TWP.

MARION
TWP.

MARION
TWP.

MARION
TWP.

MARION
TWP.

MARION
TWP.

MARION
TWP.

GREEN
TWP.

SEC. 36

SEC. 30

W Pt. SEC. 31