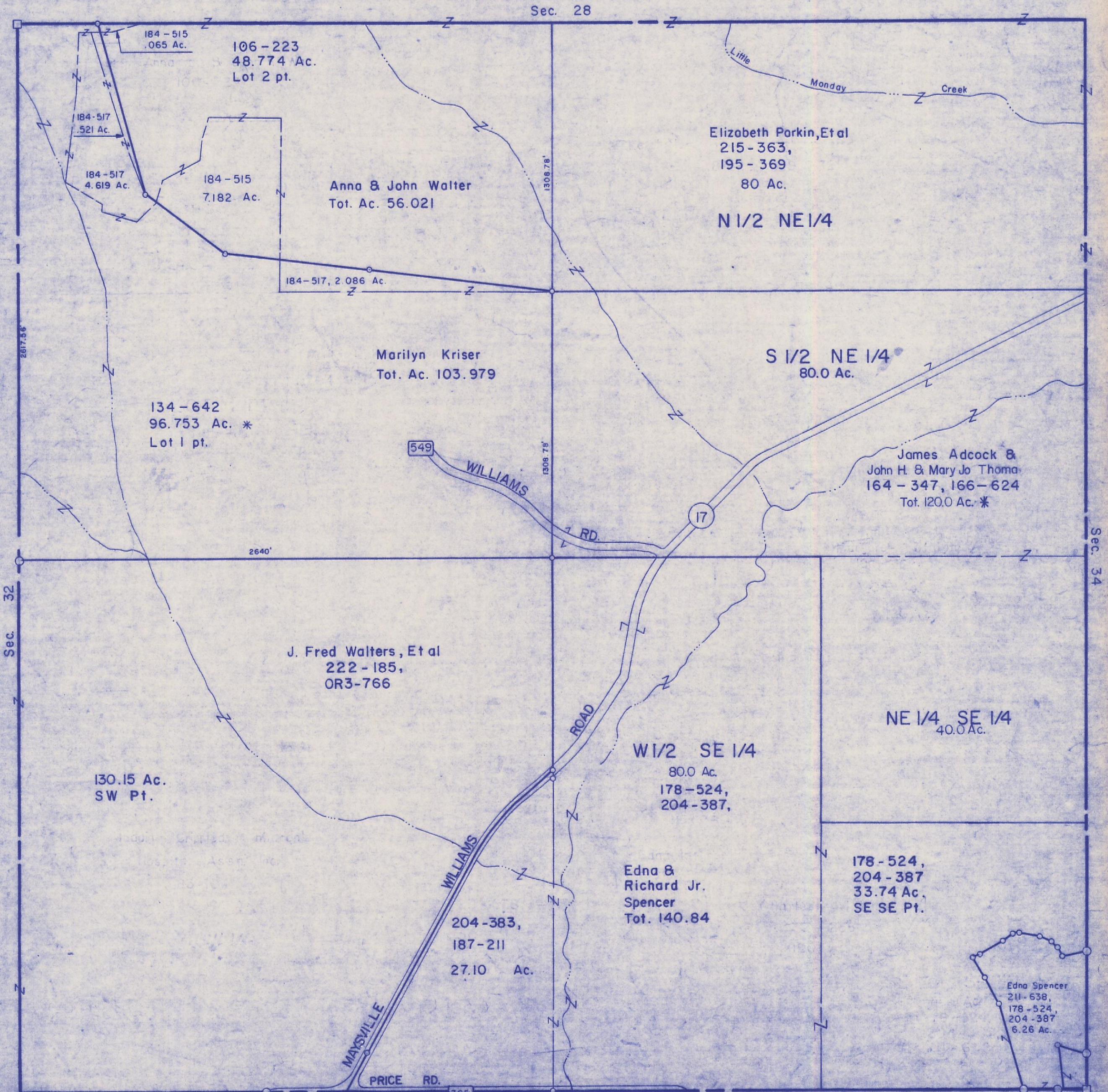


HOCKING COUNTY

Sec. 33

FALLS GORE TWP

Scale 1" = 400'



106-223
48.774 Ac.
Lot 2 pt.

184-515
.065 Ac.

184-517
.521 Ac.

184-517
4.619 Ac.

184-515
7.182 Ac.

Anna & John Walter
Tot. Ac. 56.021

Elizabeth Parkin, Et al
215-363,
195-369
80 Ac.

N 1/2 NE 1/4

184-517, 2.086 Ac.

Marilyn Kriser
Tot. Ac. 103.979

S 1/2 NE 1/4
80.0 Ac.

134-642
96.753 Ac. *
Lot 1 pt.

549
WILLIAMS
RD.

James Adcock &
John H. & Mary Jo Thoma
164-347, 166-624
Tot. 120.0 Ac. *

J. Fred Walters, Et al
222-185,
OR3-766

130.15 Ac.
SW Pt.

W 1/2 SE 1/4
80.0 Ac.
178-524,
204-387,

NE 1/4 SE 1/4
40.0 Ac.

Edna &
Richard Jr.
Spencer
Tot. 140.84

204-383,
187-211
27.10 Ac.

178-524,
204-387
33.74 Ac.
SE SE Pt.

Edna Spencer
211-638,
178-524,
204-387
6.26 Ac.

MAXVILLE

PRICE RD.

365

Green Twp. Sec. 24

Green Twp. Sec. 18

SEC 33