

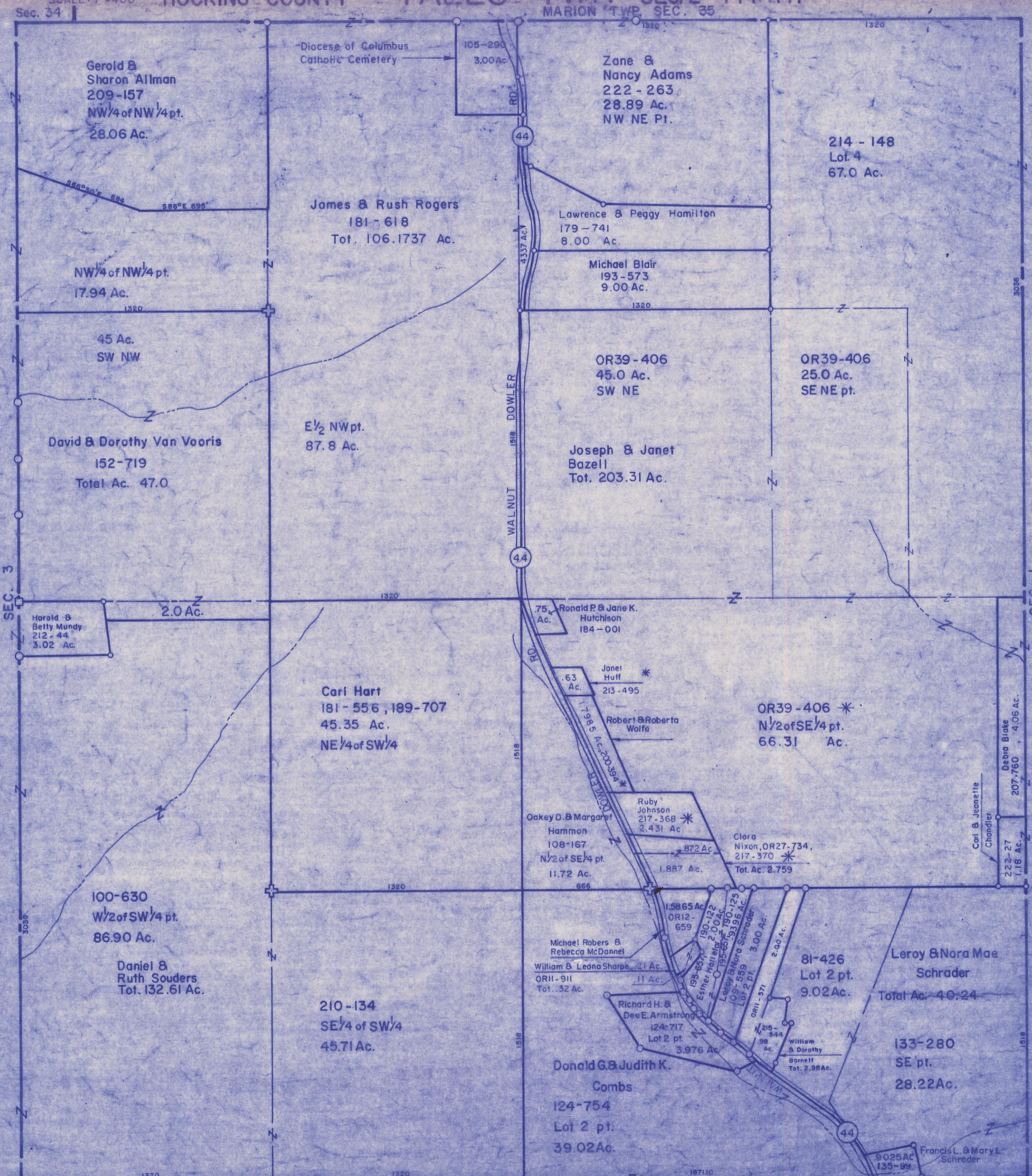
SCALE: 1"=400'

HOCKING COUNTY

FALLS TWP.

MARION TWP. SEC. 35

SEC. 2 T14 R17



Gerold & Sharon Allman
209-157
NW 1/4 of NW 1/4 pt.
28.06 Ac.

Diocese of Columbus
Catholic Cemetery

105-290
3.00 Ac.

Zane & Nancy Adams
222-263
28.89 Ac.
NW NE Pt.

214-148
Lot 4
67.0 Ac.

James & Rush Rogers
181-618
Tot. 106.1737 Ac.

Lawrence & Peggy Hamilton
179-741
8.00 Ac.

NW 1/4 of NW 1/4 pt.
17.94 Ac.

Michael Blair
193-573
9.00 Ac.

45 Ac.
SW NW

OR39-406
45.0 Ac.
SW NE

OR39-406
25.0 Ac.
SE NE pt.

David & Dorothy Van Vooris
152-719
Total Ac. 47.0

E 1/2 NW pt.
87.8 Ac.

Joseph & Janet
Bazell
Tot. 203.31 Ac.

Harold & Betty Mundy
212-44
3.02 Ac.

2.0 Ac.

.75 Ac.
Ronald P & Jane K.
Hutchison
184-001

Carl Hart
181-556, 189-707
45.35 Ac.
NE 1/4 of SW 1/4

.63 Ac.
Janet Huff *

Robert & Roberta
Wolfe

OR39-406 *
N 1/2 of SE 1/4 pt.
66.31 Ac.

100-630
W 1/2 of SW 1/4 pt.
86.90 Ac.

Daniel & Ruth Souders
Tot. 132.61 Ac.

210-134
SE 1/4 of SW 1/4
45.71 Ac.

Oakey D. & Margaret
Hammon
108-167
N 1/2 of SE 1/4 pt.
11.72 Ac.

Ruby Johnson
217-368 *

Clara Nixon, OR27-734,
217-370 *

100-630
W 1/2 of SW 1/4 pt.
86.90 Ac.

Daniel & Ruth Souders
Tot. 132.61 Ac.

210-134
SE 1/4 of SW 1/4
45.71 Ac.

Oakey D. & Margaret
Hammon
108-167
N 1/2 of SE 1/4 pt.
11.72 Ac.

Ruby Johnson
217-368 *

Clara Nixon, OR27-734,
217-370 *

Michael Robers & Rebecca McDannel
William & Leona Sharpe
OR11-911
Tot. .32 Ac.

Richard H. & Dee E. Armstrong
124-717
Lot 2 pt.
3.976 Ac.

Donald G. & Judith K.
Combs
124-754
Lot 2 pt.
39.02 Ac.

1.5865 Ac.
OR12-659

190-122
2.00 Ac.

195-559
2.00 Ac.

190-125
3.00 Ac.

215-544
98 Ac.

81-426
Lot 2 pt.
9.02 Ac.

Leroy & Nora Mae
Schrader
Total Ac. 49.24

133-280
SE pt.
28.22 Ac.

Francis L. & Mary L.
Schrader

Carl & Jeanette
Chandler

222-27
1.18 Ac.

Debra Blake
207-760
4.06 Ac.

SEC. 11

SEC. 2