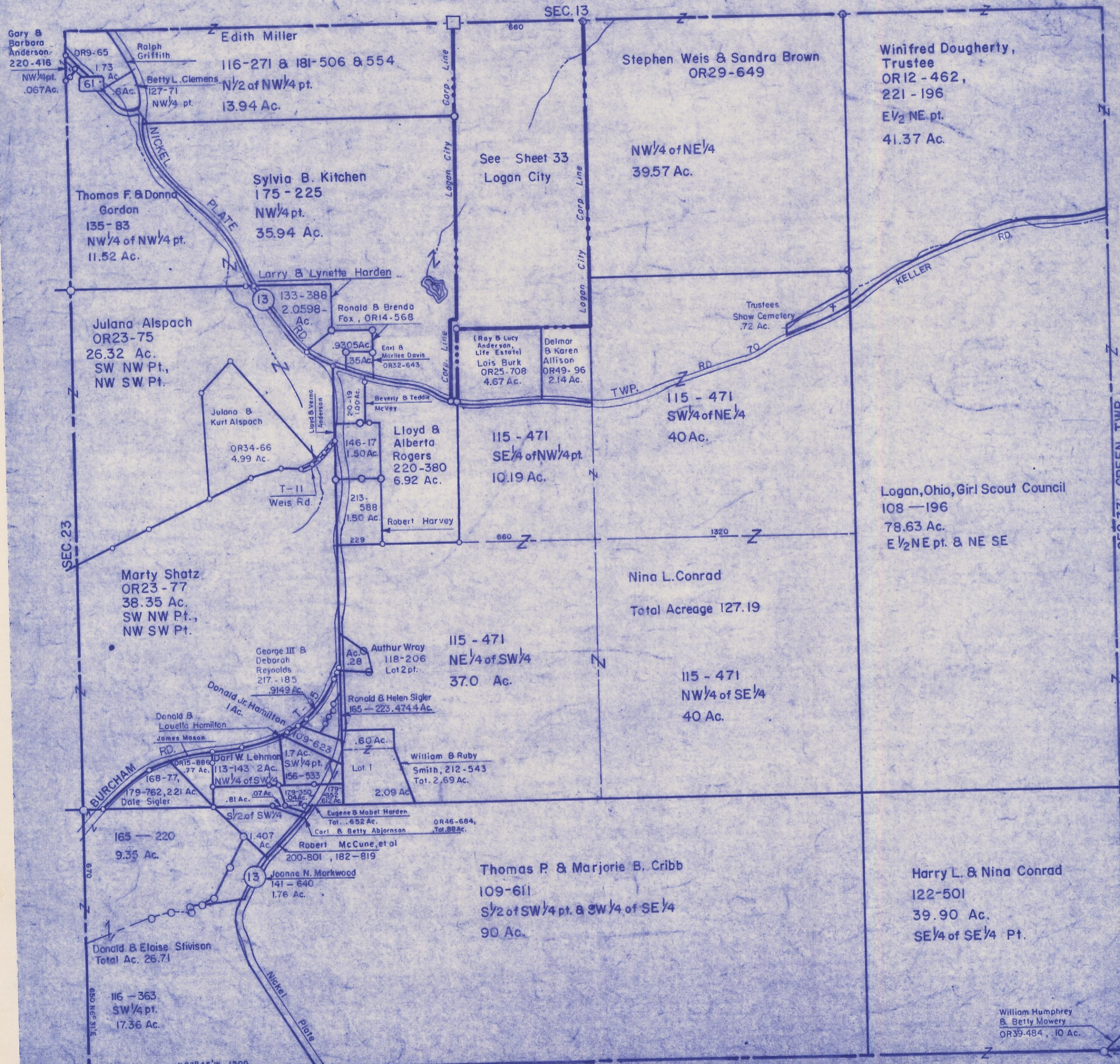


HOCKING COUNTY

Sec. 24 T.14 R.17

FALLS TWP.

Scale: 1"=400'



Gary & Barbara Anderson  
220-416  
NW 1/4 pt.  
.067 Ac.

Edith Miller  
116-271 & 181-506 & 554  
N 1/2 of NW 1/4 pt.  
13.94 Ac.

Stephen Weis & Sandra Brown  
OR29-649

Winifred Dougherty,  
Trustee  
OR12-462,  
221-196  
E 1/2 NE pt.  
41.37 Ac.

Thomas F. & Donna Gordon  
135-83  
NW 1/4 of NW 1/4 pt.  
11.52 Ac.

Sylvia B. Kitchen  
175-225  
NW 1/4 pt.  
35.94 Ac.

See Sheet 33  
Logan City

NW 1/4 of NE 1/4  
39.57 Ac.

Julana Alspach  
OR23-75  
26.32 Ac.  
SW NW Pt.,  
NW SW Pt.

Larry & Lynette Harden  
133-388  
2.0598 Ac.

Ronald & Brenda Fox, OR14-568

(Ray & Lucy Anderson, Life Estate)  
Lois Burk  
OR25-708  
4.67 Ac.

Delmar & Karen Allison  
OR49-96  
2.14 Ac.

115-471  
SW 1/4 of NE 1/4  
40 Ac.

Julana & Kurt Alspach  
OR34-66  
4.99 Ac.

Lloyd & Alberta Rogers  
220-380  
6.92 Ac.

115-471  
SE 1/4 of NW 1/4 pt.  
10.19 Ac.

Logan, Ohio, Girl Scout Council  
108-196  
78.63 Ac.  
E 1/2 NE pt. & NE SE

Marty Shatz  
OR23-77  
38.35 Ac.  
SW NW Pt.,  
NW SW Pt.

George III & Deborah Reynolds  
217-185  
.9149 Ac.

Authur Wray  
118-206  
Lot 2 pt.  
Ac. .28

115-471  
NE 1/4 of SW 1/4  
37.0 Ac.

Nina L. Conrad  
Total Acreage 127.19

115-471  
NW 1/4 of SE 1/4  
40 Ac.

Donald & Louella Hamilton  
James Mason

Darl W. Lehman  
OR15-886  
.77 Ac.  
113-143  
2 Ac.  
NW 1/4 of SW 1/4

William & Ruby Smith, 212-543  
Tot. 2.69 Ac.

165-220  
9.35 Ac.

Eugene & Mabel Harden  
Tot. .652 Ac.  
Carl & Betty Abjornson  
OR46-684,  
Tot. 88 Ac.

Robert McCune, et al  
200-801, 182-819

Thomas P. & Marjorie B. Cribb  
109-611  
S 1/2 of SW 1/4 pt. & SW 1/4 of SE 1/4  
90 Ac.

Harry L. & Nina Conrad  
122-501  
39.90 Ac.  
SE 1/4 of SE 1/4 Pt.

Donald & Eloise Stivison  
Total Ac. 26.71

116-363  
SW 1/4 pt.  
17.36 Ac.

William Humphrey & Betty Mowery  
OR39-484, .10 Ac.

N 83° 45' W 1200

SEC. 25

SEC. 24

SEC. 33 GREEN TWP.

SEC. 32