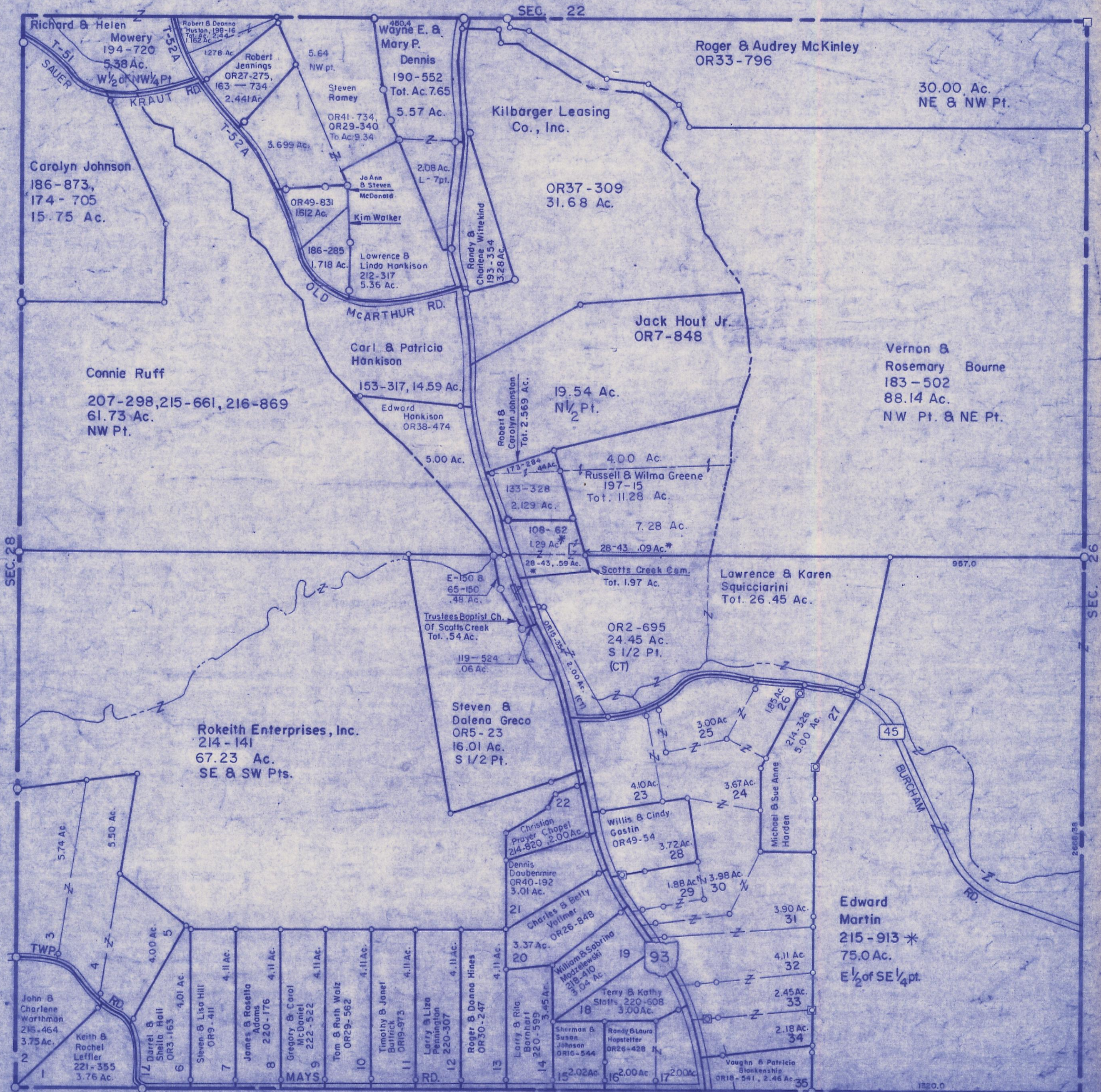


HOCKING COUNTY

Sec. 27 T14 R17

FALLS TWP.

Scale 1"=400'



DEERFIELD FARMS SUB (SECTION 1) (SECTION 2)

Unmarked Lots Are Owned By:
Rokeith Enterprises, Inc.
214-141

Lots 1-22
-Plot Cab. I, Pgs. 171 B, 172 A, B
-Lots 16 & 17 Revised, OR26-223

Lots 23-25
-Plot Cab. I, Pgs. 190B, 191A

SEC. 27