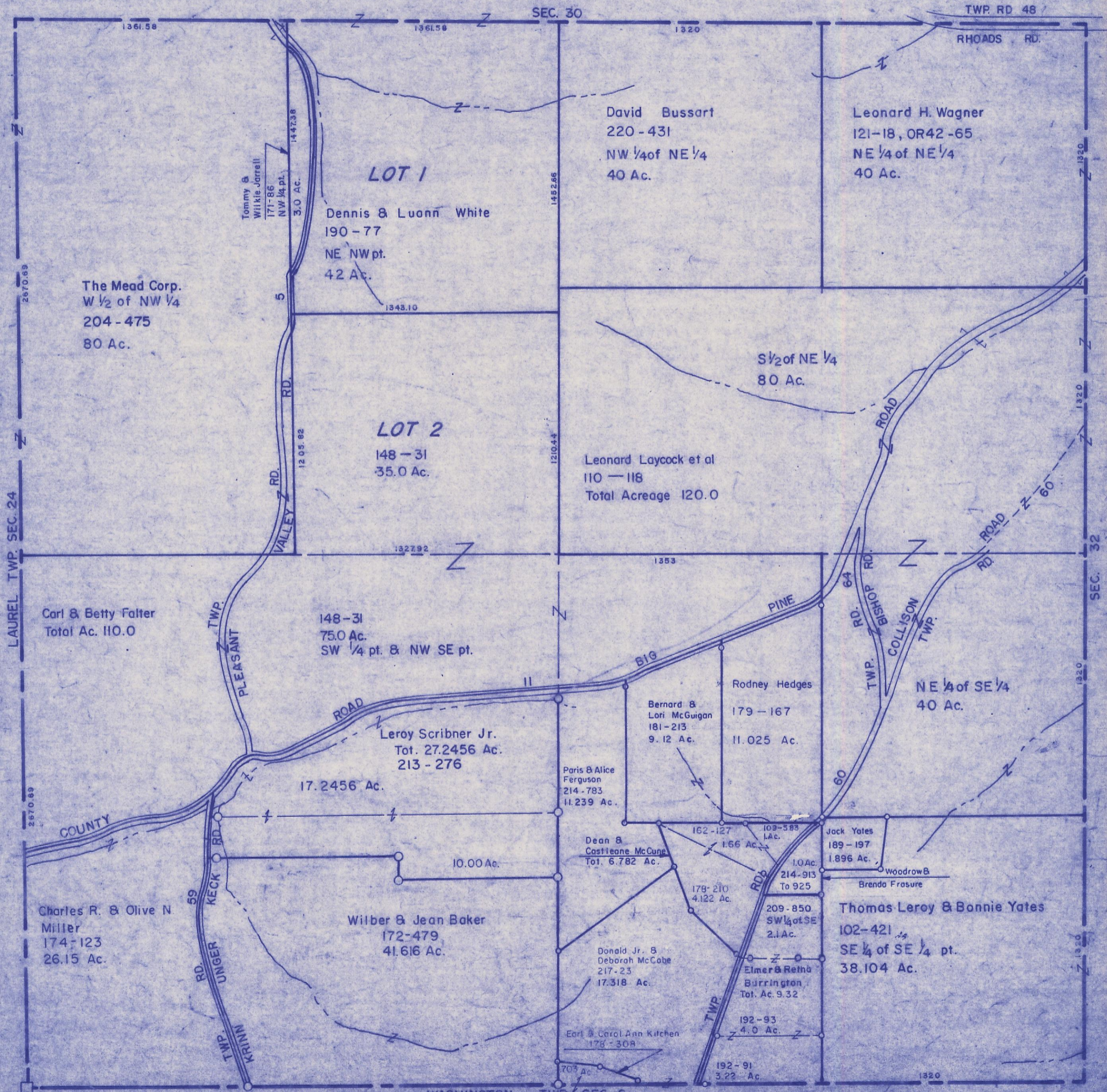


HOCKING COUNTY

Sec. 31 T.14 R.17

FALLS TWP

Scale 1"=400'



The Mead Corp.
W 1/2 of NW 1/4
204 - 475
80 Ac.

LOT 1

Dennis & Luonn White
190 - 77
NE NW pt.
42 Ac.

David Bussart
220 - 431
NW 1/4 of NE 1/4
40 Ac.

Leonard H. Wagner
121-18, OR42 -65
NE 1/4 of NE 1/4
40 Ac.

LOT 2

148 - 31
35.0 Ac.

Leonard Laycock et al
110 - 118
Total Acreage 120.0

S 1/2 of NE 1/4
80 Ac.

Carl & Betty Falter
Total Ac. 110.0

148 - 31
75.0 Ac.
SW 1/4 pt. & NW SE pt.

Leroy Scribner Jr.
Tot. 27.2456 Ac.
213 - 276

Bernard & Lori McGuigan
181 - 213
9.12 Ac.

Rodney Hedges
179 - 167
11.025 Ac.

NE 1/4 of SE 1/4
40 Ac.

Charles R. & Olive N.
Miller
174 - 123
26.15 Ac.

Wilber & Jean Baker
172 - 479
41.616 Ac.

Paris & Alice
Ferguson
214 - 783
11.239 Ac.

Dean & Castleane
McCune
Tot. 6.782 Ac.

162 - 127
1.66 Ac.

109 - 588
1 Ac.

Jack Yates
189 - 197
1.896 Ac.

Woodrow B.
Brenda Frasure

Thomas Leroy & Bonnie Yates
102 - 421
SE 1/4 of SE 1/4 pt.
38.104 Ac.

Donald Jr. &
Deborah McCabe
217 - 23
17.318 Ac.

209 - 850
SW 1/4 of SE
2.1 Ac.

Elmer & Retha
Burrington
Tot. Ac. 9.32

Earl & Carol Ann
Kitchen
178 - 308
7.05 Ac.

192 - 93
4.0 Ac.

192 - 91
3.22 Ac.

SEC. 31