

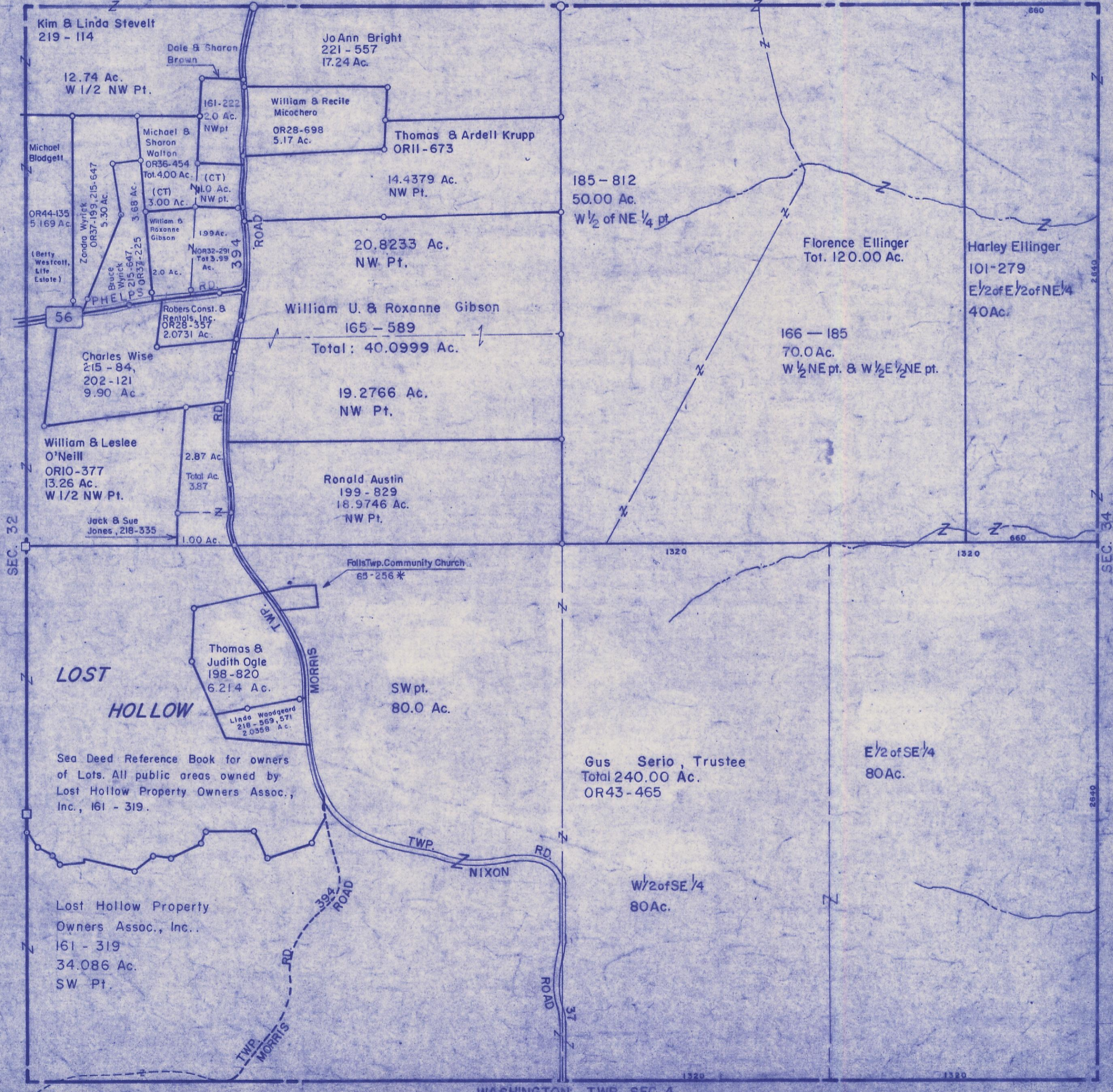
HOCKING COUNTY

Sec. 33 T.14 R.17

FALLS TWP.

Scale 1"=400

SEC. 28



Kim & Linda Stevelt
219 - 114

12.74 Ac.
W 1/2 NW Pt.

JoAnn Bright
221 - 557
17.24 Ac.

Dale & Sharon
Brown

161-222
2.0 Ac.
NWpt

William & Recile
Micochero
OR28-698
5.17 Ac.

Thomas & Ardell Krupp
OR11-673

Michael
Blodgett

Michael &
Sharon
Walton
OR36-454
Tot.4.00 Ac.

(CT)
1.0 Ac.
NW pt.

14.4379 Ac.
NW Pt.

185 - 812
50.00 Ac.
W 1/2 of NE 1/4 pt.

OR44-135
5.169 Ac.

Zendra Wyrick
OR37-199, 215-647
5.30 Ac.

Bruce
Wyrick
OR37-223
3.88 Ac.

William &
Roxanne
Gibson
1.99 Ac.

(CT)
3.00 Ac.

NOR32-291
Tot.3.99
Ac.

20.8233 Ac.
NW Pt.

Florence Ellinger
Tot. 120.00 Ac.

Harley Ellinger
101-279
E 1/2 of E 1/2 of NE 1/4
40Ac.

(Betty
Westcott,
Life
Estate)

56

Roberts Const. &
Rentals, Inc.
OR28-357
2.0731 Ac.

William U. & Roxanne Gibson
165 - 589
Total: 40.0999 Ac.

Charles Wise
215 - 84,
202 - 121
9.90 Ac.

19.2766 Ac.
NW Pt.

166 - 185
70.0 Ac.
W 1/2 NE pt. & W 1/2 E 1/2 NE pt.

William & Leslee
O'Neill
OR10-377
13.26 Ac.
W 1/2 NW Pt.

2.87 Ac.
Total Ac.
3.87

Ronald Austin
199 - 829
18.9746 Ac.
NW Pt.

Jack & Sue
Jones, 218-335
1.00 Ac.

Falls Twp. Community Church
65-256 *

**LOST
HOLLOW**

Thomas &
Judith Ogle
198 - 820
6.214 Ac.

SW pt.
80.0 Ac.

Linda Woodgeard
218 - 569, 571
2.0558 Ac.

Sea Deed Reference Book for owners
of Lots. All public areas owned by
Lost Hollow Property Owners Assoc.,
Inc., 161 - 319.

Gus Serio, Trustee
Total 240.00 Ac.
OR43 - 465

E 1/2 of SE 1/4
80Ac.

Lost Hollow Property
Owners Assoc., Inc.,
161 - 319
34.086 Ac.
SW Pt.

W 1/2 of SE 1/4
80Ac.

WASHINGTON TWP. SEC. 4

SEC. 33