

HOCKING COUNTY

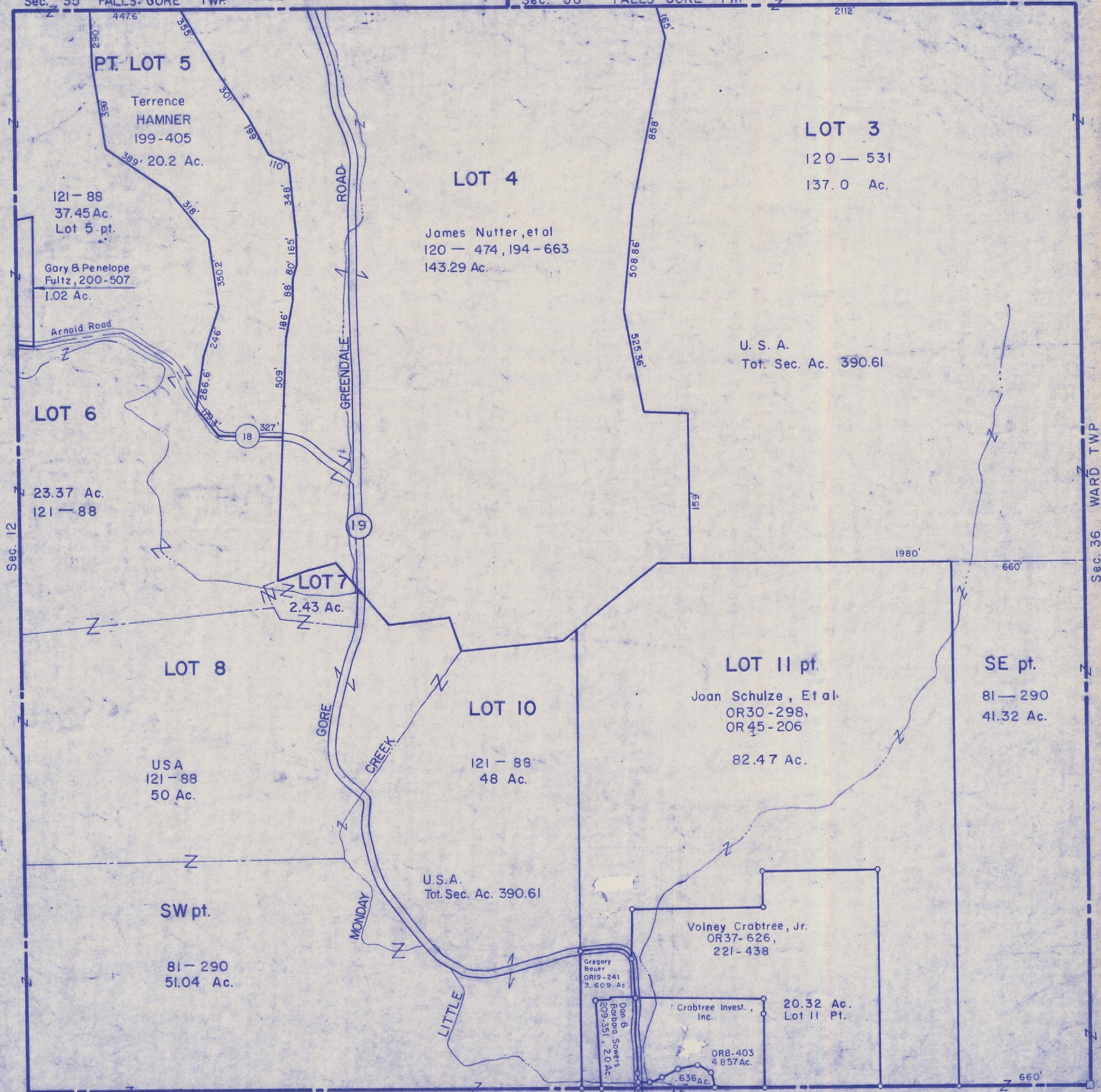
Sec. 6 T13 R16

GREEN TWP.

Scale - 1" = 400'

Sec. 35 FALLS GORE TWP

Sec. 36 FALLS GORE TWP



PT. LOT 5

Terrence HAMNER
199-405

20.2 Ac.

121-88
37.45 Ac.
Lot 5 pt.

Gary & Penelope
Fultz, 200-507
1.02 Ac.

LOT 6

23.37 Ac.
121-88

LOT 7

2.43 Ac.

LOT 8

USA
121-88
50 Ac.

LOT 4

James Nutter, et al
120-474, 194-663
143.29 Ac.

LOT 3

120-531

137.0 Ac.

U. S. A.
Tot. Sec. Ac. 390.61

LOT 10

121-88
48 Ac.

LOT 11 pt.

Joan. Schulze, Et al
OR30-298,
OR45-206

82.47 Ac.

SE pt.

81-290
41.32 Ac.

SW pt.

81-290
51.04 Ac.

U.S.A.
Tot. Sec. Ac. 390.61

Volney Crabtree, Jr.
OR37-626,
221-438

Gregory
Bauer
OR19-241
3.609 Ac.

Don B.
Robb
Sowers
209-351, 2.0 Ac.

Crabtree Invest.,
Inc.

20.32 Ac.
Lot 11 Pt.

OR8-403
4.857 Ac.

James B.
Helen Ucker
194-104

SEC. 6