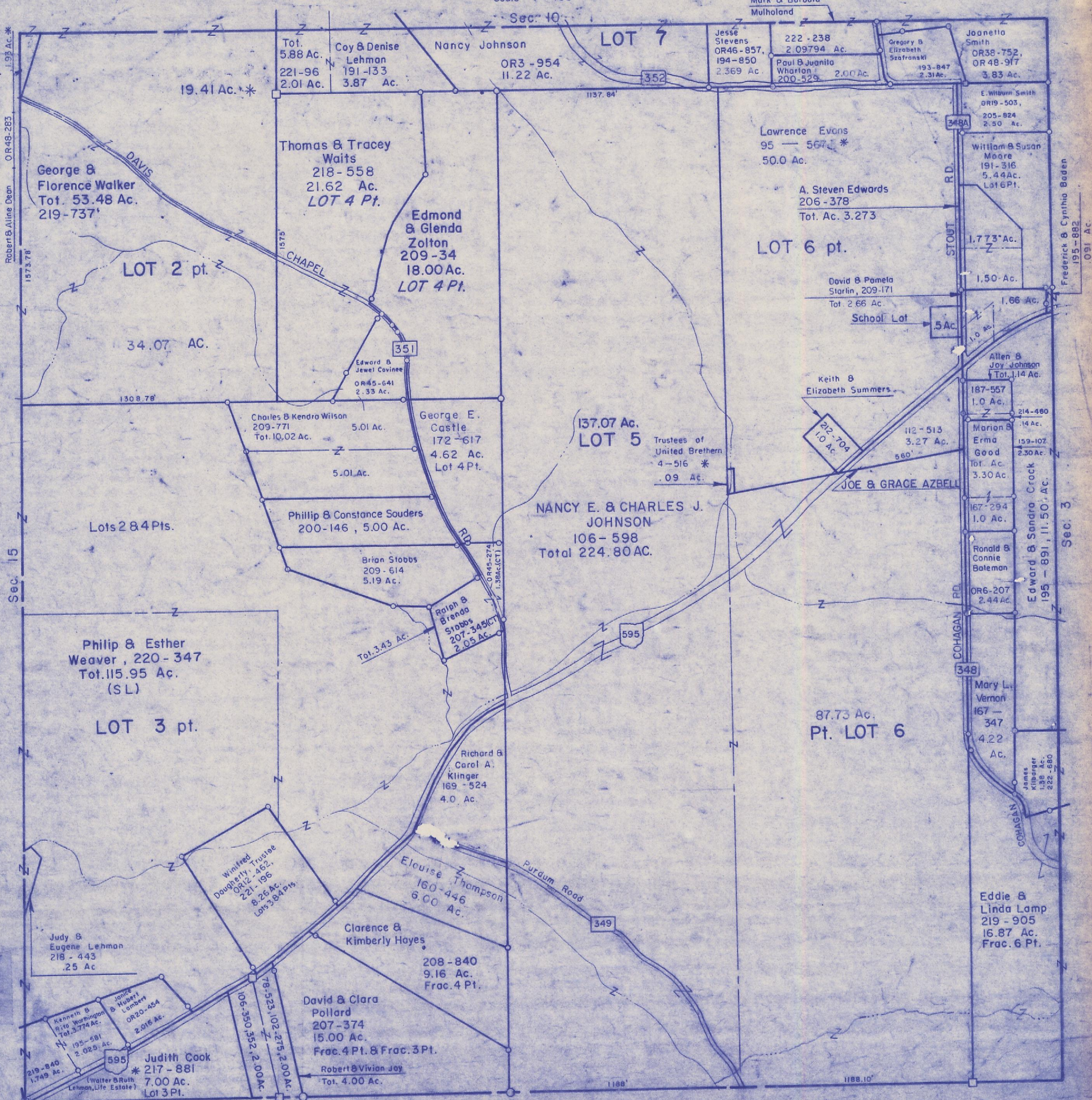


HOCKING COUNTY

Sec. 9 T13 R16.

GREEN TWP

Scale 1"=400'



Robert & Aline Dean
OR48-283
1573.78
1.93 Ac.*
Sec. 15

Tot. 5.88 Ac.
Coy & Denise Lehman
221-96 2.01 Ac.
191-133 3.87 Ac.
19.41 Ac.*

Nancy Johnson
OR3-954
11.22 Ac.
LOT 7

Mark & Barbara Mulholland
Jesse Stevens
OR46-857, 194-850
2.369 Ac.
222-238
2.09794 Ac.
Paul & Juanita Wharton
200-529 2.00 Ac.

Gregory B. Elizabeth Szofronski
193-847
2.31 Ac.
Joanella Smith
OR38-752, OR48-917
3.83 Ac.

George & Florence Walker
Tot. 53.48 Ac.
219-737

LOT 2 pt.

Thomas & Tracey Waits
218-558
21.62 Ac.
LOT 4 Pt.

Edmond & Glenda Zolton
209-34
18.00 Ac.
LOT 4 Pt.

Lawrence Evans
95-567*
50.0 Ac.

LOT 6 pt.

A. Steven Edwards
206-378
Tot. Ac. 3.273

David & Pamela Starlin, 209-171
Tot. 2.66 Ac.

School Lot
5 Ac.

34.07 AC.

Charles & Kendra Wilson
209-771
Tot. 10.02 Ac.
5.01 Ac.

George E. Castle
172-617
4.62 Ac.
Lot 4 Pt.

137.07 Ac.
LOT 5

Trustees of United Brethren
4-516*
.09 Ac.

NANCY E. & CHARLES J. JOHNSON
106-598
Total 224.80 AC.

Phillip & Constance Souders
200-146, 5.00 Ac.

Brian Stobbs
209-614
5.19 Ac.

Ralph & Brenda Stobbs
207-345(CT)
2.05 Ac.

Keith & Elizabeth Summers
212-704
1.0 Ac.

112-513
3.27 Ac.
560'

JOE & GRACE AZBELL

Philip & Esther Weaver, 220-347
Tot. 115.95 Ac.
(SL)

LOT 3 pt.

Richard & Carol A. Klinger
169-524
4.0 Ac.

87.73 Ac.
Pt. LOT 6

Winifred Dougherty, Trustee
OR12-462,
221-196
8.26 Ac.
Lots 3, 4 Pts.

Elouise Thompson
160-446
6.00 Ac.

Clarence & Kimberly Hoyes
208-840
9.16 Ac.
Frac. 4 Pt.

Judy & Eugene Lehman
218-443
.25 Ac.

Kenneth & Rita Worthington
Tot. 3.774 Ac.
195-581
2.025 Ac.

Janice Hubert Lambert
OR20-454
2.015 Ac.

Judith Cook
217-881
7.00 Ac.
Lot 3 Pt.

David & Clara Pollard
207-374
15.00 Ac.
Frac. 4 Pt. & Frac. 3 Pt.

Robert & Vivian Joy
Tot. 4.00 Ac.

Eddie & Linda Lamp
219-905
16.87 Ac.
Frac. 6 Pt.

Sec. 9