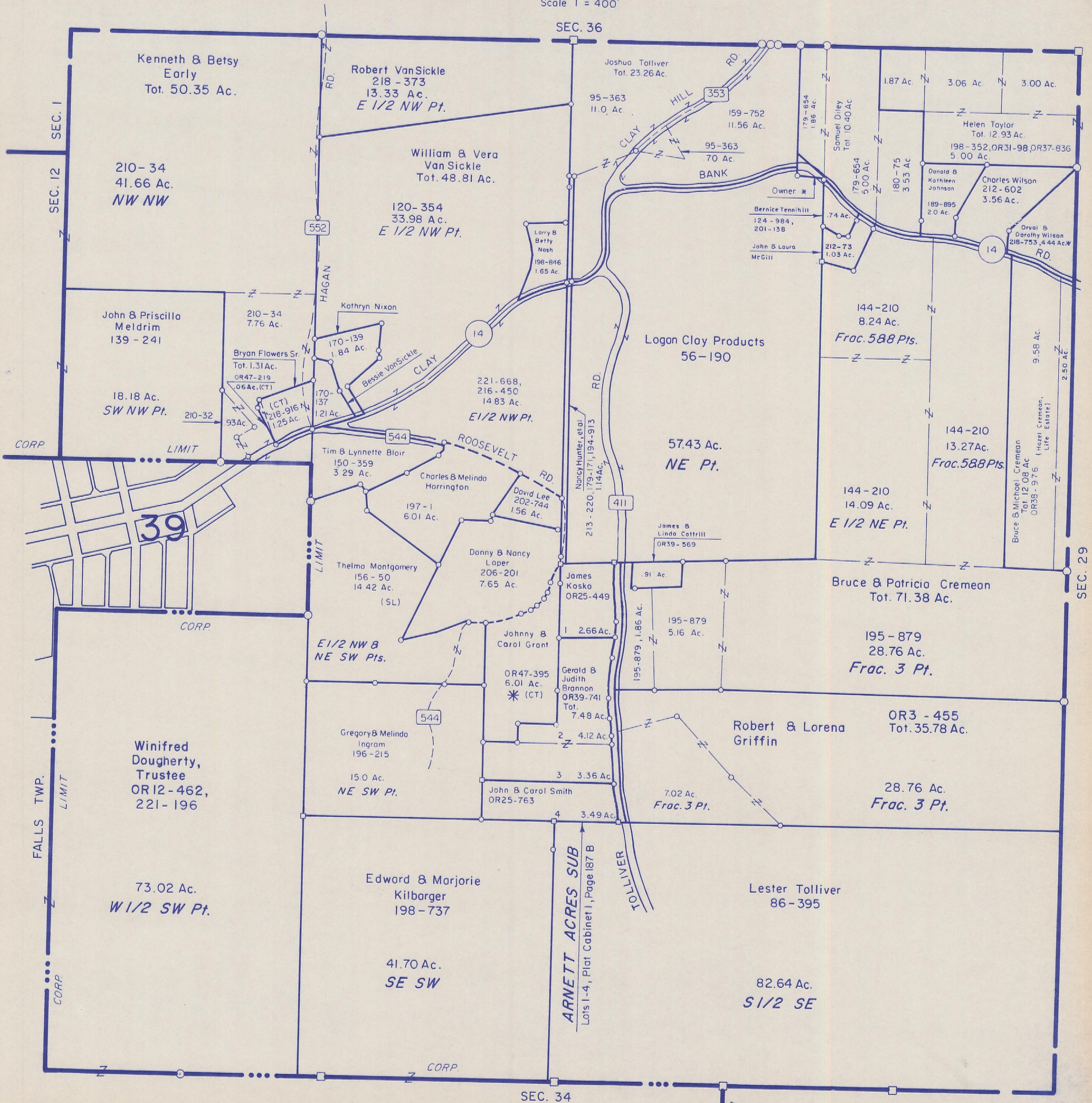


HOCKING COUNTY

Sec. 35 T13 R16

GREEN TWP.

Scale 1" = 400'



Kenneth & Betsy Early
Tot. 50.35 Ac.

Robert VanSickle
218-373
13.33 Ac.
E 1/2 NW Pt.

Joshua Tolliver
Tot. 23.26 Ac.

210-34
41.66 Ac.
NW NW

William & Vera Van Sickle
Tot. 48.81 Ac.

120-354
33.98 Ac.
E 1/2 NW Pt.

95-363
11.0 Ac.

159-752
11.56 Ac.

1.87 Ac. 3.06 Ac. 3.00 Ac.

Helen Taylor
Tot. 12.93 Ac.
198-352, OR31-98, OR37-836
5.00 Ac.

Donald B Kathleen Johnson
189-895
2.0 Ac.

Charles Wilson
212-602
3.56 Ac.

Orval B Dorothy Wilson
218-753, 4.44 Ac.

John & Priscilla Meldrim
139-241

210-34
7.76 Ac.

Kathryn Nixon
170-139
1.84 Ac.

Bryan Flowers Sr.
Tot. 1.31 Ac.
OR47-219
.06 Ac. (CT)

Bessie VanSickle
170-137
1.21 Ac.

18.18 Ac.
SW NW Pt.

210-32
93 Ac.

(CT) 218-916
1.25 Ac.

221-668,
216-450
14.83 Ac.
E 1/2 NW Pt.

Logan Clay Products
56-190

144-210
8.24 Ac.
Frac. 588 Pts.

144-210
13.27 Ac.
Frac. 588 Pts.

144-210
14.09 Ac.
E 1/2 NE Pt.

Bruce & Michael Cremean
Tot. 12.08 Ac.
OR38-976
(Hazel Cremean, Life Estate)

39

Tim & Lynnette Blair
150-359
3.29 Ac.

Charles & Melinda Harrington
197-1
6.01 Ac.

David Lee
202-744
1.56 Ac.

James & Linda Cottrill
OR39-569
.91 Ac.

Thelma Montgomery
156-50
14.42 Ac.
(SL)

Danny & Nancy Loper
206-201
7.65 Ac.

James Kosko
OR25-449
1.266 Ac.

Bruce & Patricia Cremean
Tot. 71.38 Ac.

E 1/2 NW & NE SW Pts.

Johnny & Carol Grant
OR47-395
6.01 Ac.
(CT)

Gerald & Judith Brannon
OR39-741
Tot. 7.48 Ac.

195-879
5.16 Ac.

195-879
28.76 Ac.
Frac. 3 Pt.

Winifred Dougherty, Trustee
OR12-462,
221-196

Gregory & Melinda Ingram
196-215
15.0 Ac.
NE SW Pt.

John & Carol Smith
OR25-763
3.36 Ac.

Robert & Lorena Griffin
OR3-455
Tot. 35.78 Ac.

28.76 Ac.
Frac. 3 Pt.

73.02 Ac.
W 1/2 SW Pt.

Edward & Marjorie Kilbarger
198-737
41.70 Ac.
SE SW

John & Carol Smith
OR25-763
3.49 Ac.

7.02 Ac.
Frac. 3 Pt.

Lester Tolliver
86-395
82.64 Ac.
S 1/2 SE

ARNETT ACRES SUB
Lots 1-4, Plat Cabinet 1, Page 187 B

SEC. 35