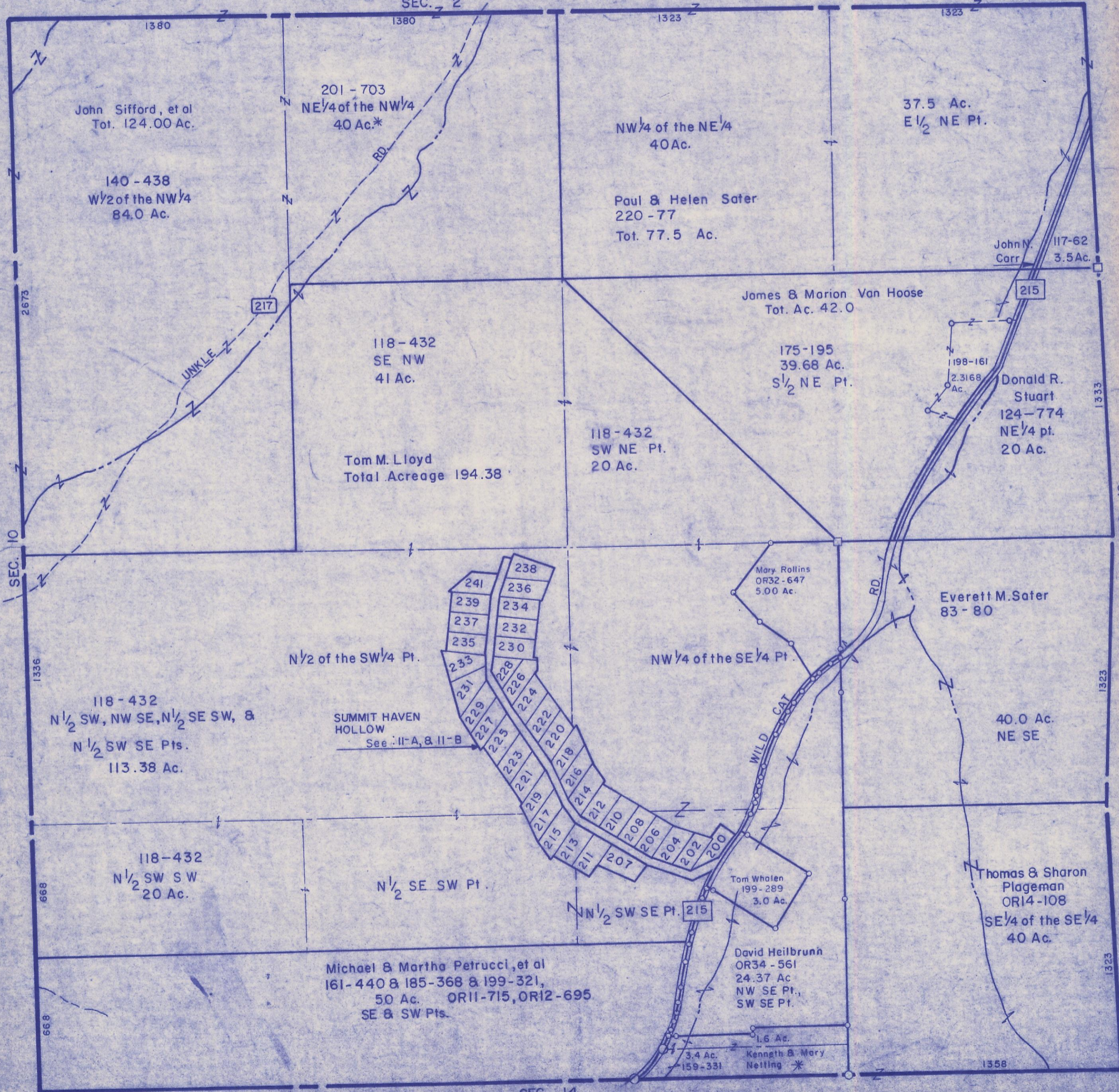


HOCKING COUNTY

Sec. 11 T12 R18

LAUREL TWP.

Scale 1" = 400'



John Sifford, et al  
Tot. 124.00 Ac.

140-438  
W 1/2 of the NW 1/4  
84.0 Ac.

201-703  
NE 1/4 of the NW 1/4  
40 Ac.\*

NW 1/4 of the NE 1/4  
40 Ac.

37.5 Ac.  
E 1/2 NE Pt.

Paul & Helen Safer  
220-77  
Tot. 77.5 Ac.

John N. Carr  
117-62  
3.5 Ac.

James & Marion Van Hoose  
Tot. Ac. 42.0

118-432  
SE NW  
41 Ac.

175-195  
39.68 Ac.  
S 1/2 NE Pt.

Donald R. Stuart  
124-774  
NE 1/4 pt.  
20 Ac.

Tom M. Lloyd  
Total Acreage 194.38

118-432  
SW NE Pt.  
20 Ac.

Mary Rollins  
OR32-647  
5.00 Ac.

Everett M. Safer  
83-80

118-432  
N 1/2 SW, NW SE, N 1/2 SE SW, &  
N 1/2 SW SE Pts.  
113.38 Ac.

N 1/2 of the SW 1/4 Pt.

SUMMIT HAVEN  
HOLLOW  
See II-A, & II-B

NW 1/4 of the SE 1/4 Pt.

40.0 Ac.  
NE SE

118-432  
N 1/2 SW SW  
20 Ac.

N 1/2 SE SW Pt.

Tom Whalen  
199-289  
3.0 Ac.

Thomas & Sharon  
Plageman  
OR14-108  
SE 1/4 of the SE 1/4  
40 Ac.

Michael & Martha Petrucci, et al  
161-440 & 185-368 & 199-321,  
50 Ac. OR11-715, OR12-695  
SE & SW Pts.

David Heilbrunn  
OR34-561  
24.37 Ac  
NW SE Pt.,  
SW SE Pt.

1.6 Ac.  
Kenneth & Mary  
Netting \*

3.4 Ac.  
159-331

SEC. 10

SEC. 2

SEC. 12

SEC. 14

SEC. 11