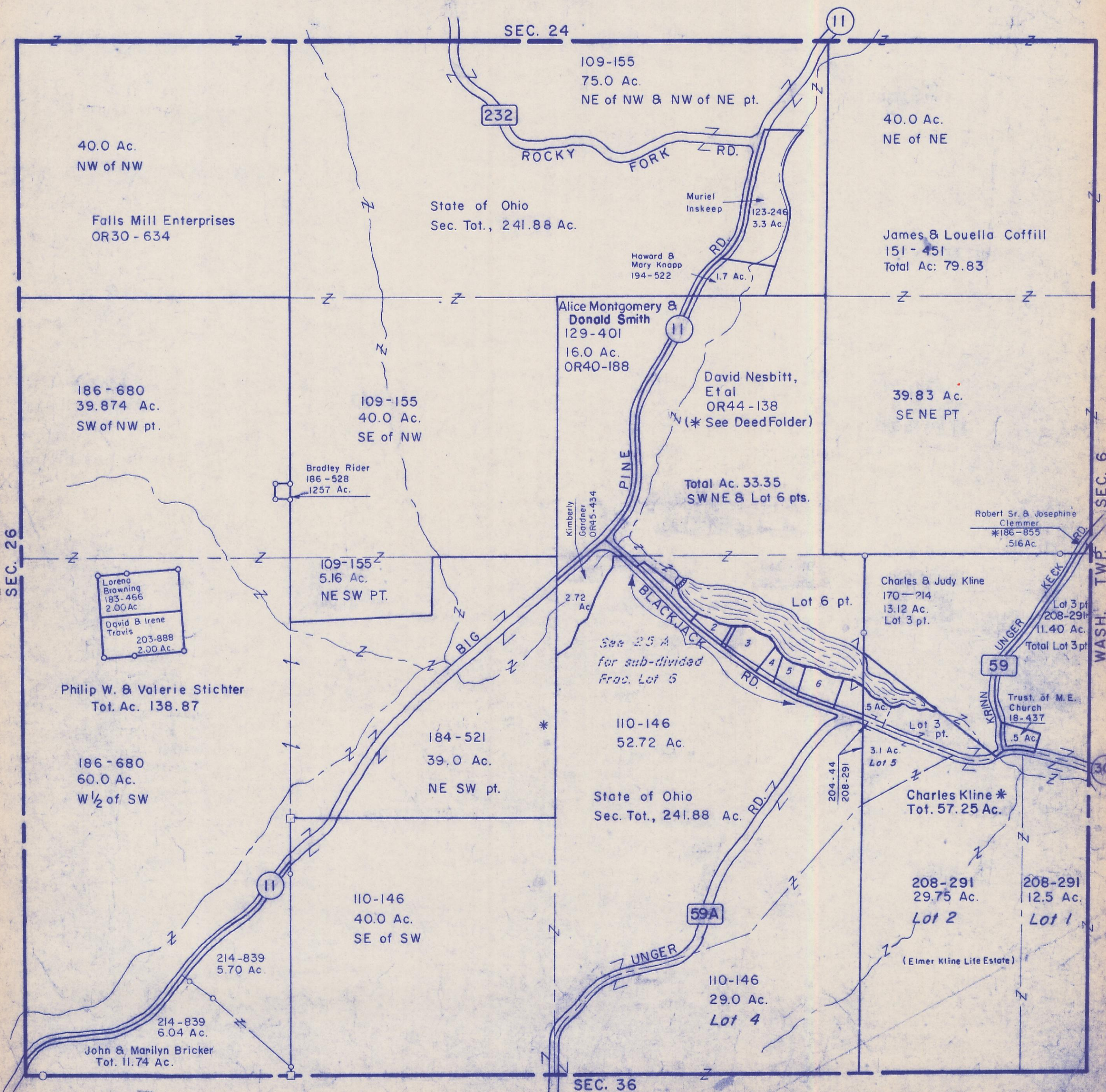


HOCKING COUNTY

LAUREL TWP.

SEC. 25 T 12 R 18

Scale 1"=400'



SEC. 26

SEC. 6
WASH. TWP.

SEC. 25

40.0 Ac.
NW of NW

Falls Mill Enterprises
OR30 - 634

State of Ohio
Sec. Tot., 241.88 Ac.

109-155
75.0 Ac.
NE of NW & NW of NE pt.

40.0 Ac.
NE of NE

James & Louella Coffill
151 - 451
Total Ac: 79.83

186 - 680
39.874 Ac.
SW of NW pt.

109-155
40.0 Ac.
SE of NW

Alice Montgomery &
Donald Smith
129-401
16.0 Ac.
OR40-188

David Nesbitt,
Et al
OR44 - 138
(* See Deed Folder)

39.83 Ac.
SE NE PT

Bradley Rider
186 - 528
1257 Ac.

Total Ac. 33.35
SWNE & Lot 6 pts.

Robert Sr. & Josephine
Clemmer
*186-855
516 Ac.

Lorena
Browning
183-466
2.00 Ac.
David & Irene
Travis
203-888
2.00 Ac.

109-155
5.16 Ac.
NE SW PT.

See 25 A
for sub-divided
Frac. Lot 5

Charles & Judy Kline
170-214
13.12 Ac.
Lot 3 pt.

Lot 3 pt.
208-291
11.40 Ac.
Total Lot 3 pt.

Philip W. & Valerie Stichter
Tot. Ac. 138.87

184-521
39.0 Ac.
NE SW pt.

110-146
52.72 Ac.

Trust. of M.E.
Church
18-437
.5 Ac.

186 - 680
60.0 Ac.
W 1/2 of SW

State of Ohio
Sec. Tot., 241.88 Ac.

Charles Kline *
Tot. 57.25 Ac.

110-146
40.0 Ac.
SE of SW

208-291
29.75 Ac.
Lot 2

208-291
12.5 Ac.
Lot 1

214-839
5.70 Ac.
214-839
6.04 Ac.
John & Marilyn Bricker
Tot. 11.74 Ac.

110-146
29.0 Ac.
Lot 4

(Elmer Kline Life Estate)

SEC. 36