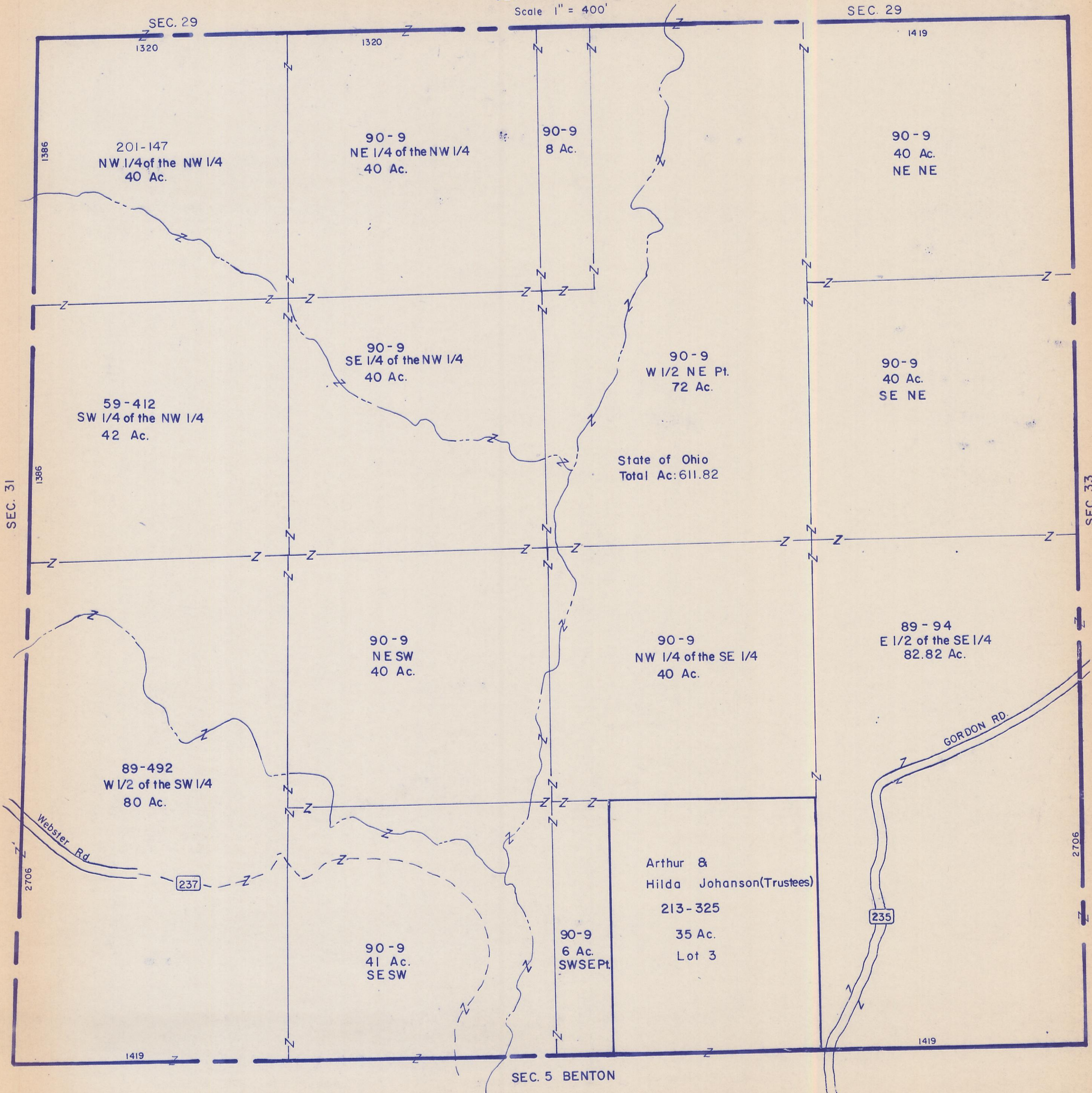


HOCKING COUNTY

LAUREL TWP.

SEC. 32 T 12 R 18

Scale 1" = 400'



SEC. 29  
1320  
1386  
201-147  
NW 1/4 of the NW 1/4  
40 Ac.

90-9  
NE 1/4 of the NW 1/4  
40 Ac.

90-9  
8 Ac.

SEC. 29  
1419  
90-9  
40 Ac.  
NE NE

59-412  
SW 1/4 of the NW 1/4  
42 Ac.

90-9  
SE 1/4 of the NW 1/4  
40 Ac.

90-9  
W 1/2 NE Pt.  
72 Ac.

90-9  
40 Ac.  
SE NE

State of Ohio  
Total Ac: 611.82

90-9  
NESW  
40 Ac.

90-9  
NW 1/4 of the SE 1/4  
40 Ac.

89-94  
E 1/2 of the SE 1/4  
82.82 Ac.

89-492  
W 1/2 of the SW 1/4  
80 Ac.

90-9  
41 Ac.  
SE SW

90-9  
6 Ac.  
SW SE Pt.

Arthur &  
Hilda Johanson (Trustees)  
213-325  
35 Ac.  
Lot 3

SEC. 32

SEC. 5 BENTON