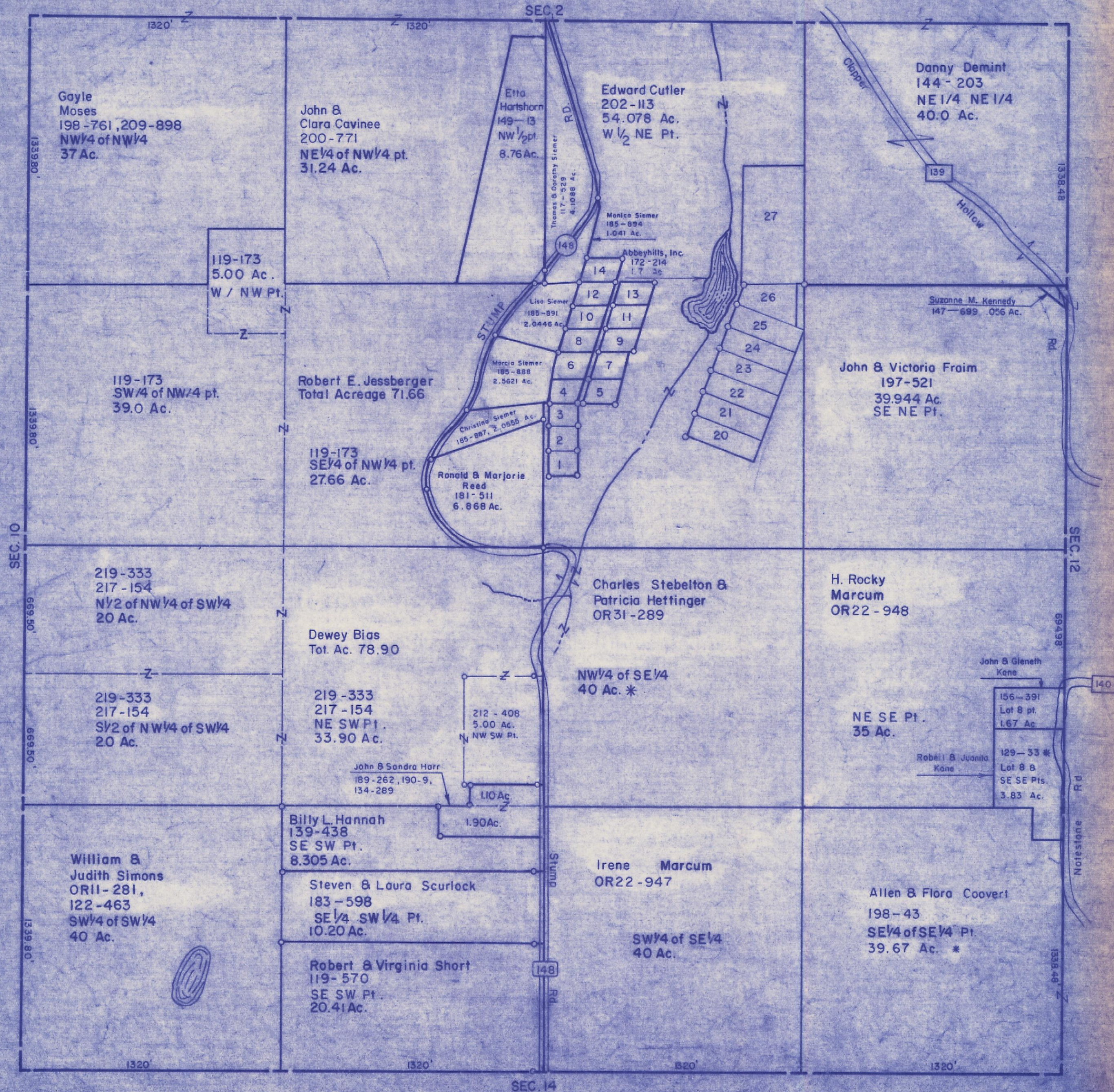


HOCKING COUNTY

Sec. 11 T12 R19

PERRY TWP.

Scale: 1" = 400'



Gayle Moses
198-761, 209-898
NW 1/4 of NW 1/4
37 Ac.

John & Clara Cavinee
200-771
NE 1/4 of NW 1/4 pt.
31.24 Ac.

Etta Hartshorn
149-13
NW 1/2 pt.
8.76 Ac.

Edward Cutler
202-113
54.078 Ac.
W 1/2 NE Pt.

Danny Demint
144-203
NE 1/4 NE 1/4
40.0 Ac.

119-173
5.00 Ac.
W / NW Pt.

119-173
SW 1/4 of NW 1/4 pt.
39.0 Ac.

Robert E. Jessberger
Total Acreage 71.66

119-173
SE 1/4 of NW 1/4 pt.
27.66 Ac.

Ronald & Marjorie Reed
181-511
6.868 Ac.

Christina Siemer
185-887, 2,055 Ac.

Marcia Siemer
185-888
2.5621 Ac.

Lisa Siemer
185-891
2.0448 Ac.

Monica Siemer
185-894
1.041 Ac.

Abbeyhills, Inc.
172-214
1.7 Ac.

John & Victoria Fraim
197-521
39.944 Ac.
SE NE Pt.

Suzanne M. Kennedy
147-699 .056 Ac.

219-333
217-154
N 1/2 of NW 1/4 of SW 1/4
20 Ac.

Dewey Bias
Tot. Ac. 78.90

Charles Stebelton & Patricia Hettinger
OR31-289

H. Rocky Marcum
OR22-948

219-333
217-154
S 1/2 of NW 1/4 of SW 1/4
20 Ac.

219-333
217-154
NE SW Pt.
33.90 Ac.

NW 1/4 of SE 1/4
40 Ac. *

NE SE Pt.
35 Ac.

John & Sandra Harr
189-262, 190-9,
134-289

212-408
5.00 Ac.
NW SW Pt.

John & Gleneth Kane

156-391
Lot 8 pt.
1.67 Ac.

Robert & Juanita Kane

129-33 *
Lot 8 B
SE SE Pts.
3.83 Ac.

Billy L. Hannah
139-438
SE SW Pt.
8.305 Ac.

1.10 Ac.

1.90 Ac.

William & Judith Simons
OR11-281,
122-463
SW 1/4 of SW 1/4
40 Ac.

Steven & Laura Scurlock
183-598
SE 1/4 SW 1/4 Pt.
10.20 Ac.

Irene Marcum
OR22-947

SW 1/4 of SE 1/4
40 Ac.

Allen & Flora Coovert
198-43
SE 1/4 of SE 1/4 Pt.
39.67 Ac. *

Robert & Virginia Short
119-570
SE SW Pt.
20.41 Ac.

SEC. 11