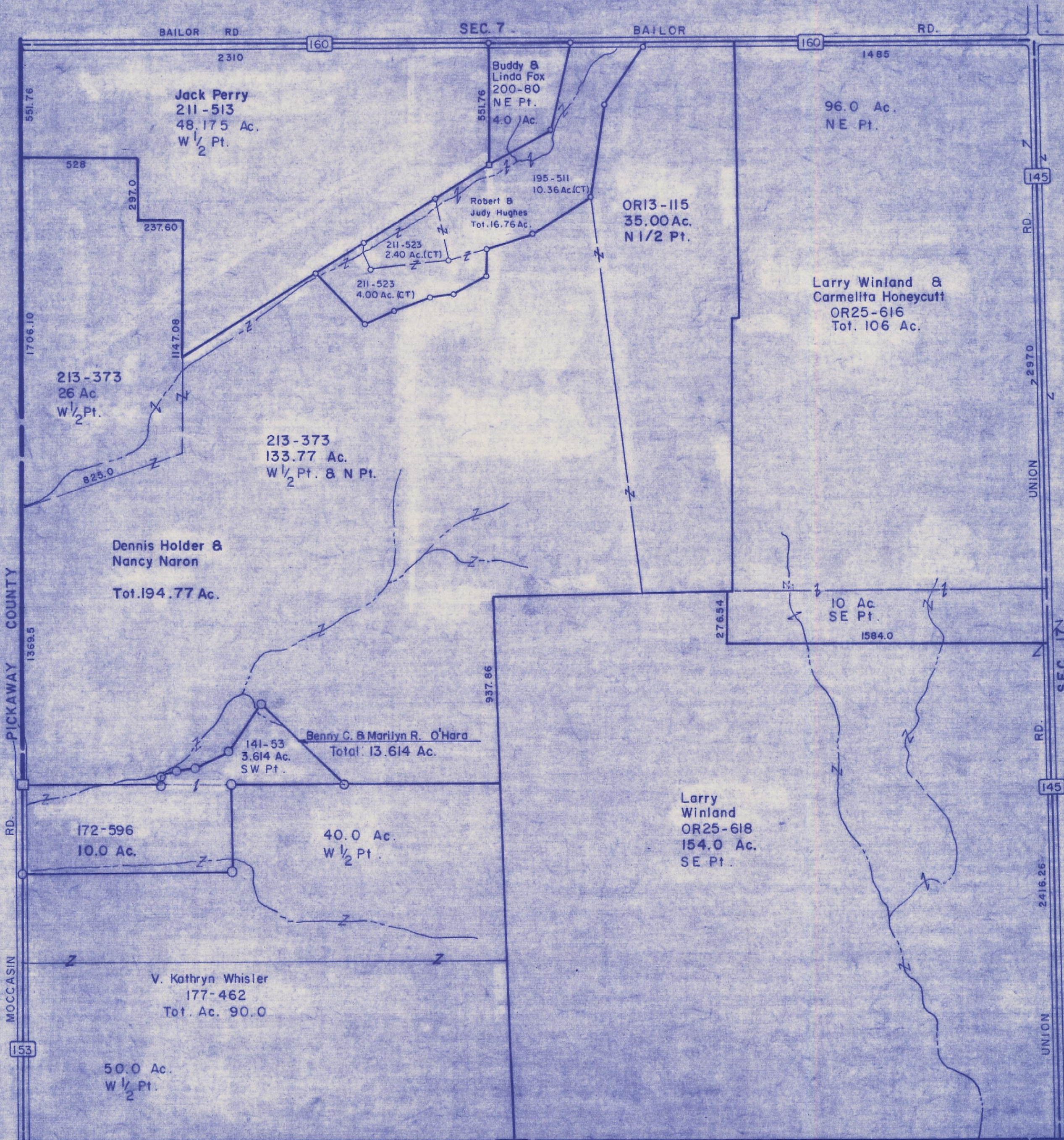


HOCKING COUNTY

SEC. 18 T.12 R.19

PERRY TWP.

Scale 1"=400'



PICKAWAY COUNTY
MOCCASIN RD.

RD. UNION RD. UNION RD. UNION RD.

153

145

145

2416.25

SEC. 19

SEC 18

BAILOR RD
2310
551.76
528
297.0
237.60
1147.08
1706.10
825.0
213-373
26 Ac
W 1/2 Pt.
1369.5
194.77 Ac.
Dennis Holder & Nancy Naron
Tot. 194.77 Ac.
141-53
3.614 Ac.
SW Pt.
Benny C. & Marilyn R. O'Hara
Total 13.614 Ac.
172-596
10.0 Ac.
40.0 Ac.
W 1/2 Pt.
937.86
276.54
10 Ac.
SE Pt.
1584.0
2416.25
145
216.25
145
50.0 Ac.
W 1/2 Pt.
177-462
Tot. Ac. 90.0
V. Kathryn Whisler
177-462
Tot. Ac. 90.0
50.0 Ac.
W 1/2 Pt.
211-513
48.175 Ac.
W 1/2 Pt.
Jack Perry
211-513
48.175 Ac.
W 1/2 Pt.
Buddy & Linda Fox
200-80
NE Pt.
4.0 Ac.
551.76
195-511
10.36 Ac.(CT)
Robert & Judy Hughes
Tot. 16.75 Ac.
211-523
2.40 Ac.(CT)
211-523
4.00 Ac.(CT)
OR13-115
35.00 Ac.
N 1/2 Pt.
96.0 Ac.
NE Pt.
1485
145
LARRY WINLAND & CARMELITA HONEYCUTT
OR25-616
Tot. 106 Ac.
LARRY WINLAND
OR25-618
154.0 Ac.
SE Pt.