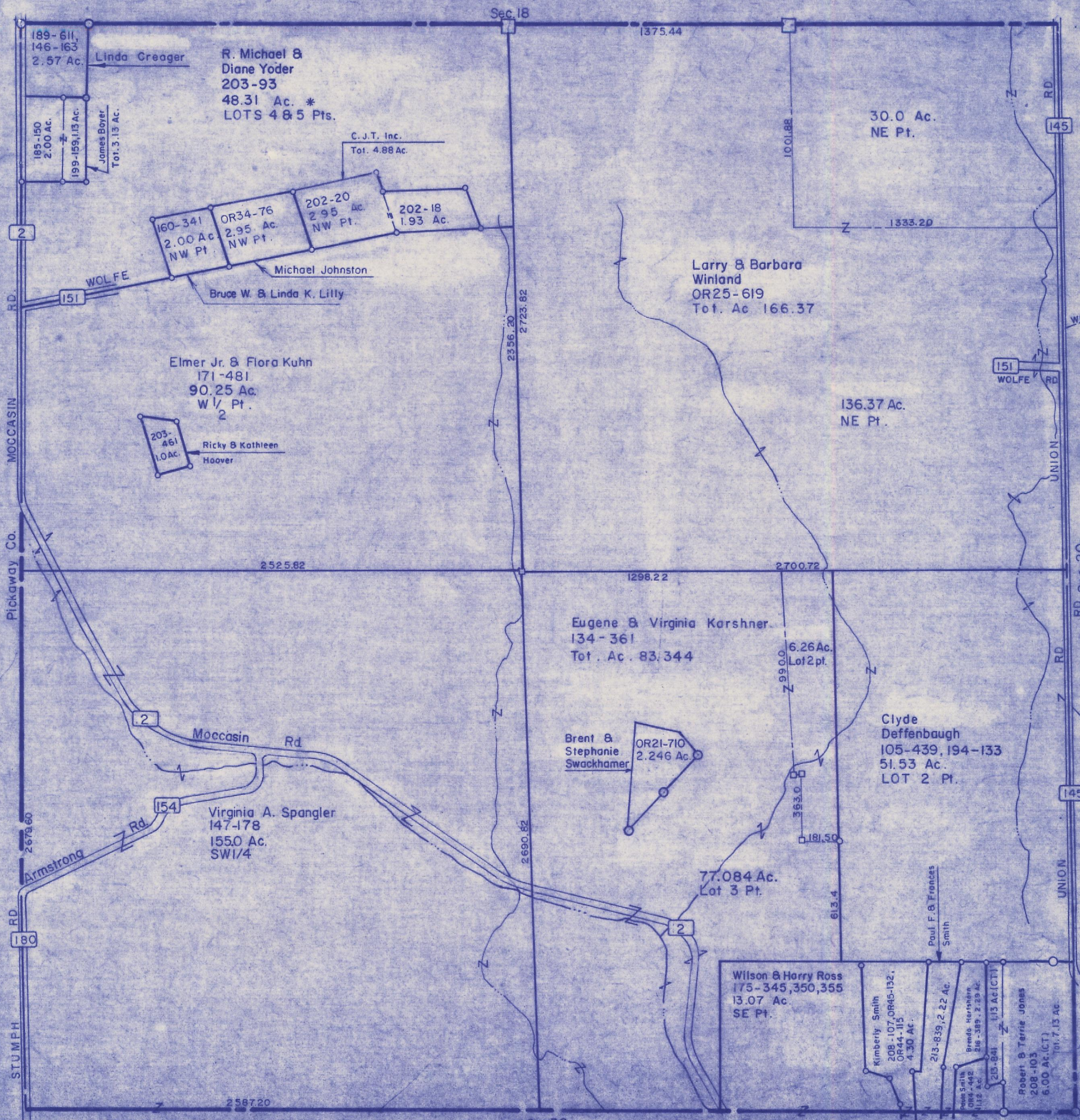


# HOCKING COUNTY

Sec. 19 T12 R19

PERRY TWP

Scale = 1" = 400'



189-611,  
146-163  
2.57 Ac. Linda Creager

185-150  
2.00 Ac.  
199-159, 113 Ac.  
James Boyer  
Tot. 3.13 Ac.

R. Michael &  
Diane Yoder  
203-93  
48.31 Ac. \*  
LOTS 4 & 5 Pts.

C. J. T. Inc.  
Tot. 4.88 Ac.

160-341  
2.00 Ac  
NW Pt.

OR34-76  
2.95 Ac.  
NW Pt.

202-20  
2.95 Ac.  
NW Pt.

202-18  
1.93 Ac.

Michael Johnston  
Bruce W. & Linda K. Lilly

30.0 Ac.  
NE Pt.

Larry & Barbara  
Winland  
OR25-619  
Tot. Ac. 166.37

Elmer Jr. & Flora Kuhn  
171-481  
90.25 Ac.  
W 1/4  
2

203-  
461  
1.0 Ac.

Ricky & Kathleen  
Hoover

136.37 Ac.  
NE Pt.

2525.82

1298.22

2700.72

Eugene & Virginia Karshner  
134-361  
Tot. Ac. 83.344

6.26 Ac.  
Lot 2 Pt.

Brent &  
Stephanie  
Swackhamer  
OR21-710  
2.246 Ac.

Clyde  
Deffenbaugh  
105-439, 194-133  
51.53 Ac.  
LOT 2 Pt.

Virginia A. Spangler  
147-178  
155.0 Ac.  
SW 1/4

77.084 Ac.  
Lot 3 Pt.

Wilson & Harry Ross  
175-345, 350, 355  
13.07 Ac.  
SE Pt.

Kimberly Smith  
208-107, OR45-132,  
OR44-115  
4.30 Ac.

Paul F. & Frances  
Smith  
213-839, 2.22 Ac.

Brenda Harshorn  
216-389, 2.29 Ac.  
1112 Ac.

Robert & Terrie Jones  
208-103  
5.00 Ac. (CT)  
Tot. 7.13 Ac.

## Sec. 19