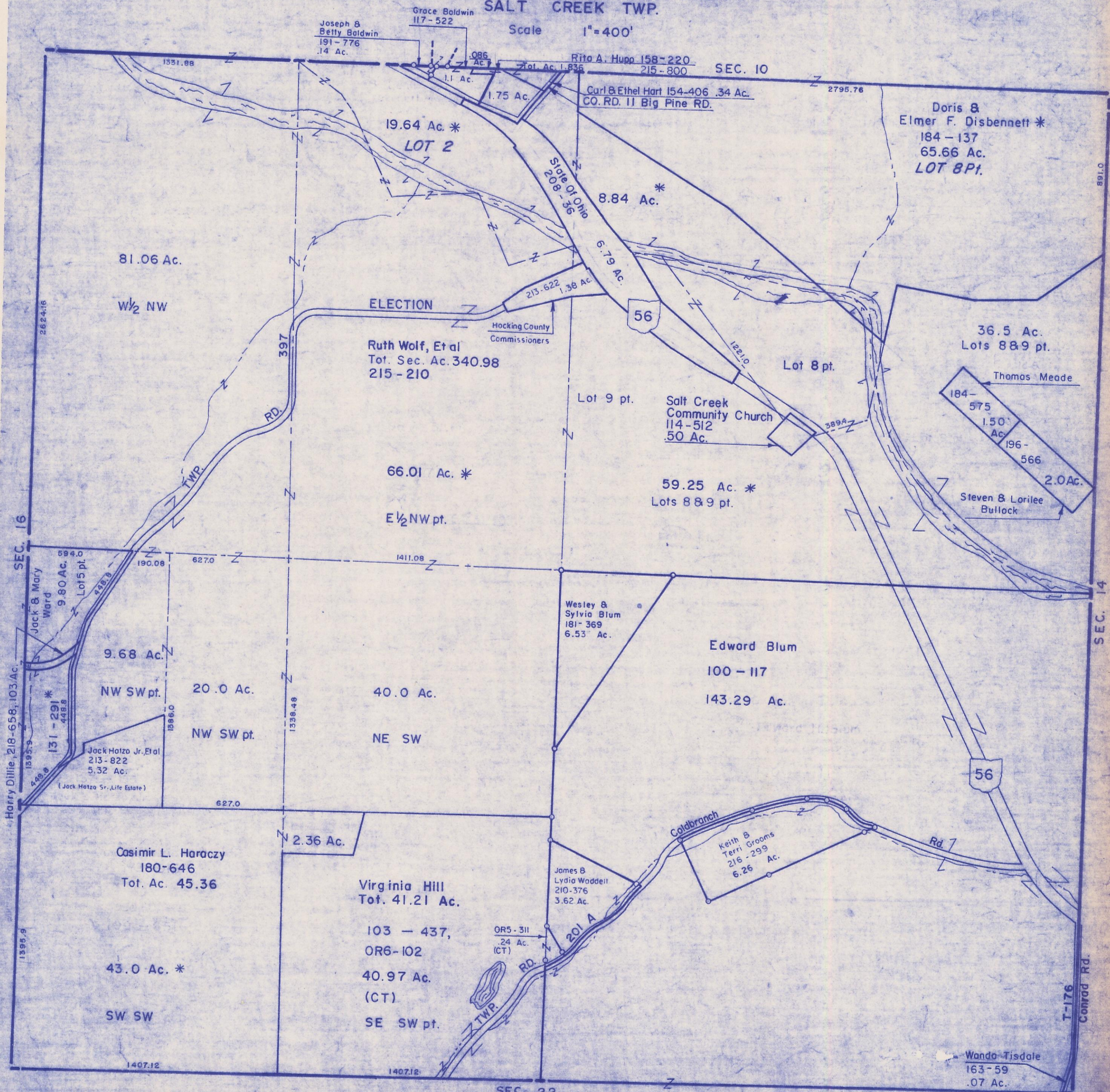


HOCKING COUNTY

Sec.15 T11 R19

SALT CREEK TWP.

Scale 1"=400'



SEC. 15

81.06 Ac.

W $\frac{1}{2}$  NW

19.64 Ac. \*  
LOT 2

SEC. 10

Doris & Elmer F. Disbennett \*  
184 - 137  
65.66 Ac.  
LOT 8 pt.

ELECTION

Ruth Wolf, Et al  
Tot. Sec. Ac. 340.98  
215 - 210

Hocking County Commissioners

56

Lot 8 pt.

36.5 Ac.  
Lots 8 & 9 pt.

Thomas Meade

Salt Creek Community Church  
114 - 512  
50 Ac.

Lot 9 pt.

184 - 575  
1.50 Ac.  
196 - 566  
2.0 Ac.  
Steven & Lorilee Bullock

66.01 Ac. \*

E $\frac{1}{2}$  NW pt.

59.25 Ac. \*  
Lots 8 & 9 pt.

SEC. 16

9.68 Ac. N

NW SW pt.

20.0 Ac.

40.0 Ac.

NE SW

Edward Blum

100 - 117

143.29 Ac.

Harry Dillie, 218-658, 103 Ac.

Jack Halzo Jr., Et al  
213 - 822  
5.32 Ac.  
(Jack Halzo Sr., Life Estate)

Casimir L. Haraczy  
180 - 646  
Tot. Ac. 45.36

43.0 Ac. \*

SW SW

Virginia Hill  
Tot. 41.21 Ac.

103 - 437,  
OR6-102

40.97 Ac.  
(CT)

SE SW pt.

Wesley & Sylvia Blum  
181 - 369  
6.53 Ac.

James B. Lydia Waddell  
210 - 376  
3.62 Ac.

Keith & Terri Grooms  
216 - 299  
6.26 Ac.

Wanda Tisdale  
163 - 59  
.07 Ac.

SEC. 22

SEC. 14

T-176  
Conrad Rd.