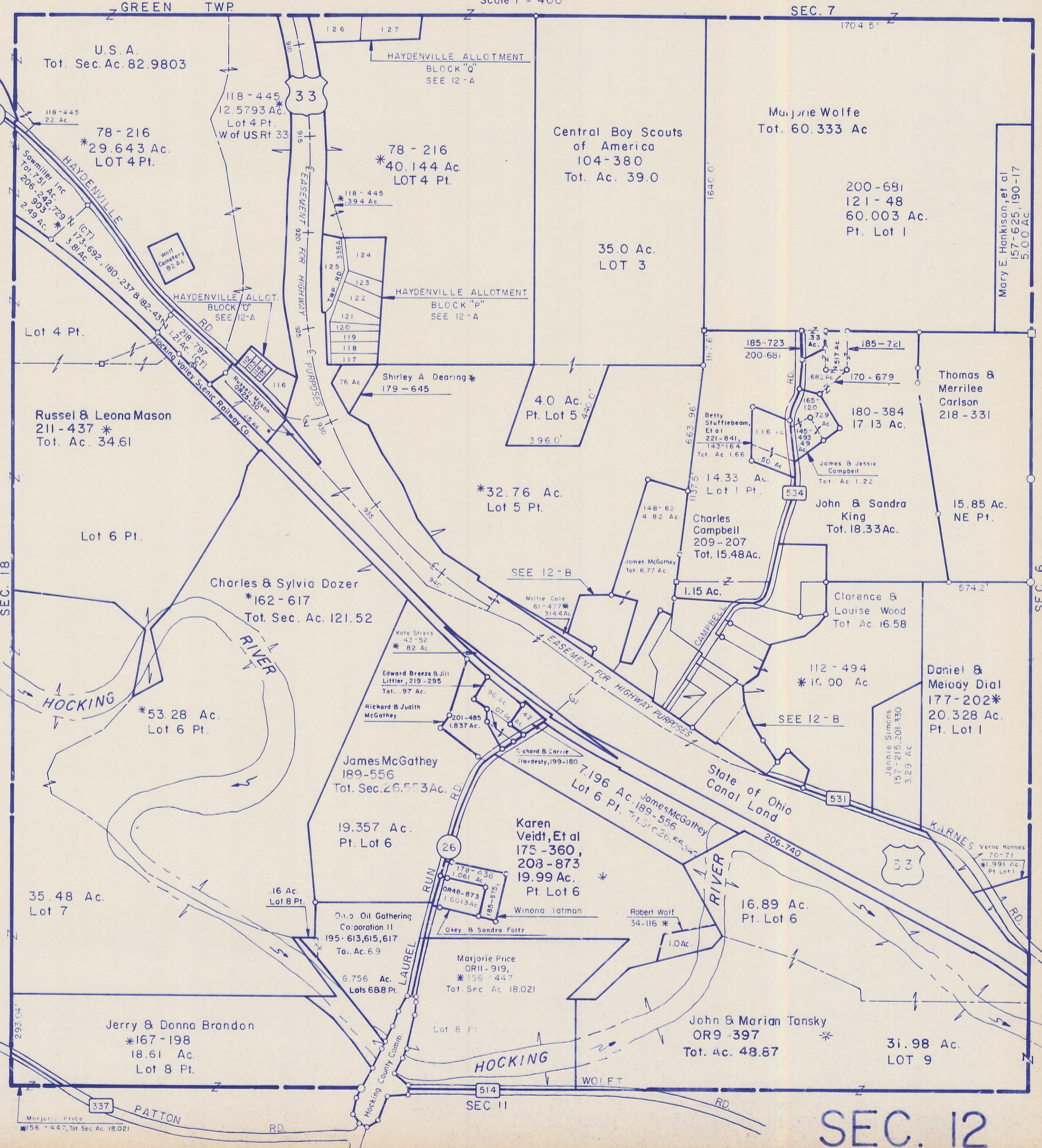


HOCKING COUNTY

STARR TWP.

SEC. 12 T12 R16

Scale 1" = 400'



U.S.A.  
Tot. Sec. Ac. 82.9803

HAYDENVILLE ALLOTMENT  
BLOCK "Q"  
SEE 12-A

Marjorie Wolfe  
Tot. 60.333 Ac

78-216  
\*29.643 Ac.  
LOT 4 Pt.

78-216  
\*40.144 Ac.  
LOT 4 Pt.

Central Boy Scouts  
of America  
104-380  
Tot. Ac. 39.0

200-681  
121-48  
60.003 Ac.  
Pt. Lot 1

Russel & Leona Mason  
211-437 \*  
Tot. Ac. 34.61

Shirley A Dearing \*  
179-645

35.0 Ac.  
LOT 3

Thomas &  
Merrilee  
Carlson  
218-331

Lot 6 Pt.

Charles & Sylvia Dozer  
\*162-617  
Tot. Sec. Ac. 121.52

\*32.76 Ac.  
Lot 5 Pt.

Charles  
Campbell  
209-207  
Tot. 15.48 Ac.

John & Sandra  
King  
Tot. 18.33 Ac.

15.85 Ac.  
NE Pt.

\*53.28 Ac.  
Lot 6 Pt.

James McGathey  
189-556  
Tot. Sec. 26.553 Ac.

Karen  
Veidt, Et al  
175-360,  
203-873  
19.99 Ac. \*  
Pt. Lot 6

Clarence &  
Louise Wood  
Tot. Ac. 16.58

Daniel &  
Meiody Dial  
177-202 \*  
20.328 Ac.  
Pt. Lot 1

35.48 Ac.  
Lot 7

19.357 Ac.  
Pt. Lot 6

Winona Tatman

Robert Wolf  
34-116 \*

16.89 Ac.  
Pt. Lot 6

Jerry & Donna Brandon  
\*167-198  
18.61 Ac.  
Lot 8 Pt.

Marjorie Price  
OR11-919,  
\*156-447  
Tot. Sec. Ac. 18.021

John & Marian Tansky  
OR9-397  
Tot. Ac. 48.87

31.98 Ac.  
LOT 9

Marjorie Price  
\*156-447, Tot. Sec. Ac. 18.021

SEC. 12