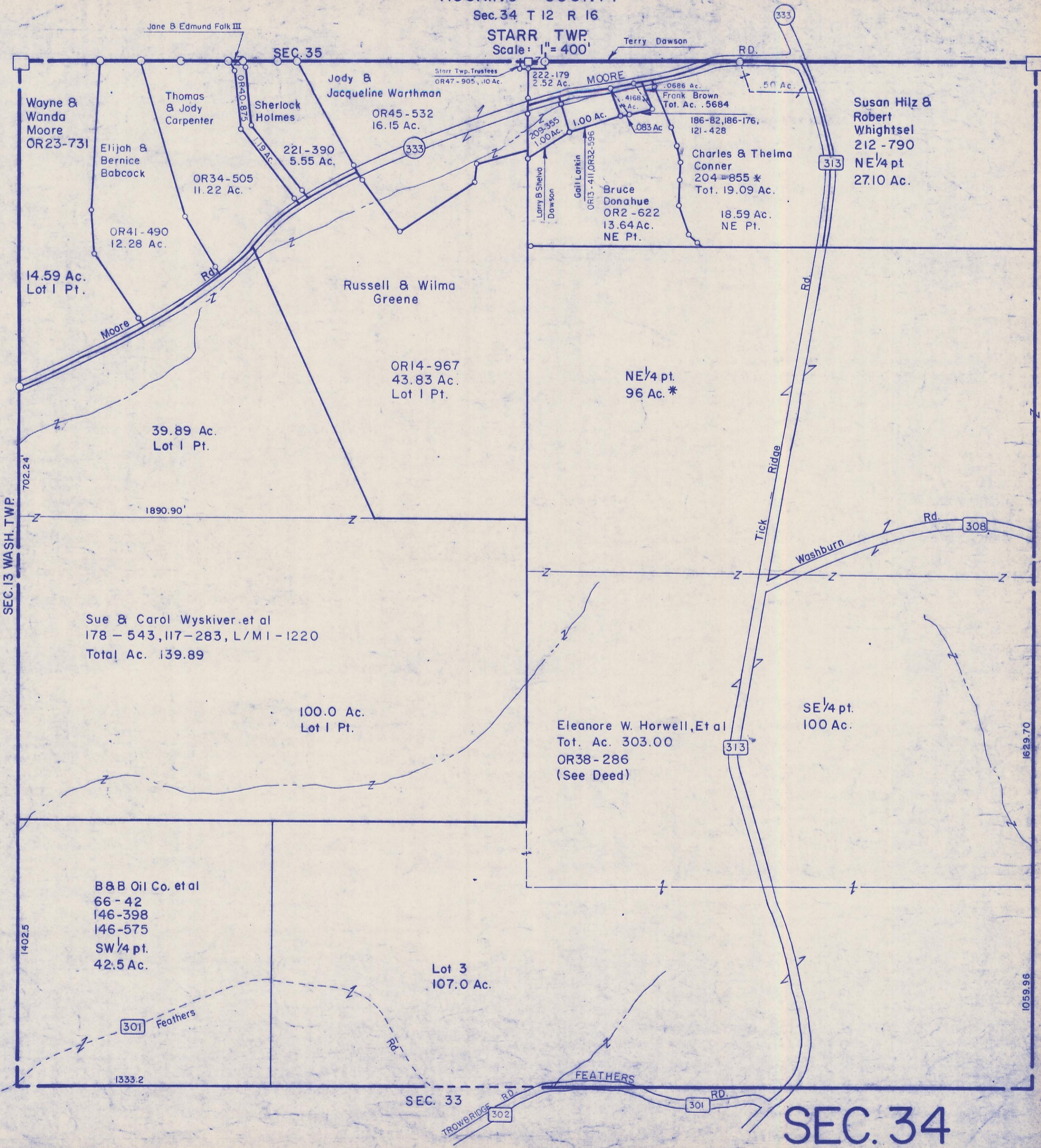


HOCKING COUNTY

Sec. 34 T 12 R 16

STARR TWP.

Scale: 1" = 400'



Wayne & Wanda Moore
OR23-731

Elijah & Bernice Babcock

OR41-490
12.28 Ac.

14.59 Ac.
Lot I Pt.

Thomas & Jody Carpenter

OR34-505
11.22 Ac.

39.89 Ac.
Lot I Pt.

Sue & Carol Wiskiver, et al
178-543, 117-283, L/M I-1220
Total Ac. 139.89

100.0 Ac.
Lot I Pt.

B & B Oil Co. et al
66-42
146-398
146-575
SW 1/4 pt.
42.5 Ac.

Lot 3
107.0 Ac.

Jody & Jacqueline Warthman
OR45-532
16.15 Ac.

Sherlock Holmes

221-390
5.55 Ac.

Russell & Wilma Greene

OR14-967
43.83 Ac.
Lot I Pt.

222-179
2.52 Ac.

209-355
1.00 Ac.

1.00 Ac.

Larry B. Shelvo Dawson

Gail Larkin
OR13-411, OR32-596

Bruce Donahue
OR2-622
13.64 Ac.
NE Pt.

NE 1/4 pt.
96 Ac. *

Eleanore W. Horwell, Et al
Tot. Ac. 303.00
OR38-286
(See Deed)

Frank Brown
Tot. Ac. .5684

.0686 Ac.

.083 Ac.

186-82, 186-176,
121-428

Charles & Thelma Conner
204-855 *
Tot. 19.09 Ac.

18.59 Ac.
NE Pt.

Susan Hiltz & Robert Whightsel
212-790
NE 1/4 pt.
27.10 Ac.

SEC. 34