

HOCKING COUNTY

WARD TWP

SEC. 25 T13 R15

Scale 1"=400'

Sec. 26

3823.38'

Paul Lash 218-877, 139-491*
20.212 Ac.

Charles Stowe, et al
161-686
1.7 Ac.

Merril & Darlene
Lenning 153-591
1.42 Ac.

Matthew B Shelly
Lanning
1.0 Ac.

Lots 2, 3 & 6 Pts.
90-613
241.830 Ac.

278

387 C

United States of America
Total: 450.279 Ac.

102-8
20.50 Ac.

73-436
15.15 Ac.

*102-8
14.16 Ac.

Roy E. Keiffer
130-413
1.51 Ac.

Christy
Cunningham
218-515

387 B

92-574 4.139 Ac.

23.75 Ac.
Lot 3 pt.

Ruth Lucille Nelson
122-70
12.77 Ac.
Lot 3 pt.

Victoria B Arthur
Davis 79-568
.06 Ac.

Sec. 19

Jerry & Mary
Teal

1.0 Ac.
220-889

Charlene Jones et al
*187-787
Tot. 128.62 Ac.

104.87 Ac.
Lot 3 pt.

Jim B Jamie Wallace
208-657
.52 Ac.

Ronnie Wend
209-221
.42 Ac.

James B Roberto
Wend, 108-37
.25 Ac.

David Shears
OR34-476
1.59 Ac.

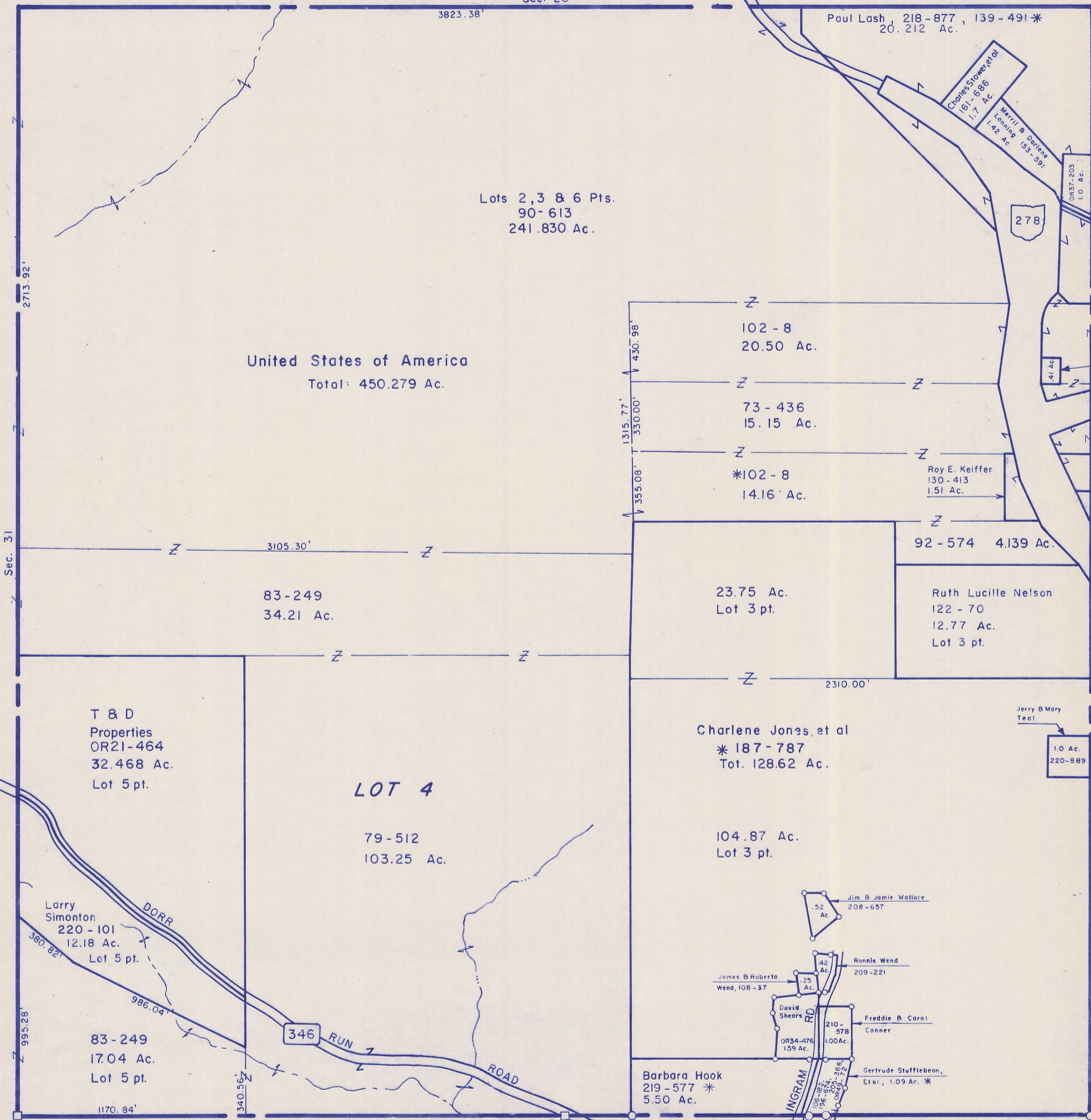
Freddie & Carol
Conner
210-578
1.00 Ac.

Barbara Hook
219-577*
5.50 Ac.

Gertrude Stufflebeon,
Et al, 1.09 Ac. *

INGRAM RD
342

Sec. 25



York Twp.

Athens Co.

Sec. 31

2713.92'

995.28'

83-249
17.04 Ac.
Lot 5 pt.

T & D
Properties
OR21-464
32.468 Ac.
Lot 5 pt.

Larry
Simonton
220-101
12.18 Ac.
Lot 5 pt.

83-249
17.04 Ac.
Lot 5 pt.

1170.84'

340.56'

3105.30'

83-249
34.21 Ac.

LOT 4

79-512
103.25 Ac.

346 RUN

ROAD

1315.77'
430.98'
330.00'
355.08'

2310.00'

Sec. 19