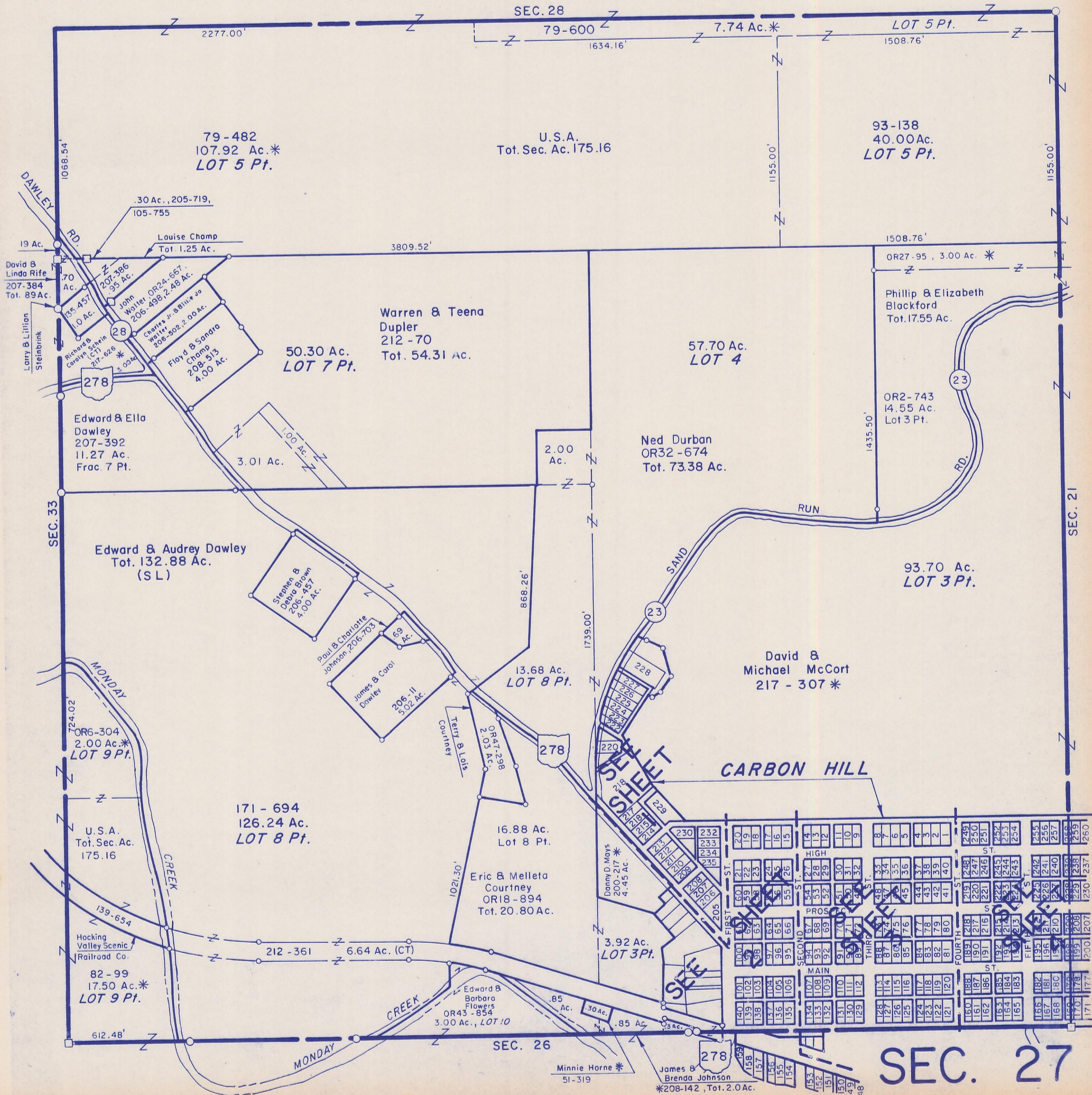


HOCKING COUNTY

WARD TWP.

SEC. 27 T13 R15

Scale 1"=400'



79-482  
107.92 Ac.\*  
LOT 5 Pt.

U.S.A.  
Tot. Sec. Ac. 175.16

93-138  
40.00 Ac.  
LOT 5 Pt.

50.30 Ac.  
LOT 7 Pt.

Warren & Teena  
Dupler  
212-70  
Tot. 54.31 Ac.

57.70 Ac.  
LOT 4

Ned Durban  
OR32-674  
Tot. 73.38 Ac.

OR2-743  
14.55 Ac.  
Lot 3 Pt.

93.70 Ac.  
LOT 3 Pt.

David &  
Michael McCort  
217-307\*

171-694  
126.24 Ac.  
LOT 8 Pt.

13.68 Ac.  
LOT 8 Pt.

Eric & Melleta  
Courtney  
OR18-894  
Tot. 20.80 Ac.

3.92 Ac.  
LOT 3 Pt.

82-99  
17.50 Ac.\*  
LOT 9 Pt.

SEC. 26

SEC. 27

Minnie Horne \*  
51-319

James &  
Brenda Johnson  
\*208-142, Tot. 2.0 Ac.