

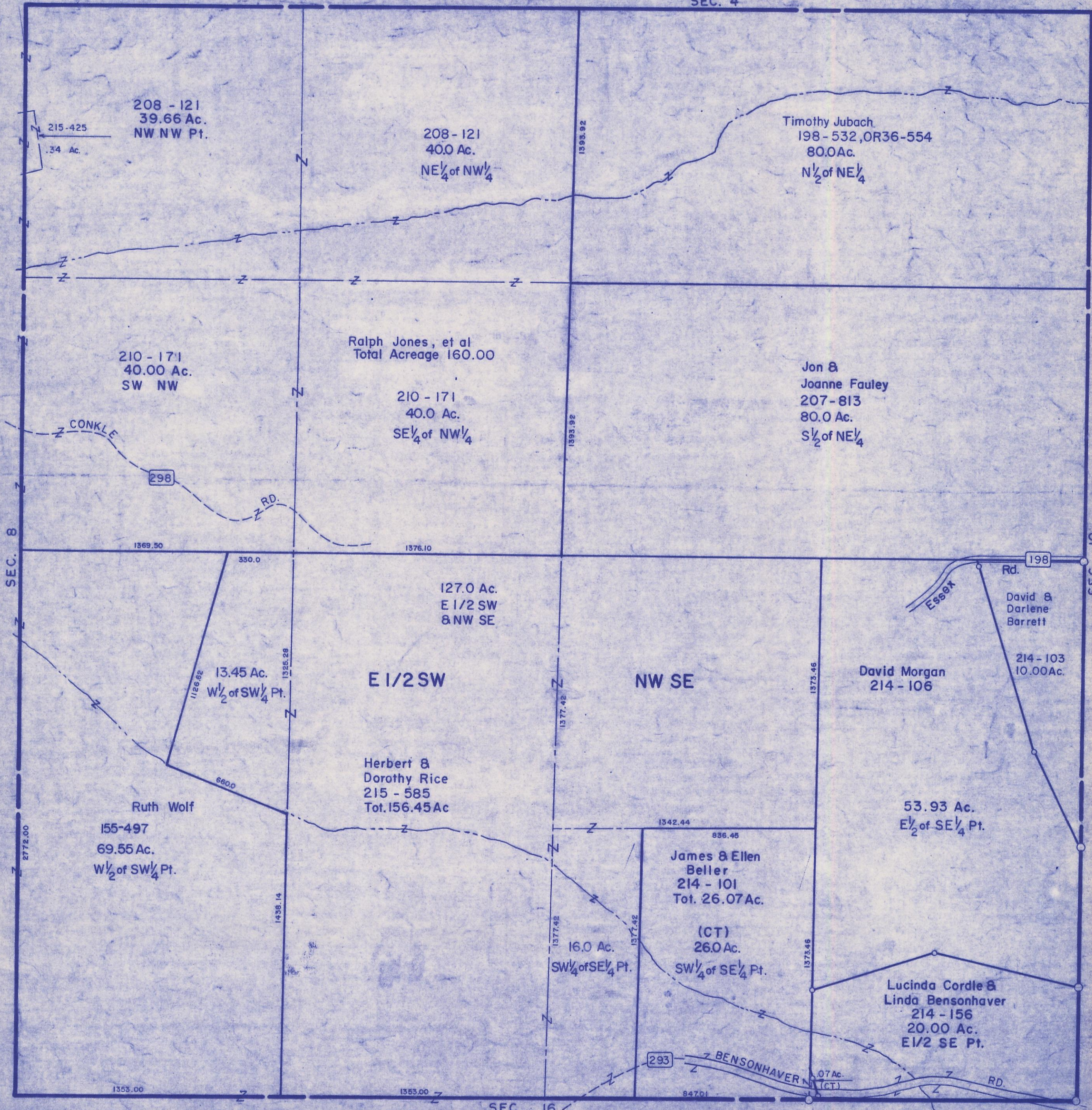
HOCKING COUNTY

Sec. 9 T13 R17

WASHINGTON TWP.

Scale 1"=400'

SEC. 4



208 - 121
39.66 Ac.
NW NW Pt.

208 - 121
40.0 Ac.
NE 1/4 of NW 1/4

Timothy Jubach
198 - 532, OR36-554
80.0 Ac.
N 1/2 of NE 1/4

210 - 171
40.00 Ac.
SW NW

Ralph Jones, et al
Total Acreage 160.00

210 - 171
40.0 Ac.
SE 1/4 of NW 1/4

Jon &
Joanne Fauley
207 - 813
80.0 Ac.
S 1/2 of NE 1/4

127.0 Ac.
E 1/2 SW
& NW SE

E 1/2 SW

NW SE

David &
Darlene
Barrett

214 - 103
10.00 Ac.

David Morgan
214 - 106

53.93 Ac.
E 1/2 of SE 1/4 Pt.

Ruth Wolf
155-497
69.55 Ac.
W 1/2 of SW 1/4 Pt.

Herbert &
Dorothy Rice
215 - 585
Tot. 156.45 Ac.

James & Ellen
Beller
214 - 101
Tot. 26.07 Ac.

(CT)
26.0 Ac.
SW 1/4 of SE 1/4 Pt.

Lucinda Cordle &
Linda Bensonhaver
214 - 156
20.00 Ac.
E 1/2 SE Pt.

SEC. 9