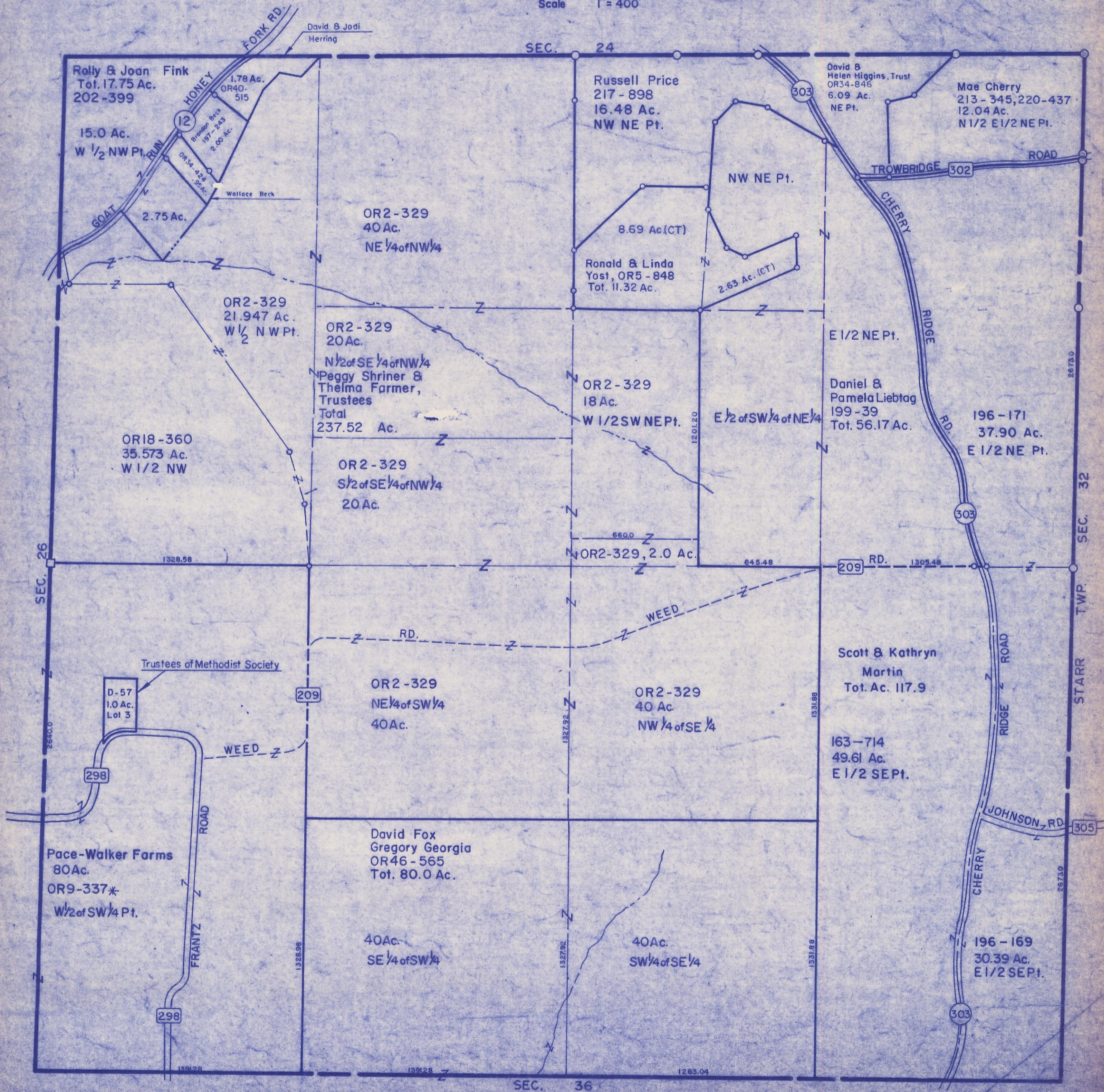


HOCKING COUNTY

Sec. 25 T 13 R 17

WASHINGTON TWP.

Scale 1" = 400'



Rolly & Joan Fink  
Tot. 17.75 Ac.  
202-399

15.0 Ac.

W 1/2 NW Pt.

1.78 Ac.

OR40-515

Wallace Beck

1.97-2.43

2.60 Ac.

OR34-424

OR34-424

2.75 Ac.

OR2-329

40 Ac.

NE 1/4 of NW 1/4

OR2-329

21.947 Ac.

W 1/2 NW Pt.

OR2-329

20 Ac.

N 1/2 of SE 1/4 of NW 1/4

Peggy Shriner & Thelma Farmer, Trustees

Total

237.52 Ac.

OR2-329

20 Ac.

S 1/2 of SE 1/4 of NW 1/4

OR18-360

35.573 Ac.

W 1/2 NW

OR2-329

40 Ac.

NE 1/4 of SW 1/4

OR2-329

2.0 Ac.

W 1/2 SW NE Pt.

Russell Price

217-898

16.48 Ac.

NW NE Pt.

8.69 Ac. (CT)

Ronald & Linda Yost, OR5-848

Tot. 11.32 Ac.

OR2-329

18 Ac.

W 1/2 SW NE Pt.

OR2-329, 2.0 Ac.

OR2-329

40 Ac.

NW 1/4 of SE 1/4

OR2-329

40 Ac.

NE 1/4 of SW 1/4

David Fox

Gregory Georgia

OR46-565

Tot. 80.0 Ac.

40 Ac.

SE 1/4 of SW 1/4

40 Ac.

SW 1/4 of SE 1/4

David B. Helen Higgins, Trust

OR34-846

6.09 Ac.

NE Pt.

Mae Cherry

213-345, 220-437

12.04 Ac.

N 1/2 E 1/2 NE Pt.

Daniel & Pamela Liebtog

199-39

Tot. 56.17 Ac.

196-171

37.90 Ac.

E 1/2 NE Pt.

Scott & Kathryn Martin

Tot. Ac. 117.9

163-714

49.61 Ac.

E 1/2 SE Pt.

Pace-Walker Farms

80 Ac.

OR9-337\*

W 1/2 of SW 1/4 Pt.

40 Ac.

SE 1/4 of SW 1/4

196-169

30.39 Ac.

E 1/2 SE Pt.

SEC. 25