

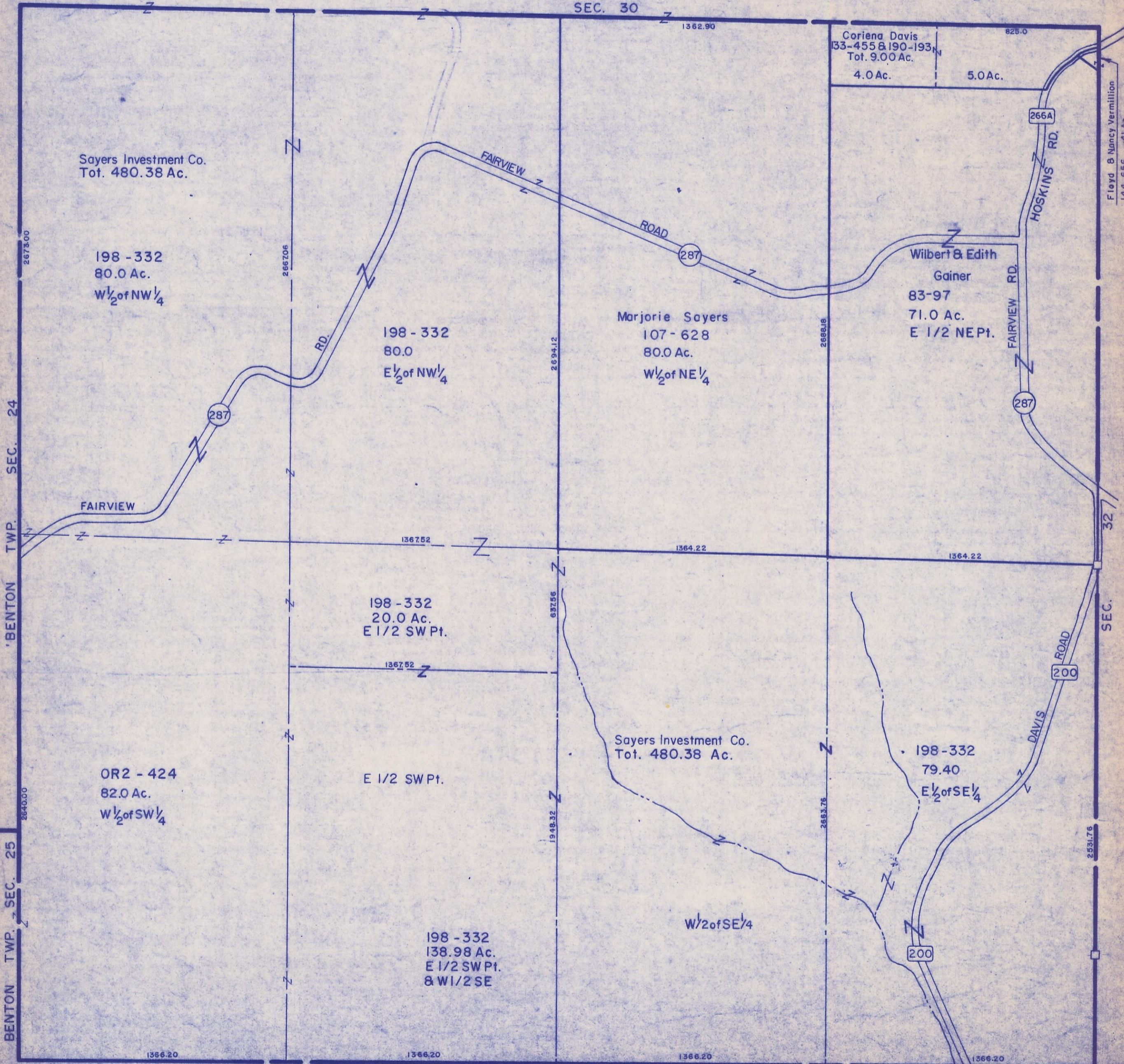
HOCKING COUNTY

Sec. 31 T 13 R 17

WASHINGTON TWP.

Scale 1"=400'

SEC. 30



Sayers Investment Co.
Tot. 480.38 Ac.

198 - 332
80.0 Ac.
W 1/2 of NW 1/4

198 - 332
80.0
E 1/2 of NW 1/4

Marjorie Sayers
107 - 628
80.0 Ac.
W 1/2 of NE 1/4

Wilbert & Edith
Gainer
83-97
71.0 Ac.
E 1/2 NE Pt.

Coriena Davis
133-455 & 190-193
Tot. 9.00 Ac.
4.0 Ac. 5.0 Ac.

Floyd & Nancy Vermillion
144-656, 141 Ac.

198 - 332
20.0 Ac.
E 1/2 SW Pt.

OR2 - 424
82.0 Ac.
W 1/2 of SW 1/4

E 1/2 SW Pt.

Sayers Investment Co.
Tot. 480.38 Ac.

198 - 332
79.40
E 1/2 of SE 1/4

198 - 332
138.98 Ac.
E 1/2 SW Pt.
& W 1/2 SE

W 1/2 of SE 1/4

VIN. CO.

SEC. 6

SWAN TWP.

SEC. 5

SEC. 31