

HOCKING COUNTY

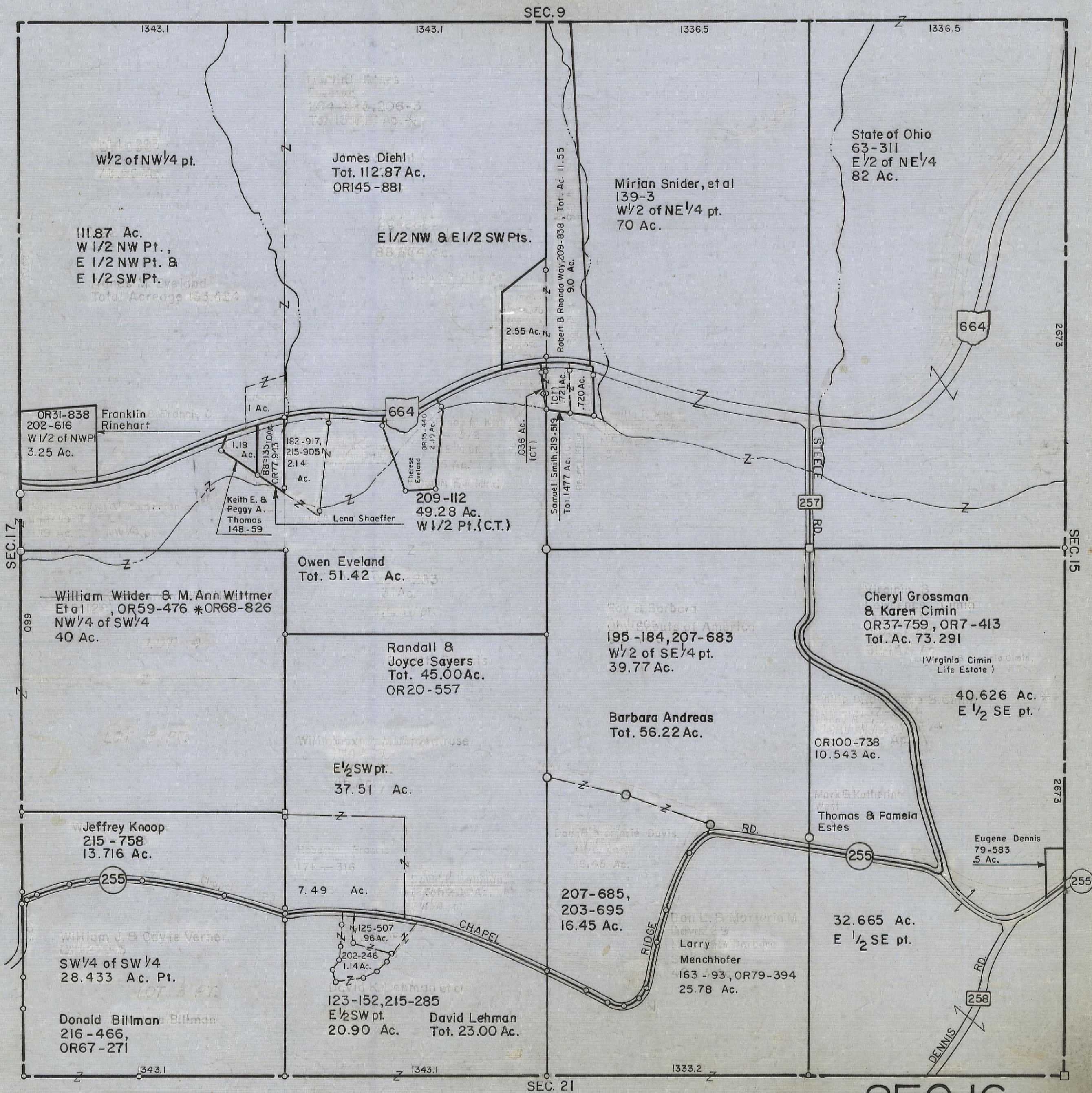
Sec. 16 T11 R18

BENTON TWP.

Scale: 1"=400'

4-5-00

Page 13



SEC. 16

SEC. 21

SEC. 15

SEC. 17

SEC. 9

111.87 Ac.
W 1/2 NW Pt.,
E 1/2 NW Pt. &
E 1/2 SW Pt.
Total Acreage 163.624

James Diehl
Tot. 112.87 Ac.
ORI45-881

Mirian Snider, et al
139-3
W 1/2 of NE 1/4 pt.
70 Ac.

State of Ohio
63-311
E 1/2 of NE 1/4
82 Ac.

E 1/2 NW & E 1/2 SW Pts.
88.804 Ac.

OR31-838
202-616
W 1/2 of NW Pt.
3.25 Ac.

Franklin Rinehart

Keith E. & Peggy A. Thomas
148-59

182-917, 215-905
2.14 Ac.

Lena Shaeffer

209-112
49.28 Ac.
W 1/2 Pt. (C.T.)

Owen Eveland
Tot. 51.42 Ac.

William Wilder & M. Ann Wittmer
Et al, OR59-476 *OR68-826
NW 1/4 of SW 1/4
40 Ac.

Randall & Joyce Sayers
Tot. 45.00 Ac.
OR20-557

195-184, 207-683
W 1/2 of SE 1/4 pt.
39.77 Ac.

Barbara Andreas
Tot. 56.22 Ac.

Cheryl Grossman & Karen Cimin
OR37-759, OR7-413
Tot. Ac. 73.291

40.626 Ac.
E 1/2 SE pt.

Jeffrey Knoop
215-758
13.716 Ac.

William J. & Gayle Verner
SW 1/4 of SW 1/4
28.433 Ac. Pt.

Donald Billman
216-466,
OR67-271

125-507
96 Ac.
202-246
1.14 Ac.

123-152, 215-285
E 1/2 SW pt. David Lehman
20.90 Ac. Tot. 23.00 Ac.

207-685,
203-695
16.45 Ac.

Don L. & Marjorie M. Davis
Larry Menchhofer
163-93, OR79-394
25.78 Ac.

32.665 Ac.
E 1/2 SE pt.

Eugene Dennis
79-583
.5 Ac.