

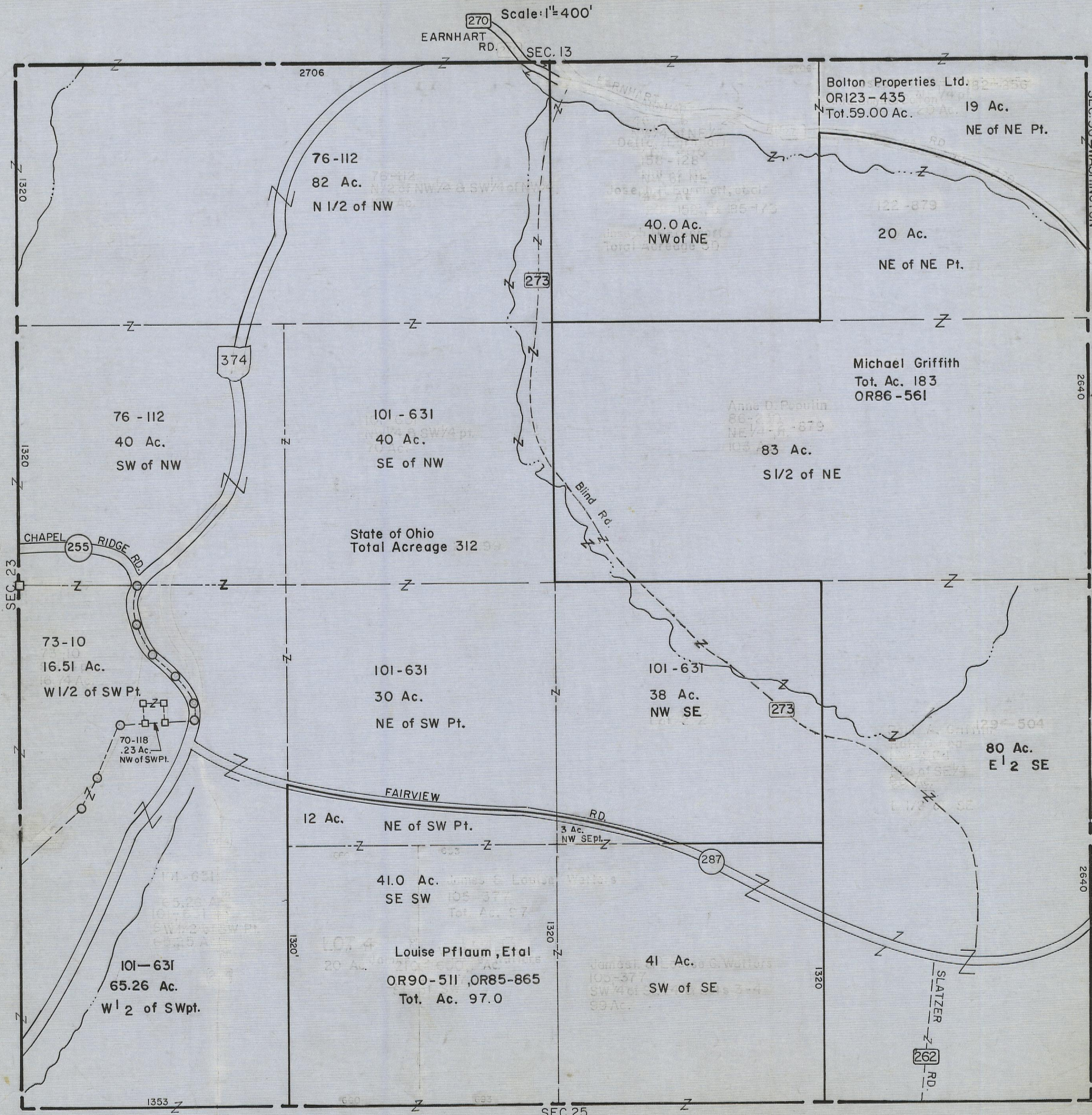
4-5-00

HOCKING COUNTY

Sec. 24 T11 R 18

BENTON TWP.

Scale: 1" = 400'



Bolton Properties Ltd.
 OR123-435
 Tot. 59.00 Ac.
 19 Ac.
 NE of NE Pt.

76-112
 82 Ac.
 N 1/2 of NW

40.0 Ac.
 NW of NE

122-879
 20 Ac.
 NE of NE Pt.

Michael Griffith
 Tot. Ac. 183
 OR86-561

76-112
 40 Ac.
 SW of NW

101-631
 40 Ac.
 SE of NW

83 Ac.
 S 1/2 of NE

State of Ohio
 Total Acreage 312

73-10
 16.51 Ac.
 W 1/2 of SW Pt.

101-631
 30 Ac.
 NE of SW Pt.

101-631
 38 Ac.
 NW SE

80 Ac.
 E 1/2 SE

101-631
 65.26 Ac.
 W 1/2 of SW Pt.

41.0 Ac.
 SE SW

Louise Pflaum, Etal
 OR90-511, OR85-865
 Tot. Ac. 97.0

41 Ac.
 SW of SE

SEC. 24