

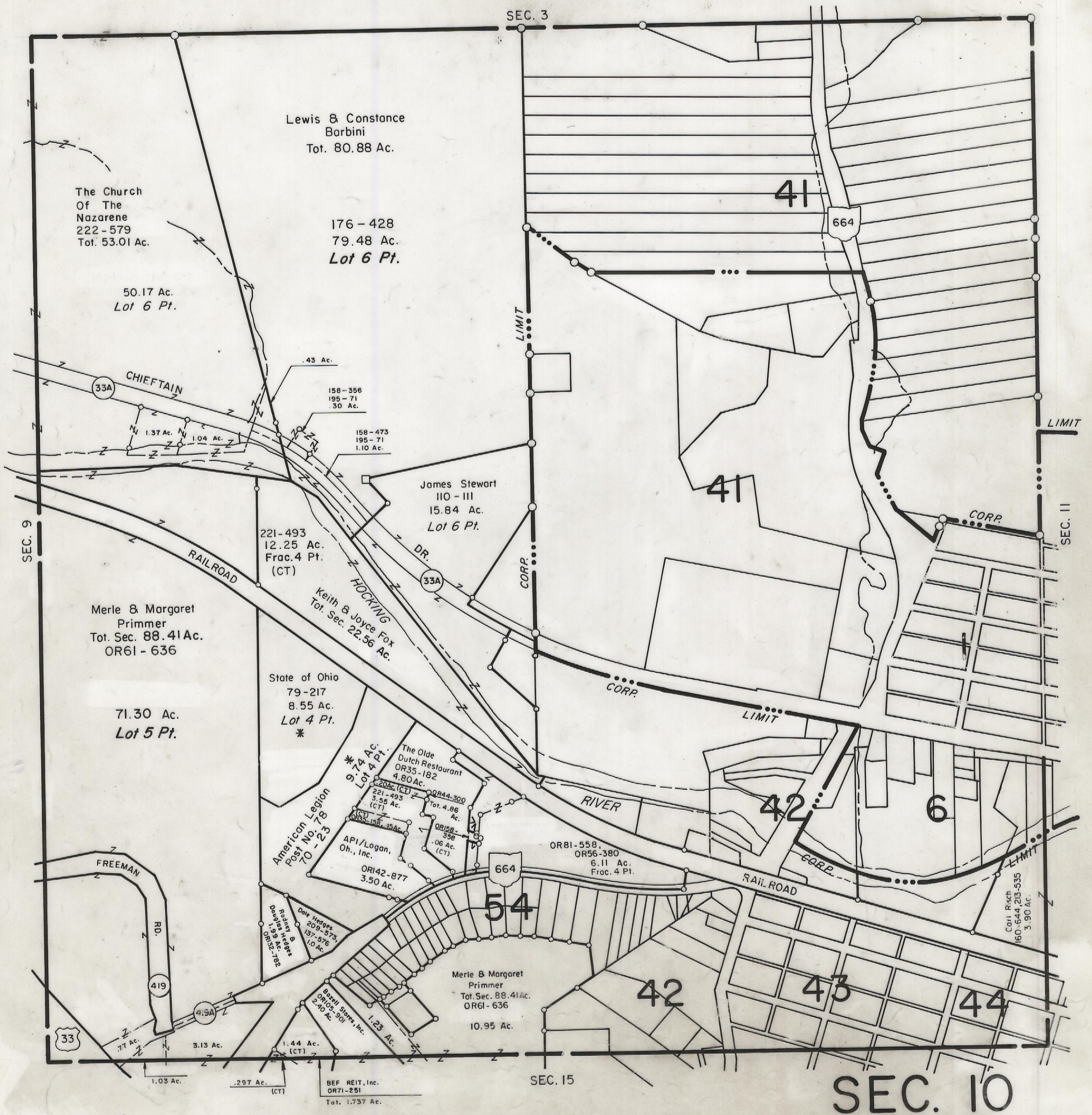
4-5-00

# HOCKING COUNTY

Sec. 10 T14 R17

## FALLS TWP.

Scale 1" = 400'



Lewis & Constance  
Barbini  
Tot. 80.88 Ac.

The Church  
Of The  
Nazarene  
222 - 579  
Tot. 53.01 Ac.

176 - 428  
79.48 Ac.  
Lot 6 Pt.

50.17 Ac.  
Lot 6 Pt.

33A CHIEFTAIN

.43 Ac.  
158-356  
195-71  
.30 Ac.

158-473  
195-71  
1.10 Ac.

James Stewart  
110 - III  
15.84 Ac.  
Lot 6 Pt.

221-493  
12.25 Ac.  
Frac. 4 Pt.  
(CT)

Keith & Joyce Fox  
Tot. Sec. 22.56 Ac.

Merle & Margaret  
Primmer  
Tot. Sec. 88.41 Ac.  
OR61 - 636

71.30 Ac.  
Lot 5 Pt.

State of Ohio  
79-217  
8.55 Ac.  
Lot 4 Pt.  
\*

The Olde  
Dutch Restaurant  
OR35-182  
4.80 Ac.

221-493  
3.55 Ac.  
(CT)

OR44-300  
Tot. 4.96  
Ac.

OR34-156, 35 Ac.

API/Logan,  
Oh., Inc.  
ORI42-877  
3.50 Ac.

OR158-358  
.06 Ac.  
(CT)

OR81-558,  
OR56-380  
6.11 Ac.  
Frac. 4 Pt.

FREEMAN  
RD.

American Legion  
Post No. 78  
70 - 23

Dale Hedges  
209-575,  
137-576  
1.0 Ac.

Rodney B.  
Douglas  
158-227-788  
1.56 Ac.

Dale Hedges  
209-575,  
137-576  
1.0 Ac.

Basell Stores, Inc.  
OR105-301  
2.40 Ac.

1.44 Ac.  
(CT)

BEF REIT, Inc.  
OR71-251  
Tot. 1.737 Ac.

Merle & Margaret  
Primmer  
Tot. Sec. 88.41 Ac.  
OR61 - 636  
10.95 Ac.

Carl Risch  
160-644, 213-535  
3.90 Ac.

# SEC. 10