

4-5-00

# HOCKING COUNTY

Sec. 16 T 14 R 17

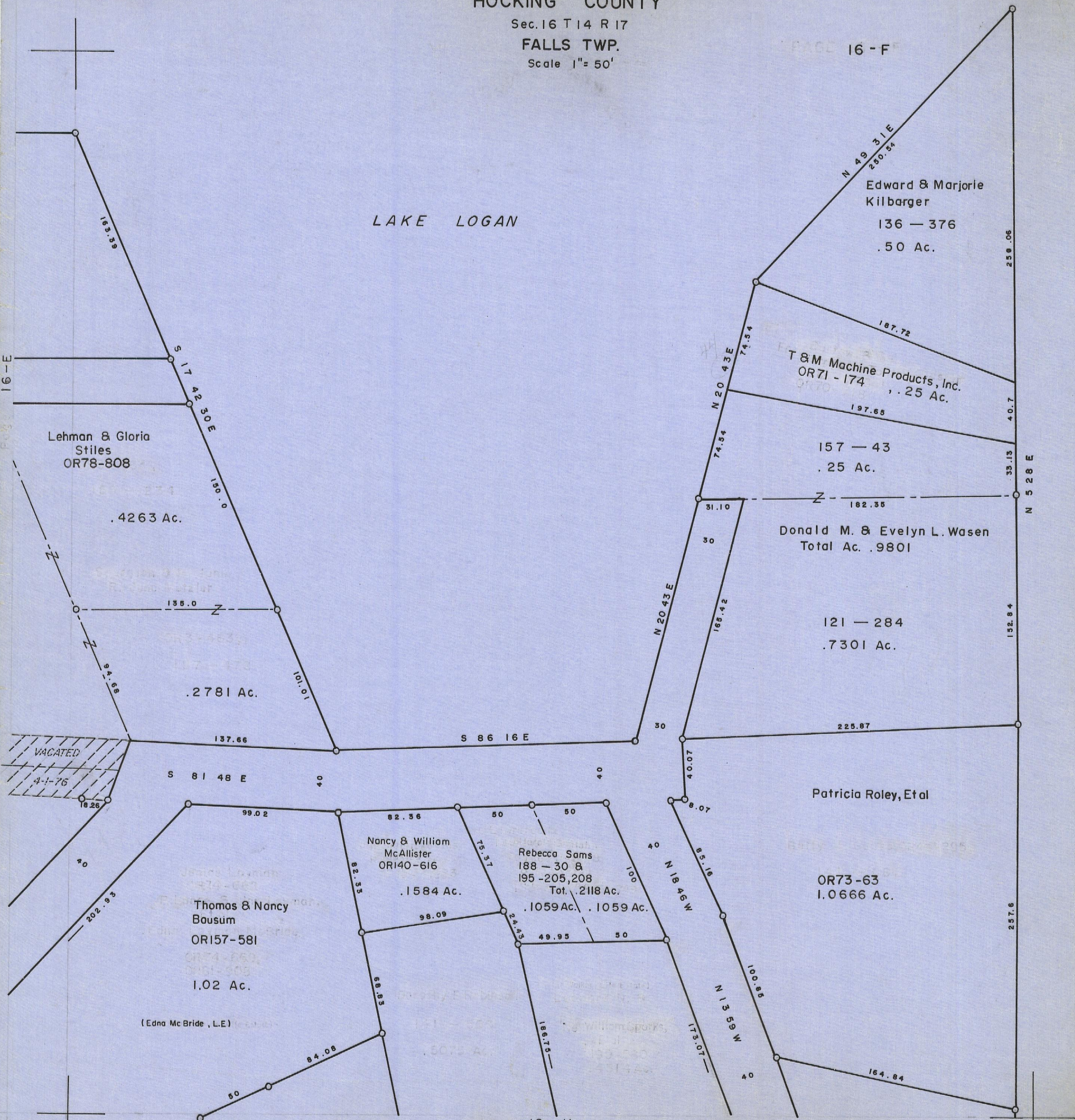
FALLS TWP.

Scale 1" = 50'

PAGE 16 - F

## LAKE LOGAN

16-E



Lehman & Gloria  
Stiles  
OR78-808

.4263 Ac.

155.0

.2781 Ac.

137.66

S 81 48 E

99.02

Nancy & William  
McAllister  
OR140-616

.1584 Ac.

Thomas & Nancy  
Bousum  
OR157-581

1.02 Ac.

(Edna McBride, L.E.)

84.08

50

82.36

92.55

98.09

68.85

Rebecca Sams  
188 - 30 &  
195 - 205, 208  
Tot. .2118 Ac.

.1059 Ac. .1059 Ac.

49.95

24.43

50

186.15

50

173.07

40

100

85.16

N 18 46 W

40

100.66

164.84

40

173.07

40

100.66

164.84

40

173.07

40

100.66

164.84

40

173.07

40

100.66

164.84

40

173.07

40

100.66

164.84

40

173.07

40

100.66

164.84

40

173.07

40

100.66

164.84

40

173.07

40

100.66

164.84

40

173.07

40

100.66

164.84

40

173.07

40

100.66

164.84

40

173.07

40

100.66

164.84

40

173.07

40

100.66

164.84

40

173.07

40

100.66

164.84

40

173.07

40

100.66

164.84

40

173.07

40

100.66

164.84

40

173.07

40

100.66

164.84

40

173.07

40

100.66

164.84

40

173.07

40

100.66

164.84

40

173.07

40

100.66

164.84

40

173.07

40

100.66

164.84

40

173.07

40

100.66

164.84

40

173.07

40

100.66

164.84

40

173.07

40

100.66

164.84

40

173.07

40

100.66

164.84

40

173.07

40

100.66

164.84

40

173.07

40

100.66

164.84

40

173.07

40

100.66

164.84

40

173.07

40

100.66

164.84

40

173.07

40

100.66

164.84

40

173.07

40

100.66

164.84

40

173.07

40

100.66

164.84

40

173.07

40

100.66

164.84

40

173.07

40

100.66

164.84

40

173.07

40

100.66

164.84

40

173.07

40

100.66

164.84

40

173.07

40

100.66

164.84

40

173.07

40

100.66

164.84

40

173.07

40

100.66

164.84

40

173.07

40

100.66

164.84

40

173.07

40

100.66

164.84

40

173.07

40

100.66

164.84

40

173.07

40

100.66

164.84

40

173.07

40

100.66

164.84

40

173.07

40

100.66

164.84

40

173.07

40

100.66

164.84

40

173.07

40

100.66

164.84

40

173.07

40

100.66

164.84

40

173.07

40

100.66

164.84

40

173.07

40

100.66

164.84

40

173.07

40

100.66

164.84

40

173.07

40

100.66

164.84

40

173.07

40

100.66

164.84

40

173.07

40

100.66

164.84

40

173.07