

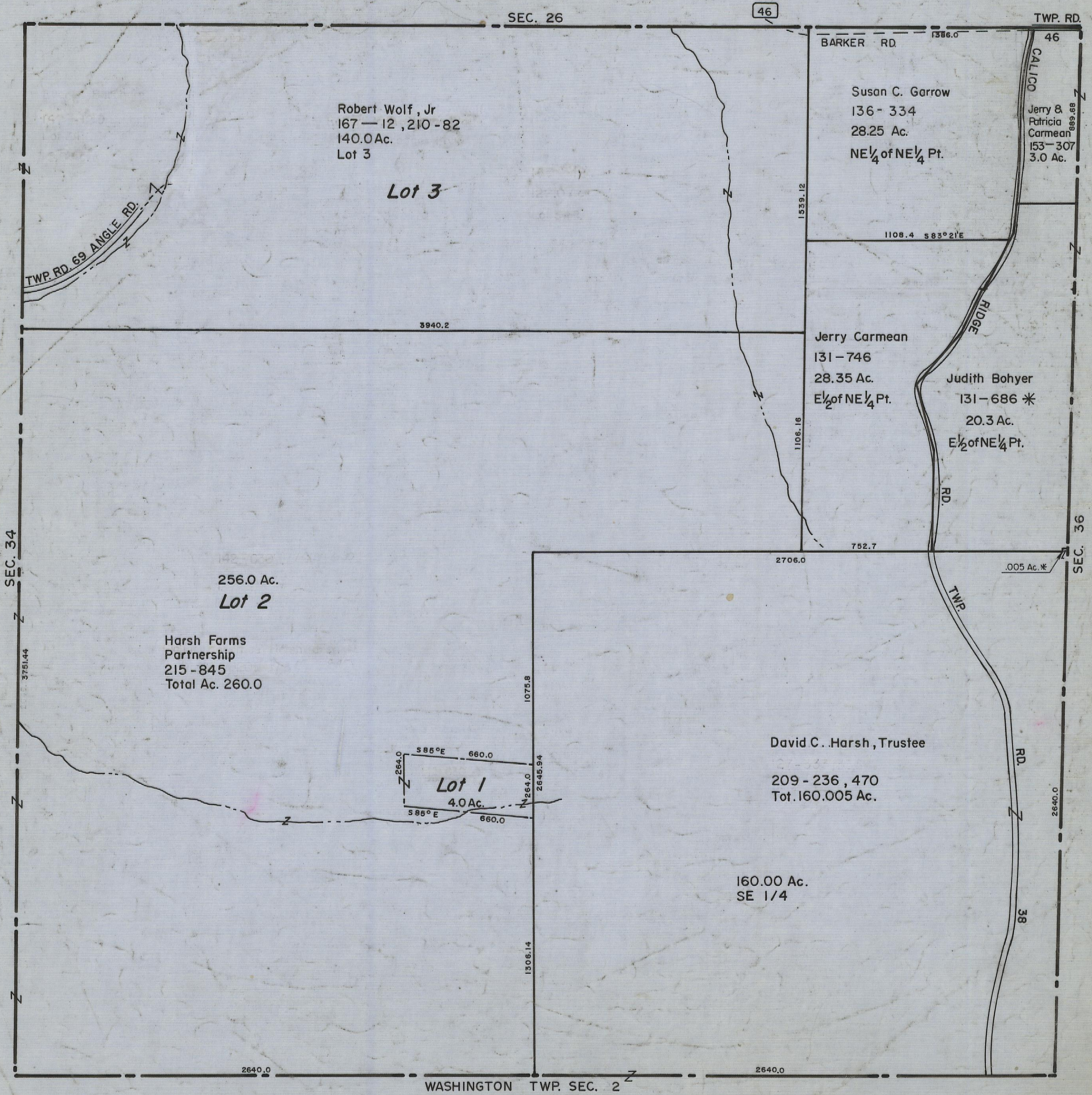
4-5-00

HOCKING COUNTY

Sec. 35 T14 R17

FALLS TWP.

Scale 1"=400'



Robert Wolf, Jr
 167 — 12,210-82
 140.0 Ac.
 Lot 3

Lot 3

Susan C. Garrow
 136 - 334
 28.25 Ac.
 NE 1/4 of NE 1/4 Pt.

Jerry &
 Patricia
 Carmean
 153 - 307
 3.0 Ac.

Jerry Carmean
 131 - 746
 28.35 Ac.
 E 1/2 of NE 1/4 Pt.

Judith Bohyer
 131 - 686 *
 20.3 Ac.
 E 1/2 of NE 1/4 Pt.

256.0 Ac.
Lot 2
 Harsh Farms
 Partnership
 215 - 845
 Total Ac. 260.0

Lot 1
 4.0 Ac.

David C. Harsh, Trustee
 209 - 236, 470
 Tot. 160.005 Ac.

160.00 Ac.
 SE 1/4

SEC. 35