

4-5-00

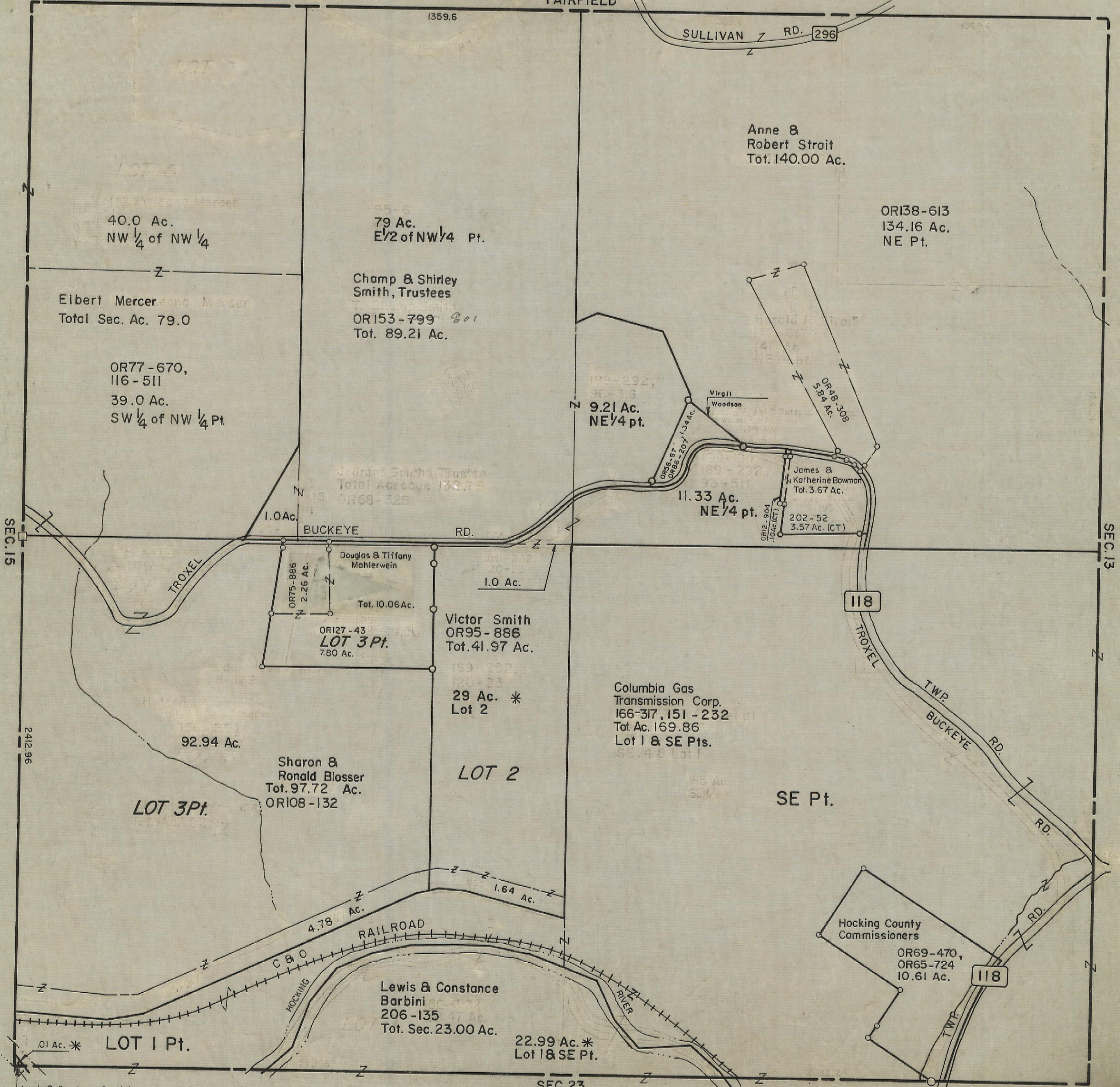
HOCKING COUNTY

Sec 14 T 13 R 18

GOOD HOPE TWP.

Scale: 1" = 400'

FAIRFIELD



SEC. 15

SEC. 13

SEC. 23

SEC. 14

Lewis & Constance Barbini
206-135, Tot. Sec. 23.00 Ac.

LOT 1 Pt.

Lewis & Constance Barbini
206-135
Tot. Sec. 23.00 Ac.

22.99 Ac. *
Lot 1 & SE Pt.

LOT 2

29 Ac. *
Lot 2

Victor Smith
OR95-886
Tot. 41.97 Ac.

ORI27-43
LOT 3 Pt.
7.80 Ac.

Sharon & Ronald Blosser
Tot. 97.72 Ac.
ORI08-132

92.94 Ac.

LOT 3 Pt.

Douglas & Tiffany Mahlerwein
Tot. 10.06 Ac.

OR75-886
2.26 Ac.

1.0 Ac.

BUCKEYE RD.

11.33 Ac.
NE 1/4 pt.

James B. Katherine Bowman
Tot. 3.67 Ac.

202-52
3.57 Ac. (CT)

9.21 Ac.
NE 1/4 pt.

Virgil Woodson

OR48-308
5.84 Ac.

Anne & Robert Strait
Tot. 140.00 Ac.

ORI38-613
134.16 Ac.
NE Pt.

79 Ac.
E 1/2 of NW 1/4 Pt.

Champ & Shirley Smith, Trustees

ORI53-799
Tot. 89.21 Ac.

40.0 Ac.
NW 1/4 of NW 1/4

Elbert Mercer
Total Sec. Ac. 79.0

OR77-670,
116-511
39.0 Ac.
SW 1/4 of NW 1/4 Pt.

SULLIVAN RD. 296

118

118

Hocking County Commissioners
OR69-470,
OR65-724
10.61 Ac.

SE Pt.

Columbia Gas Transmission Corp.
166-317, 151-232
Tot. Ac. 169.86
Lot 1 & SE Pts.