

4-5-00

HOCKING COUNTY

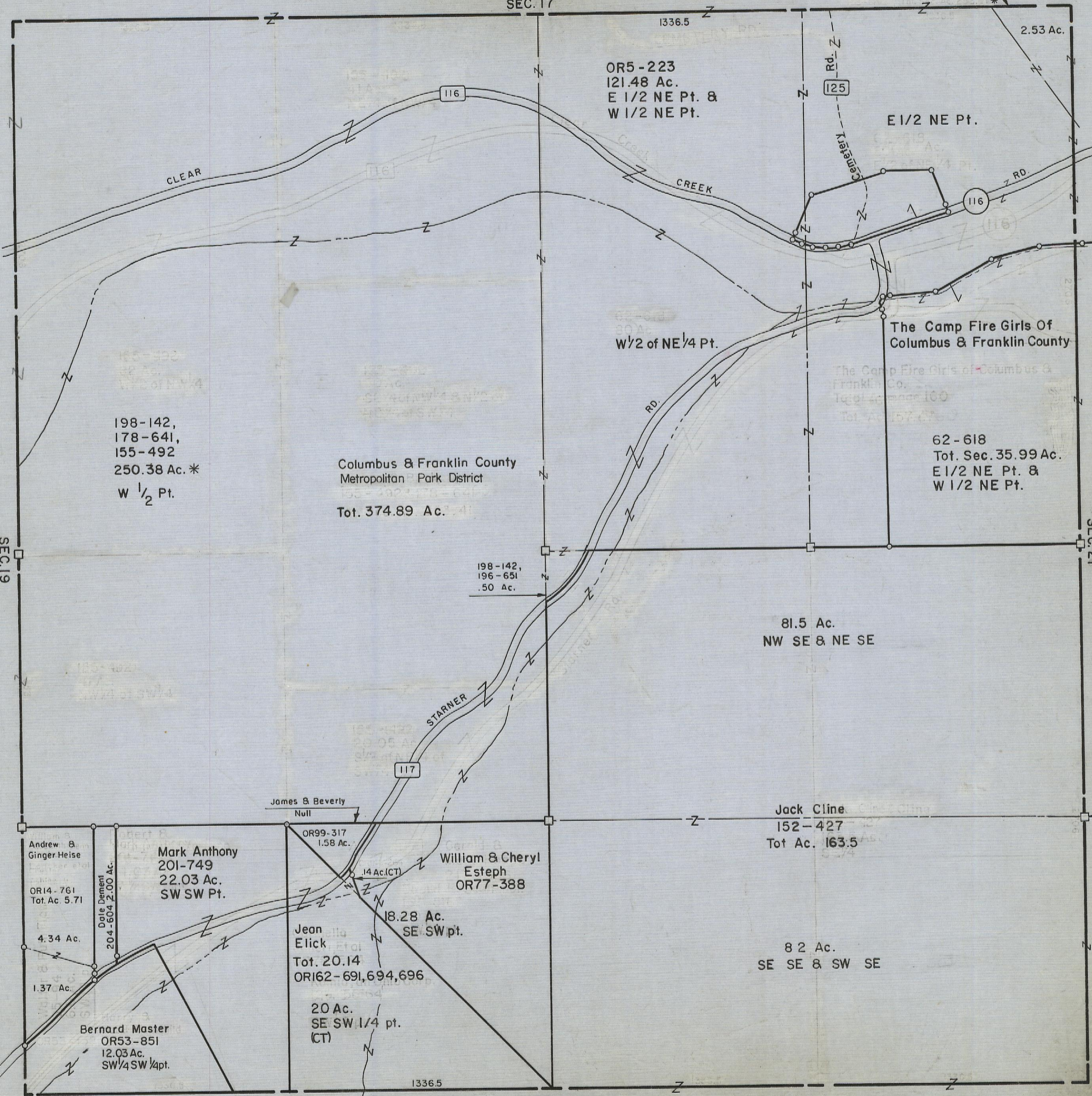
SEC. 20 T13 R18

GOOD HOPE TWP

Scale: 1" = 400'

178-641,
155-492, 198-142

SEC. 17



OR5-223
121.48 Ac.
E 1/2 NE Pt. &
W 1/2 NE Pt.

E 1/2 NE Pt.

198-142,
178-641,
155-492
250.38 Ac. *
W 1/2 Pt.

Columbus & Franklin County
Metropolitan Park District
Tot. 374.89 Ac.

The Camp Fire Girls Of
Columbus & Franklin County

62-618
Tot. Sec. 35.99 Ac.
E 1/2 NE Pt. &
W 1/2 NE Pt.

198-142,
196-651
.50 Ac.

81.5 Ac.
NW SE & NE SE

Jack Cline
152-427
Tot. Ac. 163.5

82 Ac.
SE SE & SW SE

Andrew & Ginger Heise
OR14-761
Tot. Ac. 5.71

Mark Anthony
201-749
22.03 Ac.
SW SW Pt.

OR99-317
1.58 Ac.

William & Cheryl Esteph
OR77-388

Jean Elick
Tot. 20.14
OR162-691, 694, 696

20 Ac.
SE SW 1/4 pt.
(CT)

Bernard Master
OR53-851
12.03 Ac.
SW 1/4 SW 1/4 pt.

SEC. 20