

4-5-00

HOCKING COUNTY

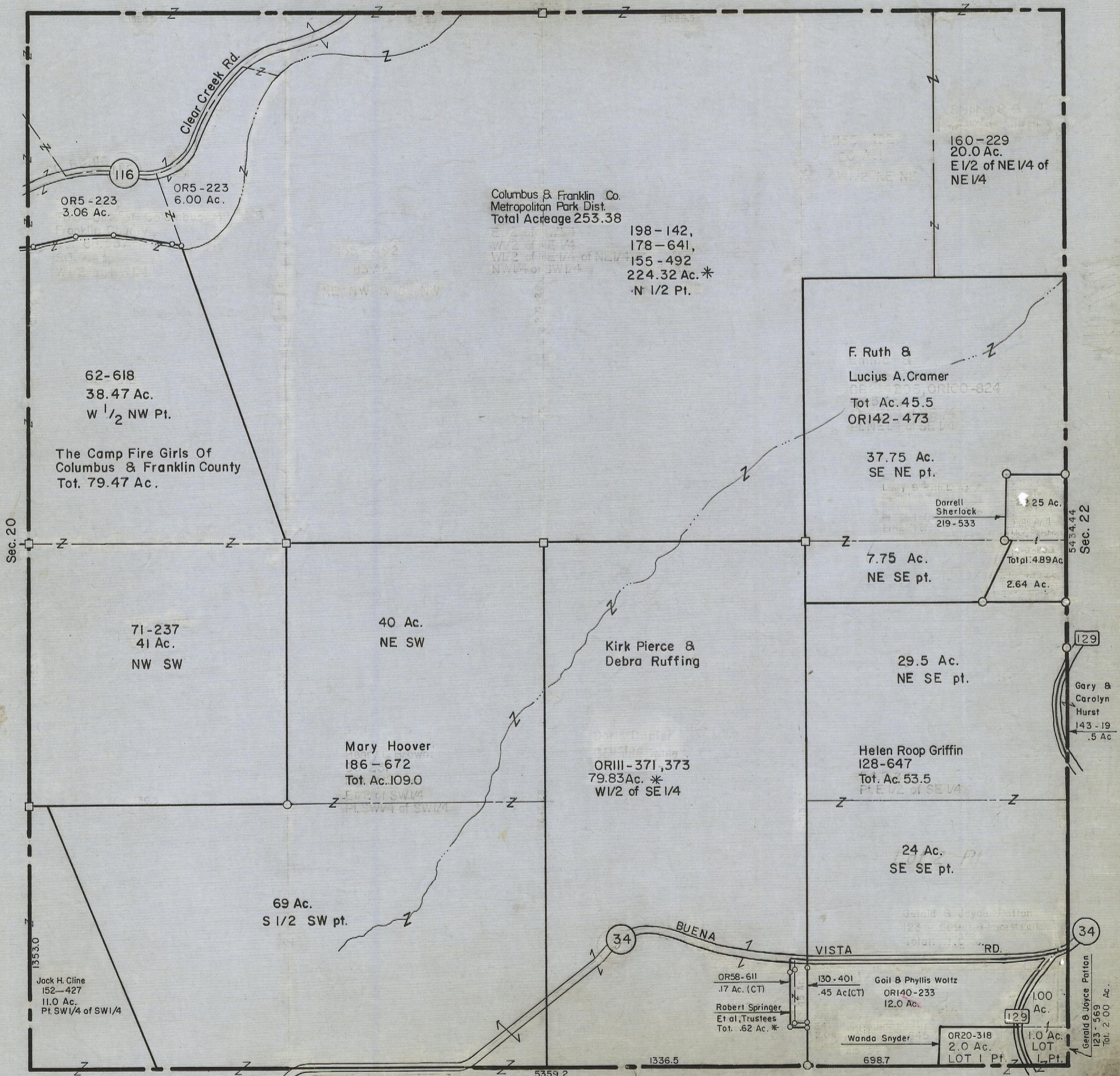
Sec. 21 T13 R18

GOOD HOPE TWP.

Scale=1"=400'

Page 9

Sec. 16



OR5-223
3.06 Ac.

OR5-223
6.00 Ac.

Columbus & Franklin Co.
Metropolitan Park Dist.
Total Acreage 253.38

198-142,
178-641,
155-492
224.32 Ac.*
N 1/2 Pt.

160-229
20.0 Ac.
E 1/2 of NE 1/4 of
NE 1/4

62-618
38.47 Ac.
W 1/2 NW Pt.

The Camp Fire Girls Of
Columbus & Franklin County
Tot. 79.47 Ac.

F. Ruth &
Lucius A. Cramer
Tot. Ac. 45.5
OR142-473

37.75 Ac.
SE NE pt.

Darrell
Sherlock
219-533

2.25 Ac.

7.75 Ac.
NE SE pt.

Total: 4.89 Ac.

2.64 Ac.

71-237
41 Ac.
NW SW

40 Ac.
NE SW

Kirk Pierce &
Debra Ruffing

Mary Hoover
186-672
Tot. Ac. 109.0

OR111-371,373
79.83 Ac.*
W 1/2 of SE 1/4

29.5 Ac.
NE SE pt.

Helen Roop Griffin
128-647
Tot. Ac. 53.5
E 1/2 of SE 1/4

24 Ac.
SE SE pt.

69 Ac.
S 1/2 SW pt.

Jack H. Cline
152-427
11.0 Ac.
Pt. SW 1/4 of SW 1/4

OR58-611
.17 Ac. (CT)
Robert Springer
Et al, Trustees
Tot. .62 Ac.*

130-401
.45 Ac (CT)
Gail & Phyllis Woltz
OR140-233
12.0 Ac.

Wanda Snyder
OR20-318
2.0 Ac.
LOT 1 Pt.

1.00 Ac.
LOT 1 Pt.

Gerald & Joyce Patton
123-569
Tot. 2.00 Ac.

Sec. 21