

4-5-00

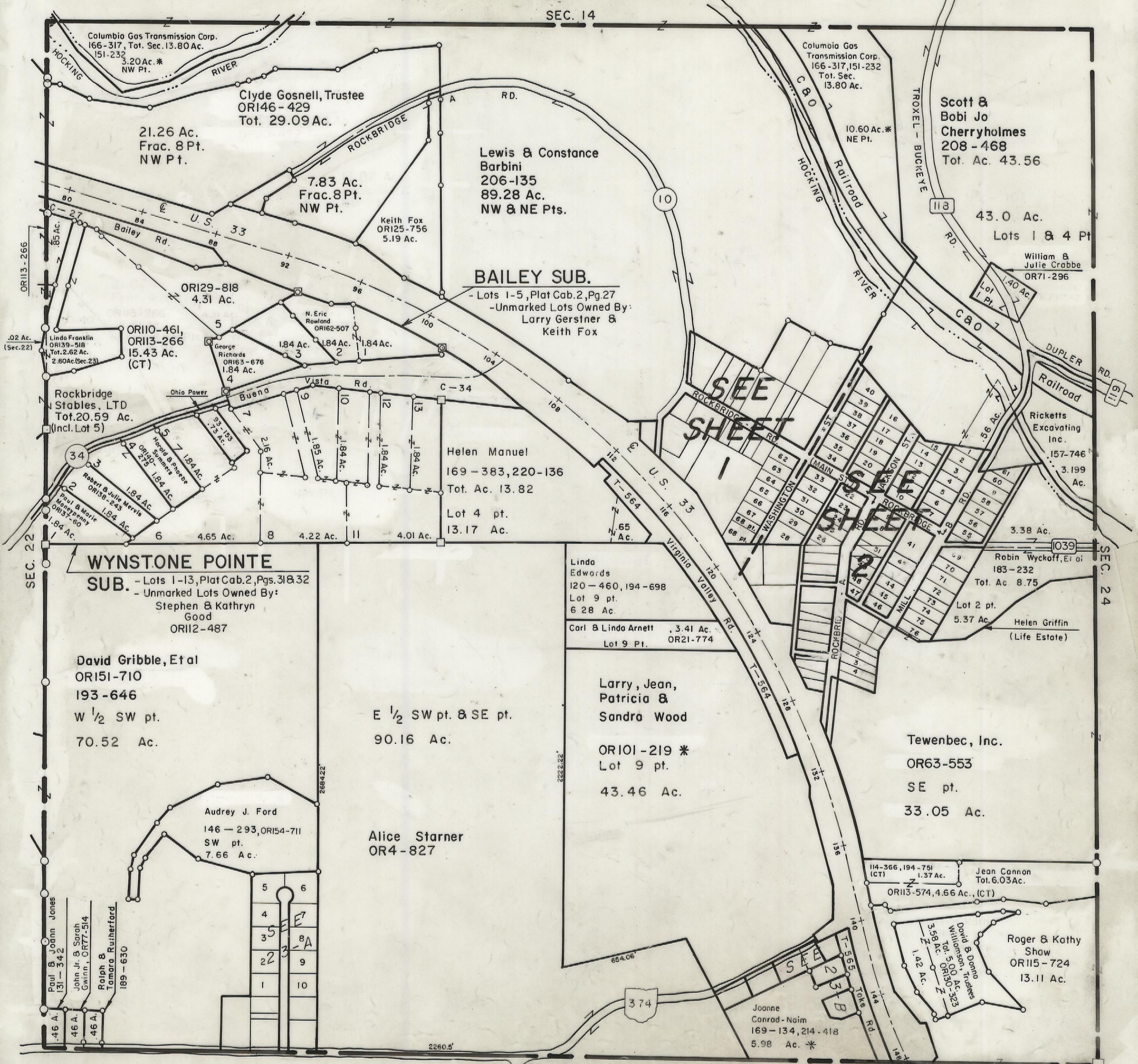
HOCKING COUNTY

GOOD HOPE

SEC. 23 T 13 R 18

Scale 1" = 400'

SEC. 14



Columbia Gas Transmission Corp.
166-317, Tot. Sec. 13.80 Ac.
151-232
3.20 Ac. *
NW Pt.

Clyde Gosnell, Trustee
ORI46-429
Tot. 29.09 Ac.

21.26 Ac.
Frac. 8 Pt.
NW Pt.

7.83 Ac.
Frac. 8 Pt.
NW Pt.

Lewis & Constance
Barbini
206-135
89.28 Ac.
NW & NE Pts.

Keith Fox
ORI25-756
5.19 Ac.

Columbia Gas
Transmission Corp.
166-317, 151-232
Tot. Sec.
13.80 Ac.

10.60 Ac. *
NE Pt.

Scott &
Bobi Jo
Cherryholmes
208-468
Tot. Ac. 43.56

43.0 Ac.
Lots 1 & 4 Pt

William &
Julie Crabbe
OR71-296

BAILEY SUB.

- Lots 1-5, Plat Cab. 2, Pg. 27
- Unmarked Lots Owned By:
Larry Gerstner &
Keith Fox

ORI29-818
4.31 Ac.

OR110-461,
OR113-266
15.43 Ac.
(CT)

Linda Franklin
ORI39-518
Tot. 2.62 Ac.
2.60 Ac. (Sec. 23)

George
Richards
ORI63-676
1.84 Ac.

N. Eric
Rowland
ORI62-507
1.84 Ac.

1.84 Ac.

1.84 Ac.

Rockbridge
Stables, LTD
Tot. 20.59 Ac.
(Incl. Lot 5)

Ohio Power

Buena

Vista Rd

C-34

Helen Manuel
169-383, 220-136
Tot. Ac. 13.82

Lot 4 pt.
13.17 Ac.

SEE
SHEET
1

SEE
SHEET
2

SEE
SHEET
3

Ricketts
Excavating
Inc.
157-746
3.199
Ac.

WYNSTONE POINTE

SUB. - Lots 1-13, Plat Cab. 2, Pgs. 31 & 32
- Unmarked Lots Owned By:
Stephen & Kathryn
Good
ORI12-487

David Gribble, Et al
ORI51-710
193-646
W 1/2 SW pt.
70.52 Ac.

E 1/2 SW pt. & SE pt.
90.16 Ac.

Alice Starner
OR4-827

Audrey J. Ford
146-293, ORI54-711
SW pt.
7.66 Ac.

Linda
Edwards
120-460, 194-698
Lot 9 pt.
6.28 Ac.

Carl & Linda Arnett
3.41 Ac.
Lot 9 Pt. OR21-774

Larry, Jean,
Patricia &
Sandra Wood

OR101-219 *
Lot 9 pt.
43.46 Ac.

Tewenbec, Inc.
OR63-553
SE pt.
33.05 Ac.

Robin Wyckoff, Et al
183-232
Tot. Ac. 8.75

Lot 2 pt.
5.37 Ac.
Helen Griffin
(Life Estate)

114-366, 194-751
(CT) 1.37 Ac.
Jean Cannon
Tot. 6.03 Ac.
ORI13-574, 4.66 Ac., (CT)

Roger & Kathy
Show
ORI15-724
13.11 Ac.

Joanne
Conrad-Naim
169-134, 214-418
5.98 Ac. *

SEC. 26

SEC. 23