

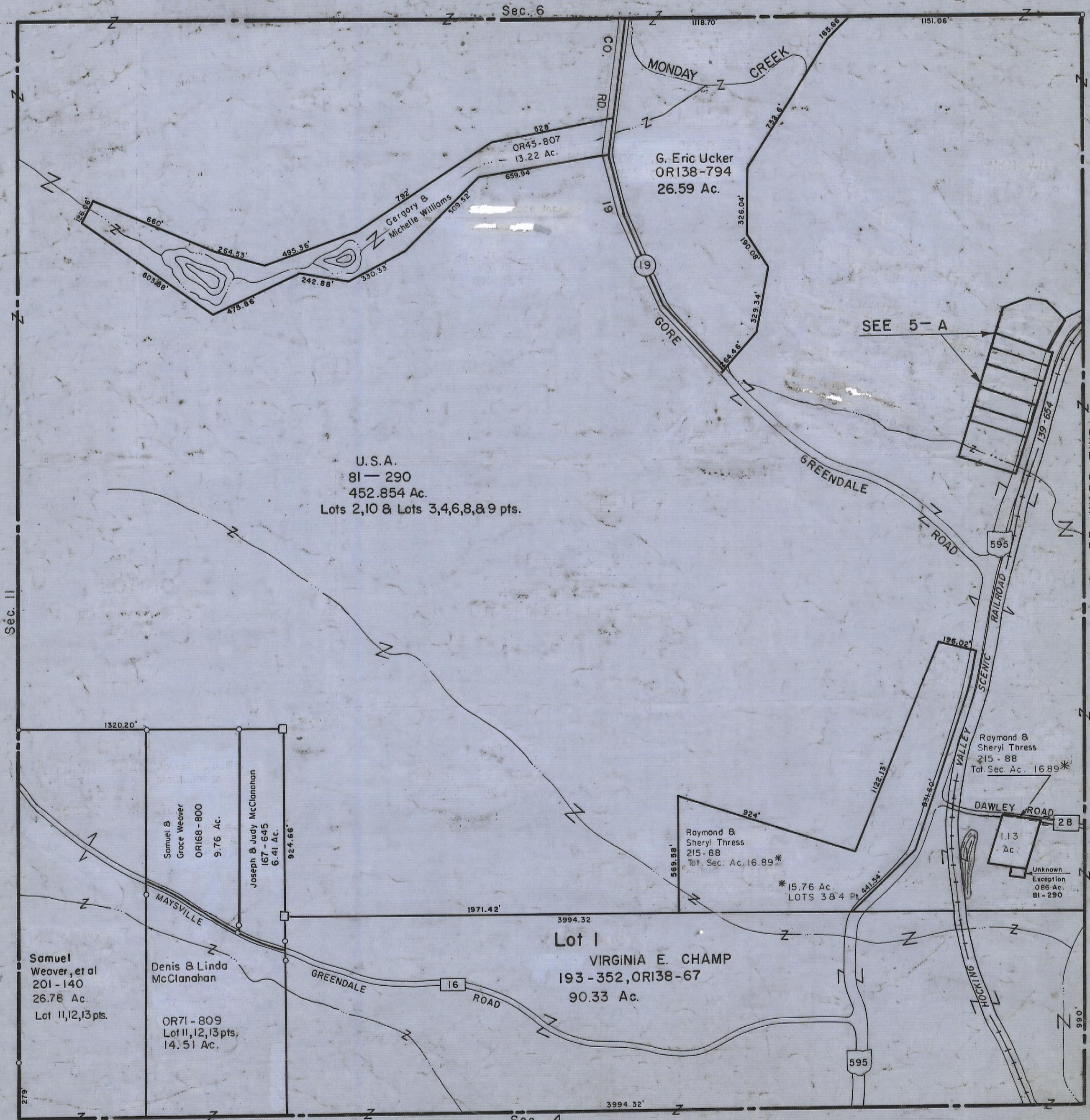
5-12-88

HOCKING COUNTY

Sec. 5 T13. R16

GREEN TWP.

Scale 1"=400'



U.S.A.
81 - 290
452.854 Ac.
Lots 2,10 & Lots 3,4,6,8,8,9 pts.

G. Eric Ucker
OR138-794
26.59 Ac.

Gergory & Michelle Williams
509.52

OR45-807
13.22 Ac.

Raymond & Sheryl Thress
215-88
Tot. Sec. Ac. 16.89*

Raymond & Sheryl Thress
215-88
Tot. Sec. Ac. 16.89*

*15.76 Ac.
LOTS 3 & 4 Pt.

1.13 Ac.

Unknown Exception
.086 Ac.
81-290

Samuel & Grace Weaver
OR168-800
9.76 Ac.

Joseph & Judy McClanahan
167-645
6.41 Ac.

Samuel Weaver, et al
201-140
26.78 Ac.
Lot 11,12,13 pts.

Denis & Linda McClanahan
OR71-809
Lot 11,12,13 pts.
14.51 Ac.

Lot 1
VIRGINIA E. CHAMP
193-352, OR138-67
90.33 Ac.

Sec. 5

Sec. 35 WARD TWP

Sec. 11

Sec. 6

Sec. 4