

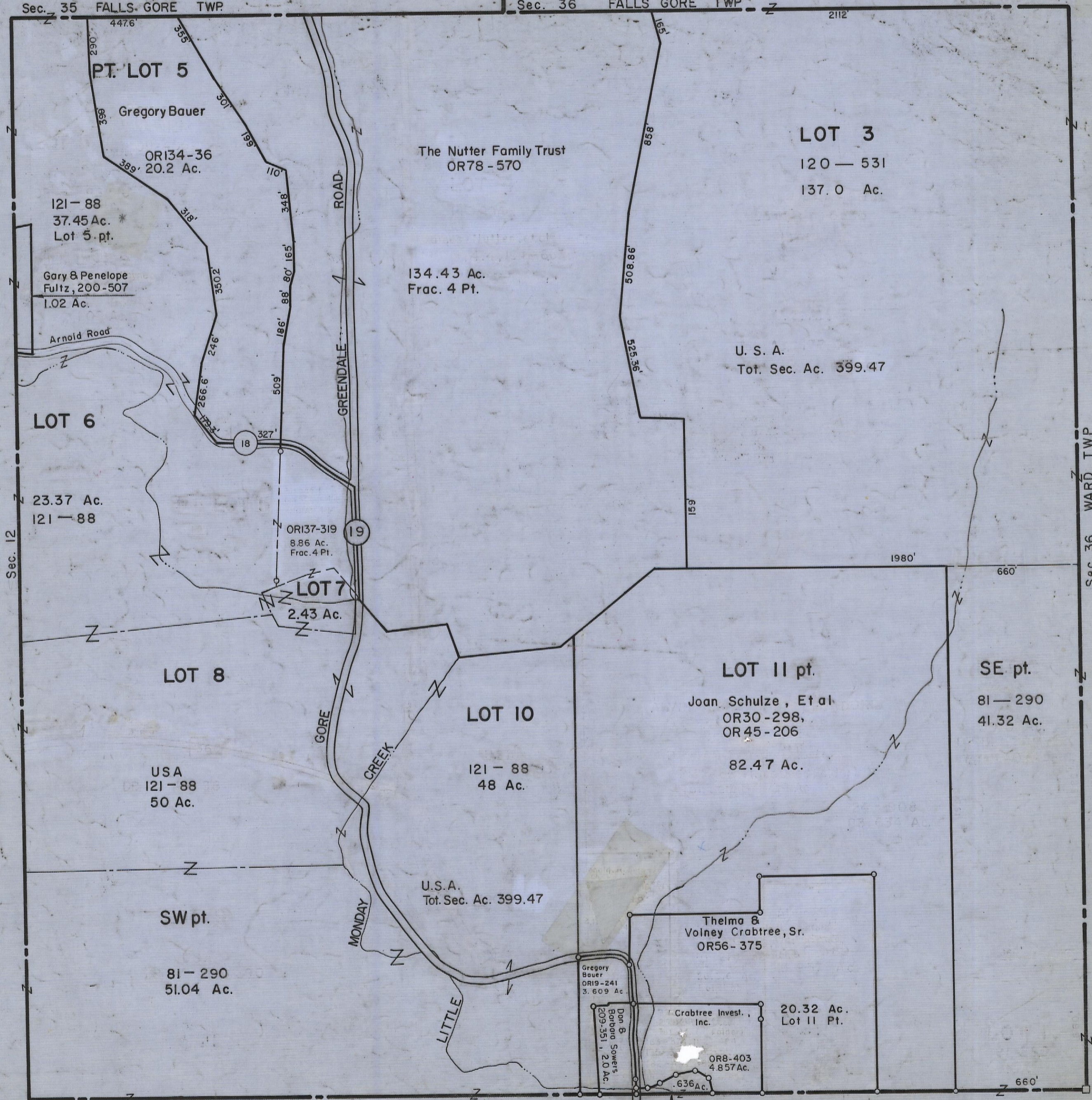
HOCKING COUNTY

Sec. 6 T13 R16

GREEN TWP.
Scale 1" = 400'

Sec. 35 FALLS GORE TWP

Sec. 36 FALLS GORE TWP



PT. LOT 5

Gregory Bauer

ORI34-36
20.2 Ac.

121-88
37.45 Ac. *
Lot 5 pt.

Gary & Penelope
Fultz, 200-507
1.02 Ac.

Arnold Road

LOT 6

23.37 Ac.
121-88

ORI37-319
8.86 Ac.
Frac. 4 Pt.

LOT 7

2.43 Ac.

LOT 8

USA
121-88
50 Ac.

SW pt.

81-290
51.04 Ac.

The Nutter Family Trust
OR78-570

134.43 Ac.
Frac. 4 Pt.

GREENDALE ROAD

GORE CREEK

MONDAY CREEK

LITTLE CREEK

LOT 10

121-88
48 Ac.

U.S.A.
Tot. Sec. Ac. 399.47

LOT 3

120-531
137.0 Ac.

U. S. A.
Tot. Sec. Ac. 399.47

LOT 11 pt.

Joan Schulze, Et al
OR30-298,
OR45-206

82.47 Ac.

SE pt.

81-290
41.32 Ac.

Gregory Bauer
ORI9-241
3.609 Ac.

Don B.
Barbara Sowers
209-351, 2.0 Ac.

Thelma &
Volney Crabtree, Sr.
OR56-375

Crabtree Invest.,
Inc. 20.32 Ac.
Lot 11 Pt.

OR8-403
4.857 Ac.

G. Eric Ucker
ORI38-794

SEC. 6

Sec. 5

Sec. 36 WARD TWP