

5-12-00

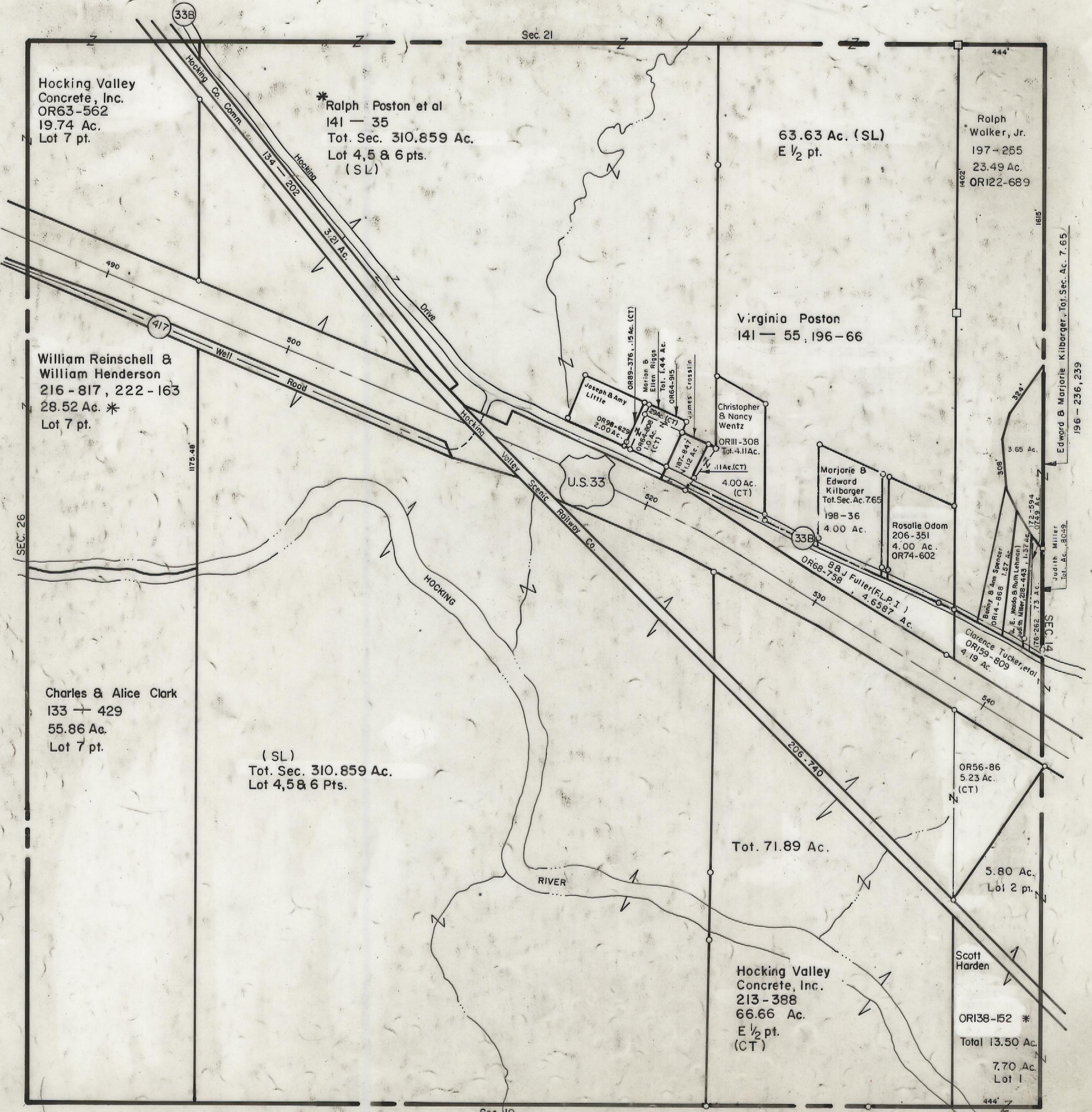
HOCKING COUNTY

GREEN TWP

SEC. 20 T13 R16

Scale 1" = 400'

(20)



Hocking Valley
Concrete, Inc.
OR63-562
19.74 Ac.
Lot 7 pt.

*Ralph Poston et al
141 - 35
Tot. Sec. 310.859 Ac.
Lot 4, 5 & 6 pts.
(SL)

63.63 Ac. (SL)
E 1/2 pt.

Ralph
Walker, Jr.
197 - 255
23.49 Ac.
OR122-689

William Reinschell &
William Henderson
216 - 817, 222 - 163
28.52 Ac. *
Lot 7 pt.

Virginia Poston
141 - 55, 196 - 66

U.S. 33

Charles & Alice Clark
133 - 429
55.86 Ac.
Lot 7 pt.

(SL)
Tot. Sec. 310.859 Ac.
Lot 4, 5 & 6 Pts.

Tot. 71.89 Ac.

Hocking Valley
Concrete, Inc.
213 - 388
66.66 Ac.
E 1/2 pt.
(CT)

OR56-86
5.23 Ac.
(CT)

Scott
Harden

OR138-152 *
Total 13.50 Ac.
7.70 Ac.
Lot 1

SEC. 20