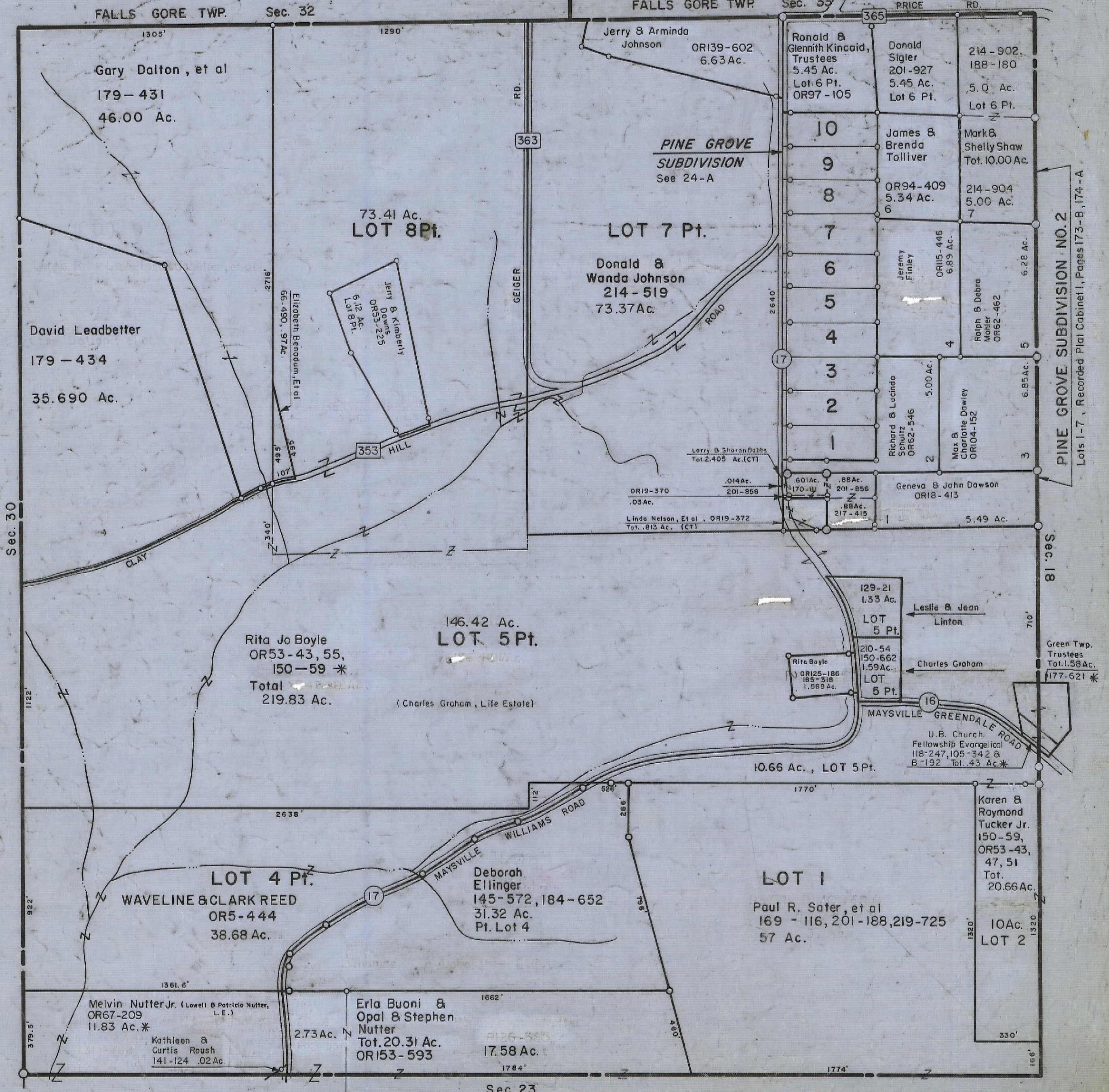


5-12-00

HOCKING COUNTY

Sec. 24 T13 R16

GREEN TWP
Scale 1" = 400'



PINE GROVE SUBDIVISION NO. 2
Lots 1-7, Recorded Plat Cabinet 1, Pages 173-B, 174-A

Green Twp. Trustees
Tot. 1.58 Ac.
177-621 *

SEC. 24