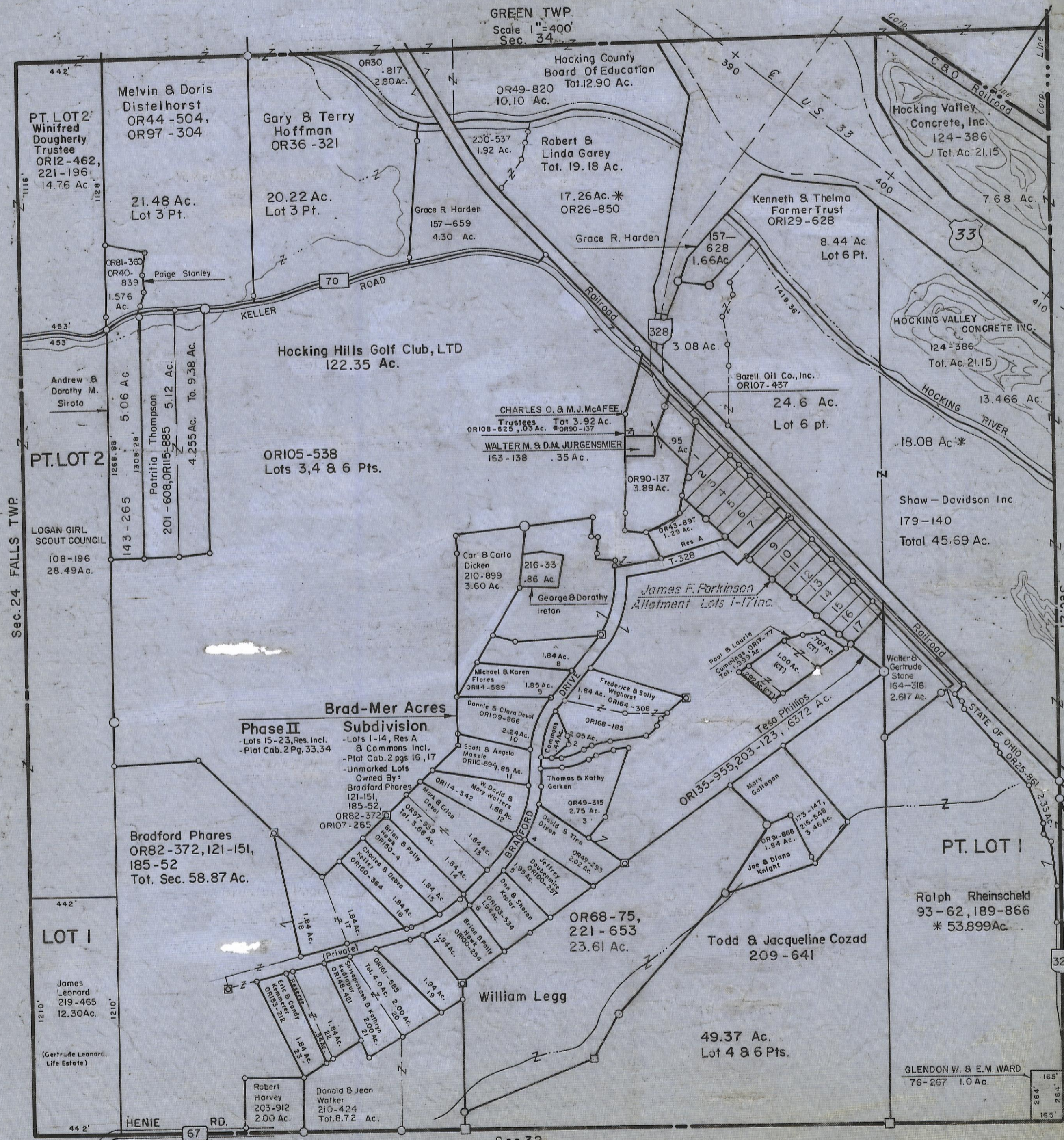


HOCKING COUNTY

Sec. 33 T13 R16

GREEN TWP.  
Scale 1"=400'  
Sec. 34



Sec. 24 FALLS TWP.

Sec. 27

PT. LOT 2  
Winifred Dougherty Trustee  
OR12-462, 221-196  
14.76 Ac.

Melvin & Doris Distelhorst  
OR44-504, OR97-304  
21.48 Ac. Lot 3 Pt.

Gary & Terry Hoffman  
OR36-321  
20.22 Ac. Lot 3 Pt.

Hocking County Board Of Education  
OR49-820  
10.10 Ac.

Robert & Linda Garey  
Tot. 19.18 Ac.

Kenneth & Thelma Farmer Trust  
OR129-628  
8.44 Ac. Lot 6 Pt.

Hocking Valley Concrete, Inc.  
124-386  
Tot. Ac. 21.15

Hocking Hills Golf Club, LTD  
122.35 Ac.

HOCKING VALLEY CONCRETE INC.  
124-386  
Tot. Ac. 21.15

PT. LOT 2

Andrew & Dorothy M. Siroto  
5.06 Ac.

Patricia Thompson  
201-608, OR115-885  
5.12 Ac.

OR105-538  
Lots 3, 4 & 6 Pts.

CHARLES O. & M.J. McAFEE, Trustees  
Tot. 3.92 Ac.  
OR108-625, .05 Ac. \*OR90-137

WALTER M. & D.M. JURGENSMIER  
163-138 .35 Ac.

Bazell Oil Co., Inc.  
OR107-437  
24.6 Ac. Lot 6 pt.

Shaw-Davidson Inc.  
179-140  
Total 45.69 Ac.

LOGAN GIRL SCOUT COUNCIL  
108-196  
28.49 Ac.

Carl & Carlo Dicken  
210-899  
3.60 Ac.

James F. Parkinson  
Allotment Lots 1-17 Inc.

George & Dorothy Ireton  
1.84 Ac. 8

Michael & Karen Flores  
OR114-589  
1.85 Ac. 9

Frederick & Sally Weghorst  
OR164-308  
1.84 Ac. 1

Dannie & Clara Deval  
OR109-866  
2.24 Ac. 10

Thomas & Kathy Gerken  
OR49-315  
2.75 Ac. 3

Scott & Angela Mause  
OR110-594, 85 Ac. 11

W. David & Mary Walters  
OR114-342  
1.86 Ac. 12

Mark & Erica Deval  
OR97-939  
Tot. 5.68 Ac.

Brian & Polly Deval  
OR150-4  
1.84 Ac. 13

Charles & Debra Ketter  
OR150-364  
1.84 Ac. 14

Brian & Polly Deval  
OR150-421  
1.84 Ac. 15

Don & Sharon Ketter  
OR103-534  
1.94 Ac. 16

Brian & Polly Deval  
OR100-254  
1.94 Ac. 17

Bradford Phares  
OR82-372, 121-151, 185-52  
Tot. Sec. 58.87 Ac.

Phase II Subdivision  
-Lots 15-23, Res. Incl.  
-Plat Cab. 2 Pg. 33, 34

Brad-Mer Acres  
-Lots 1-14, Res A & Commons Incl.  
-Plat Cab. 2 pgs 16, 17  
-Unmarked Lots Owned By:

Bradford Phares  
121-151, 185-52, OR82-372  
OR107-265

Mark & Erica Deval  
OR97-939  
Tot. 5.68 Ac.

Brian & Polly Deval  
OR150-4  
1.84 Ac. 13

Charles & Debra Ketter  
OR150-364  
1.84 Ac. 14

Brian & Polly Deval  
OR150-421  
1.84 Ac. 15

Don & Sharon Ketter  
OR103-534  
1.94 Ac. 16

Brian & Polly Deval  
OR100-254  
1.94 Ac. 17

Private  
OR161-585  
Tot. 4.0 Ac. 2.00 Ac.

Sylvan & B. Kuhny  
OR148-421  
Tot. 2.25 Ac.

Robert Harvey  
203-912  
2.00 Ac.

Donald & Jean Walker  
210-424  
Tot. 8.72 Ac.

William Legg  
49.37 Ac. Lot 4 & 6 Pts.

OR68-75, 221-653  
23.61 Ac.

Todd & Jacqueline Cozad  
209-641

PT. LOT 1

Ralph Rheinscheld  
93-62, 189-866  
\* 53.899 Ac.

GLENDON W. & E.M. WARD  
76-267 1.0 Ac.

SEC. 33